
The update illustration for S100

Upgrading step:

1. Copy the folders to the SD card (FAT 32) :

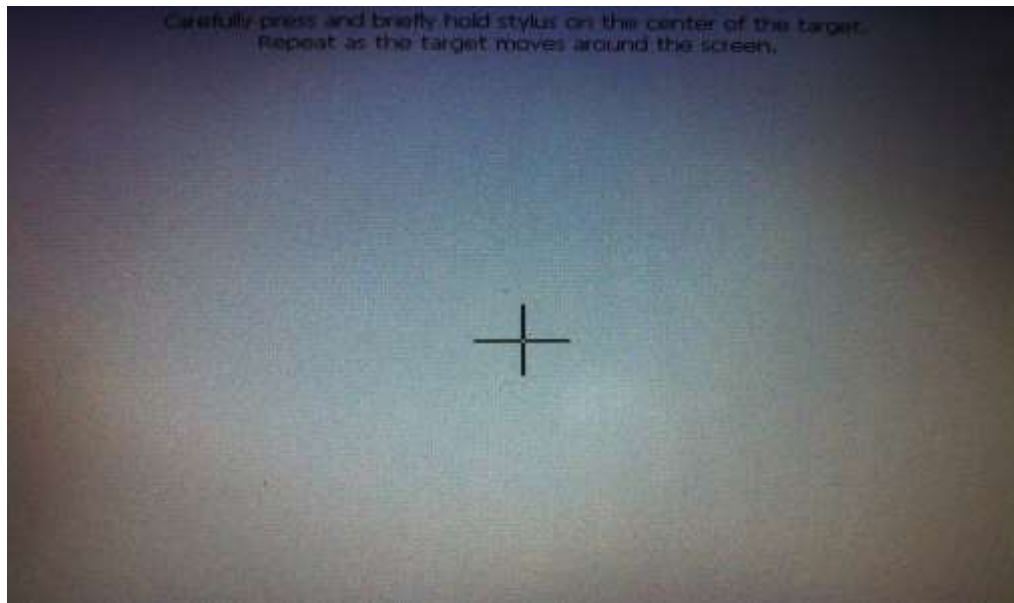


2. Begin to update:

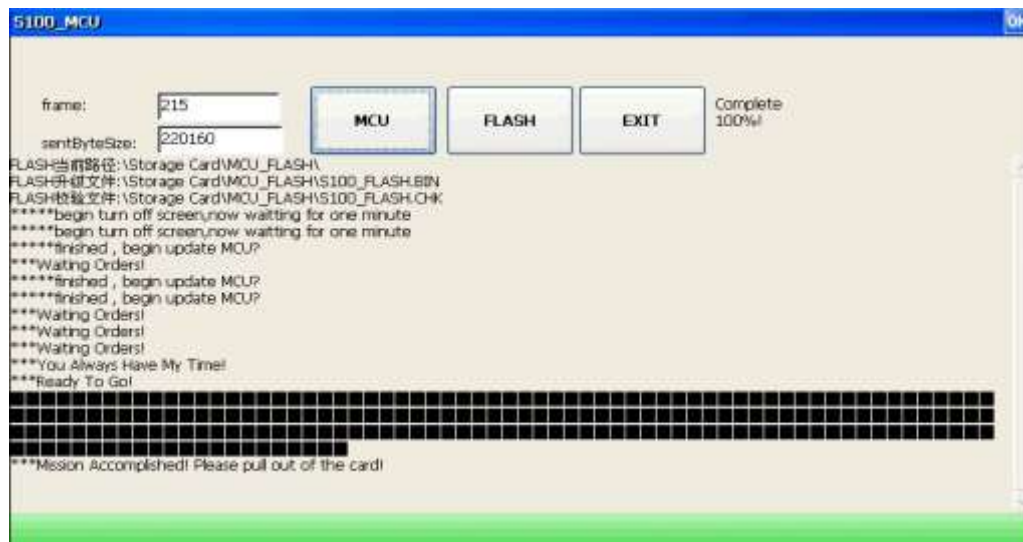
- 1).before upgrade the program,please switchover the interface to the bluetooth (**BT**) interface(you can upgrade all the program by this way),and turn off the host;
- 2).put the SD card to the GPS rabbit,and restart the machine,then you can upgrade the program:
- 3).upgrade Eboot.NK;

```
Bootloader Version 1.0
Into auto update mode ...
Load BOOTIMAGE file from SD car ...
Load BOOTIMAGE success.
Now update BOOTIMAGE ...
Update BOOTIMAGE success.
Load logo file from SD car ...
Load Logo success.
Now update LOGO ...
Update LOGO success.
Load NK file from SD car ,please wait several minutes ...
```

- 4).adjusting screen(after adjust the screen correctly,then can running the following steps);



- 5).upgrade interface;4)upgrade bluetooth;6).upgrade FLASH;7).upgrade MCU;
6)after the upgrade,the core function board'led will flicker;
4. If you have upgraded the MCU,then will appear following interface:



After pulled out of the card,the machine will restart automatically,or if you didn't upgrade the MCU,then it will run the interface program,and you should remove the card and it will restart artificially.