

# MISCAN M8 Wireless Auto Scanner

## User Manual



**2013**

# Introduction

## Welcome to use **Miscan M8** Instrument

Thank you for using MiscanM8 Automatic Diagnostic Tool (hereinafter called M8 ).

This manual mainly contains customer support, device overview, device registration method, device connection, device operation method, and device upgrade method, etc.

Therefore, please read this manual carefully before using the instrument so that you can use it in a quick and correct way. The manual only introduces how to operate and use the instrument.

Please refer to original repair manual for repair and diagnosis of a specific automobile. The manual is prepared based on the existing functions and configurations of product. Its contents are subject to change without notice.

## Copyright

The Copyright of this Manual will be belonging to Miscan, Any person and company will be prohibited to copy or release by any form.

## Trade Mark

The trade marks referred and other trade marks in the user manual belong to registered company.

## Customer Support

To obtain the assistance with a question or problems during using Godiag scanner, or to arrange warranty or non-warranty repairs, to contact our customer support center is provided.

## **Before contact us:**

### **Before making a call or Email to our custom support center**

- 1,Your name &address should provided.
- 2,Serial number of the equipment
- 3,parts number& quantity of the items to be requested
- 4,your phone number or email address which our technician may be reached.

### **Prepare a brief description of the problems ,like**

- 1,When the problems occurred
- 2,List the errors when display in the laptop
- 3,Vehicels information( brand,model,year---)

## **Why using this manual**

To increase their effectiveness of Miscan,familiarize yourself with the format and information in this manual, so that you can practiced and effectively operate Miscan.

## **Vehicles system familiarity**




Even though M8 is a powerful auto diagnostic tool, but it cannot replace knowledge & skills.




In order to get more better to operate M8 , it is necessary to have a complete understanding vehicles system.

When using M8to diagnose the vehicles, you'd better also refer service manual and other similar service bulletins.

## For Your Safety

To ensure proper use of this products and prevent personal injury and property damage, various graphic displays are used in the user’s manual. The graphic Displays and respective meanings are described as follows.

 <b>Warning</b>	Warning message alert your to a procedure or practice which, if not followed correctly, could lead to death or serious injury.
 <b>Caution</b>	Caution messages alert you to a procedure or practice which , if not followed correctly, could lead to serious injury and/or property.
<b>Icon Examples</b>	 This symbol alerts you to prohibited action

 <b>Caution</b> <p>When operate any checking with engine running in an enclosed place like garage, make sure there is proper ventilation. Never inhale exhaust gases.</p>	 <b>Caution</b> <p>To help avoid personal injury, always set the parking brake securely and block the drive wheels before performing any checks or repairs on the vehicles.</p>
 <p>Drives should not operate the unit while Driving. -Operating the unit while Driving may result in a traffic accident.</p>	

### Please Note

- Do not expose the PC or M8 to direct sunlight or high temperatures, or leave the unit in sun-heated cars. Such action may result in system failure
- Store the PC and M8 in a dry environment at room temperatures.
- Protect the PC and M8 from exposure to elements such as rain, dirt dust, food and liquids.
- Be careful when handling the PC and M8. Dropping the units may result in admage.
- Do not expose either unit to engine oil, gasoline, antifreeze or battery acid.

# Tables of Contents

Introduction .....	1
Tables of Contents .....	5
1.Products Overview .....	7
1.1 Functions .....	7
1.2 Features.....	8
2. Hardware Instruction.....	8
2.1 Hardware Introduction .....	8
2.2 Hardware Connection Introduction.....	9
2.3 Vehicle Connection.....	9
2.4 Communication Configuration .....	10
2.5 Socket Introduction .....	11
3. Operation Condition.....	13
4. Usage Instruction.....	14
4.1 Miscan M8 Software Installation and Configuration.....	14
4.1.1 Steps of Miscan M8 Software Installation .....	14
4.1.2 Miscan M8 Software Using Instruction .....	24
4.1.3 Ways to Checking the Hardware/ PC Connection is Good .....	25
4.2 Wireless Communication.....	28
4.2.1 TCP/IP Setting on Computer Wireless Device .....	26
4.2.2 Problems Might be Met When Wifi Setting and the Ways to Solve .....	36
4.2.3 The Ways to Modify The Com Port.....	36
5.Using OEM Original software .....	40
5.1 Using Toyota Techstream software as an example.....	40

6.Solutions During Installation .....	44
7. Products Update .....	44
7.1 Software Update.....	44
7.2 Hardware Update .....	44
8. Maintenance and Service .....	44
8.1 Limit Range of Maintenance Service .....	44
8.2 Out of Guarantee Range .....	46

# 1.Product Overview

**Miscan M8** is the latest wireless automotive diagnostic tool based on PC. It was designed by the new international standard, it can identify different vehicles intelligently and can support almost vehicles available in the market.



① M8 Interface

② M8 Diagnostic Software

## 1.1 Functions

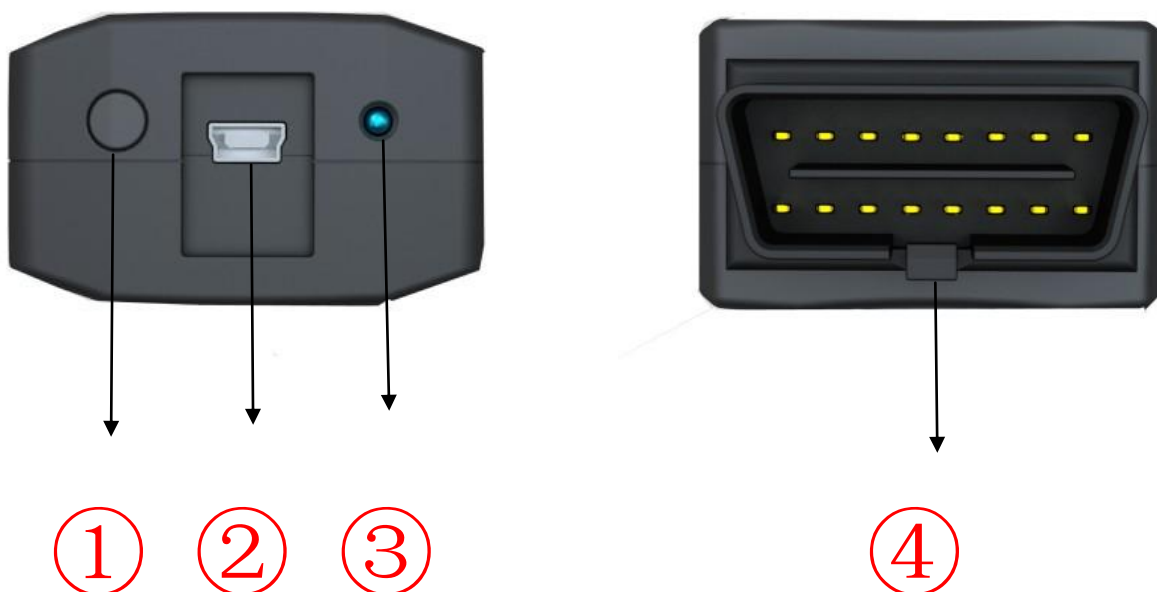
- Adopt 16 digit Dual Cell specialized CPU, Full compliant with all vehicles protocols.
- Diagnostic software accord with international standard, collocate communication port flexibly, less connectors support almost all vehicles socket.
- Selfdetermination design for connectors and cables.

## 1.2 Features

ITEM	Description
CPU	16 digit Dual Cell specialized CPU
FLASH	256KB FLASH
Diagnostic Port	OBD 16 PIN
Wire Port	USB 2.0 or Wifi IEEE 802.11b/g
Power Supply	DC 5V-18V
Consumption	12W
Weight	150g
Size	110mm(L) X 50mm(W) X31mm(W)
Working Temperature	-20~+70 °C
Storage Temperature	-40~+85 °C

## 2. Hardware Instruction

### 2.1 Hardware Introduction



### Godiag Device Instructi

ITEM	NAME	Instruction
①	Reset & Upgrade Button	Reset Interface or use software upgrade
②	USB Socket	Connect Interface to Laptop with USB Cable
③	Indicate Led (Red)	Indicate Power or working status
④	Diagnose Connector	Standard CAN 16 Pin Socket

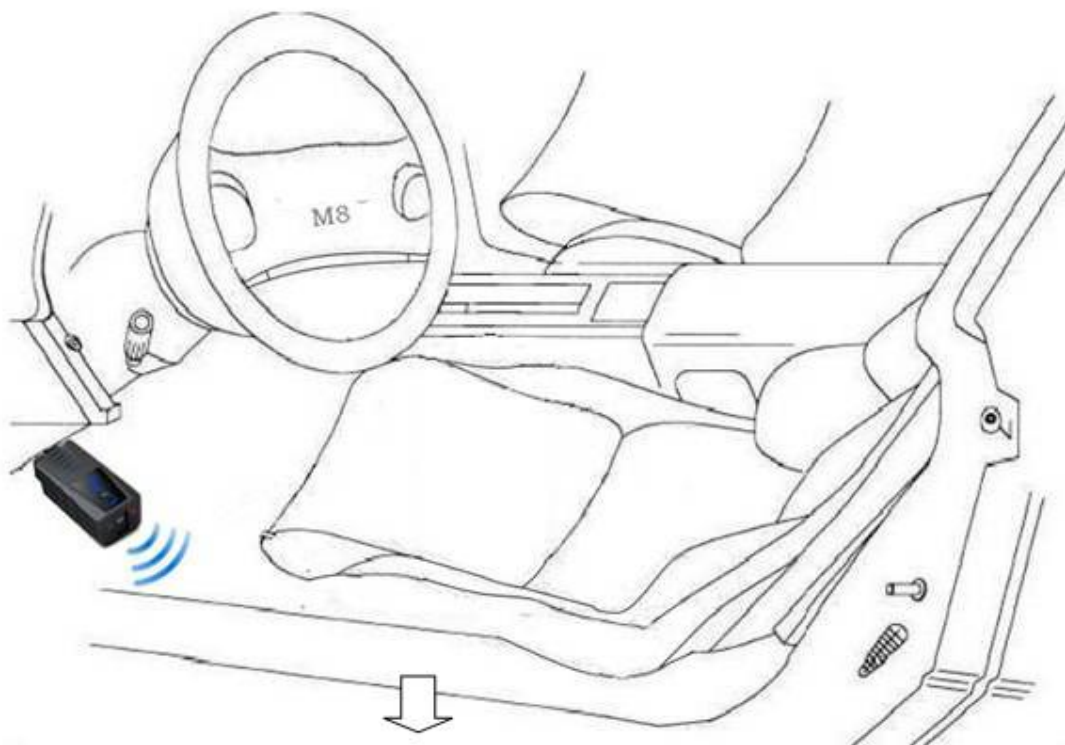
## 2.2 Hardware Connection Introduction



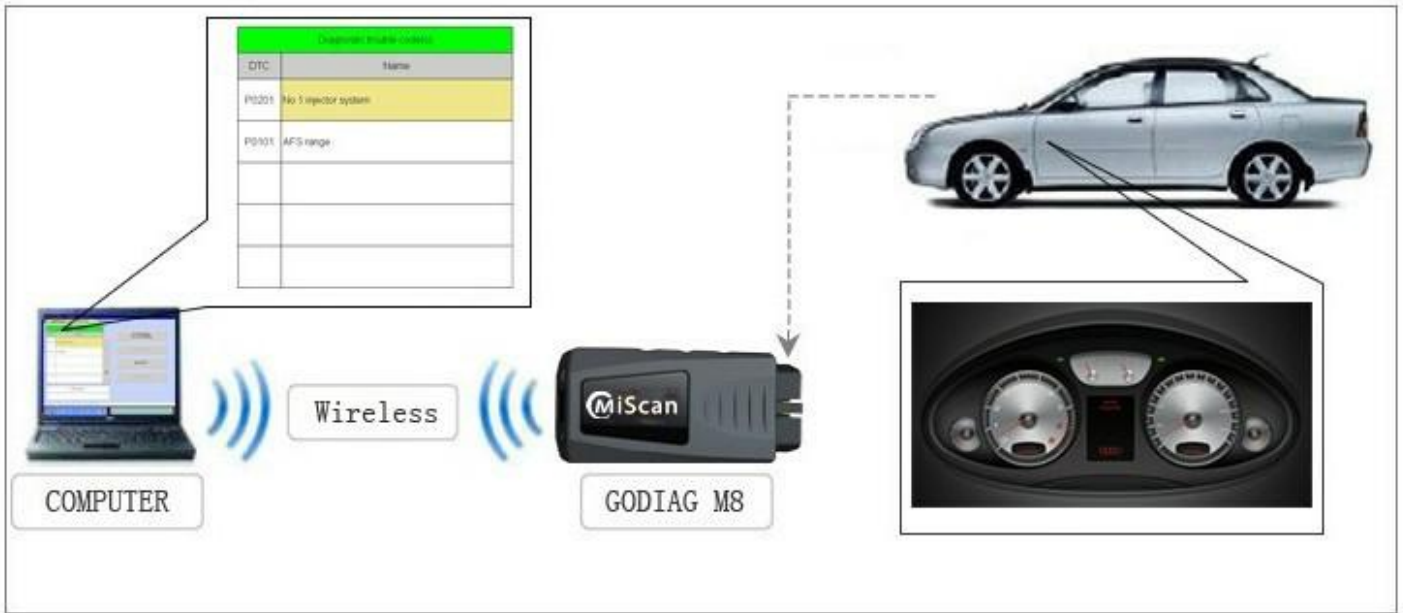
① Wireless Connection

② USB Connection

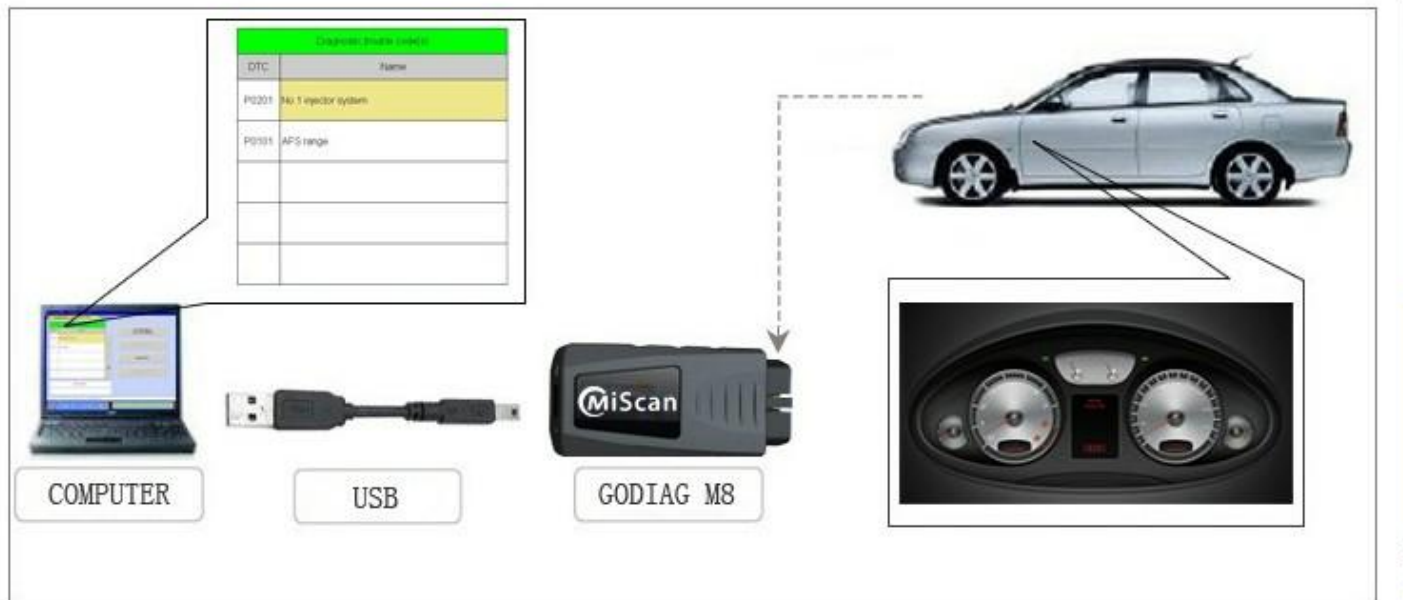
## 2.3 Vehicle Connection



## 2.4 Communication Configuration






**Wireless Connection on 16 Pin Car**










**Wire Connection on 16 Pin Car**

## 2.5 Socket Introduction

As different vehicles need different sockets, the following sheet is the introduction of the mating sockets.

Name	Introduction	Picture
<b>KIA 20-PIN Cable (Standard)</b>	To diagnose KIA with 20PIN	 A red diagnostic cable with a 20-pin connector on one end and a red diagnostic socket on the other.
<b>Mitsubishi /Hyundai 12 Cable (Standard)</b>	To diagnose Mitsubishi /Hyundai with 12PIN	 A red diagnostic cable with a 12-pin connector on one end and a red diagnostic socket on the other.
<b>Mitsubishi /Hyundai 16Cable (Standard)</b>	To diagnose Mitsubishi /Hyundai with 16PIN	 A red diagnostic cable with a 16-pin connector on one end and a red diagnostic socket on the other.

<p><b>Nissan14-PIN</b> <b>Cable</b> <b>(Standard)</b></p>	<p>To diagnose Nissan with 14 PIN</p>	
<p><b>Nissan16-PIN</b> <b>Cable</b> <b>(Standard)</b></p>	<p>To diagnose Nissan with 16 PIN</p>	
<p><b>Toyota 22-PIN</b> <b>Cable</b> <b>(Optional)</b></p>	<p>To diagnose Toyota with 22PIN (this is mainly for old car models, please use Godiag general software to diagnose)</p>	
<p><b>Honda 3-PIN</b> <b>Cable</b> <b>(Optional)</b></p>	<p>To diagnose Honda with 3PIN (this is mainly for old car models, please use Godiag general software to diagnose)</p>	
<p><b>Audi 4-PIN</b> <b>Cable</b> <b>(Optional)</b></p>	<p>To diagnose Audi with 4PIN</p>	

<p><b>Ignition Lighter Cable</b> <b>(Standard)</b></p>	<p>To diagnose device for power supply</p>	
<p><b>USB Line</b> <b>(Standard)</b></p>	<p>To connect A500.G3 scanner with the pc</p>	

### 3. Operation Condition

Miscan M8 needs to connect with PC to realize diagnostic and other functions, the minimum computer requirements to execut the Miscan M8 diagnostic software is as follows.

Item	Details
Processor	Pentium3/1GHz or higher
RAM	At least 1G or higher
Hard Disk Drive	160G or higher
Operation system	Microsoft Window XP Professional (Version 2002)
Networking/Communication	Integrated or installer 802.11b/g WiFi certified wireless network card -USB 2.0
Graphic	Resolution 800X600 or higher

# 4. Usage Instruction

## 4.1 Miscan M8 Software Installation and Configuration

Note

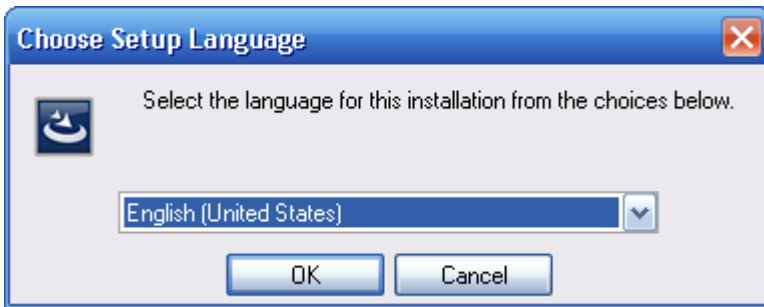
The Instruction on the software and operation system setting in this manual are applicable on Microsoft Windows XP professional Only.

### 4.1.1 Steps of Miscan M8 software Installation

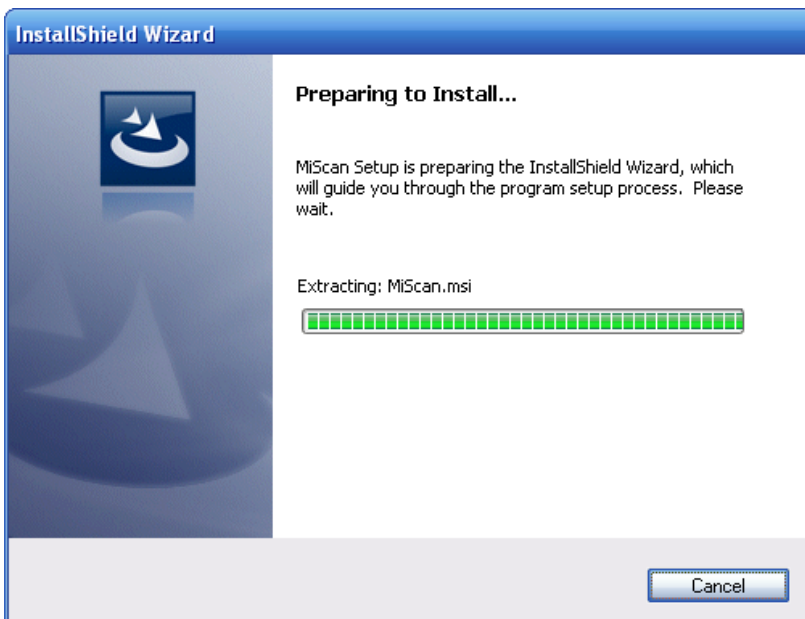
1, Double click **【Miscan\_Setup\_V3.0.0.0.exe】** which is contained in the CD-ROM.



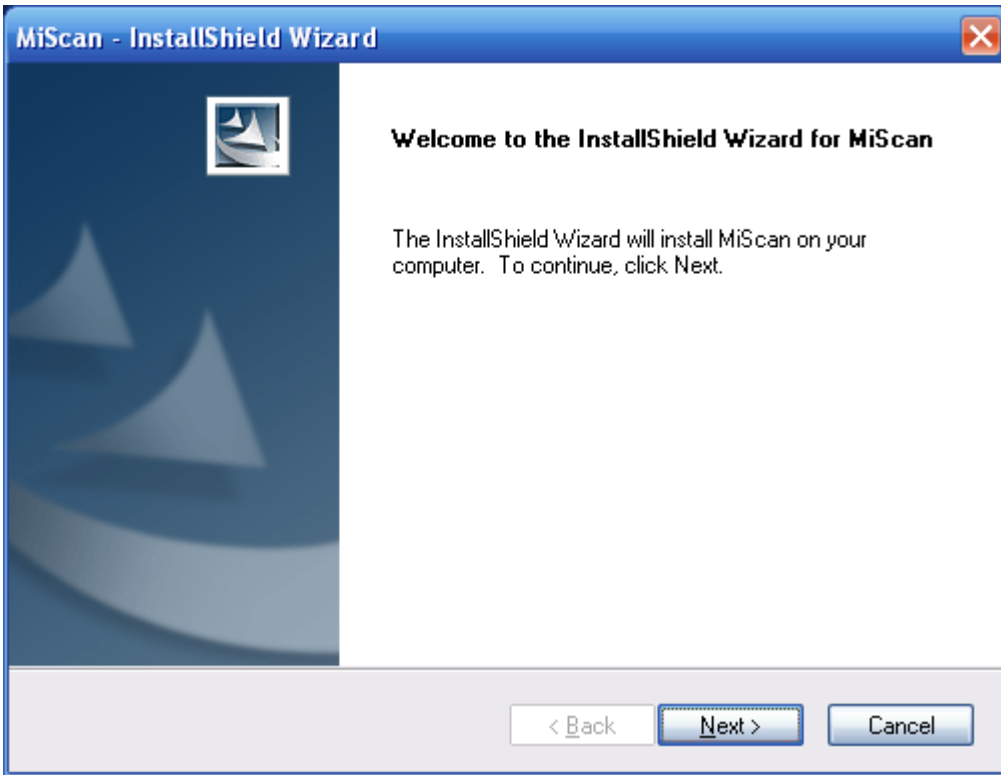
2, Choose Setup Language then Click **【OK】**



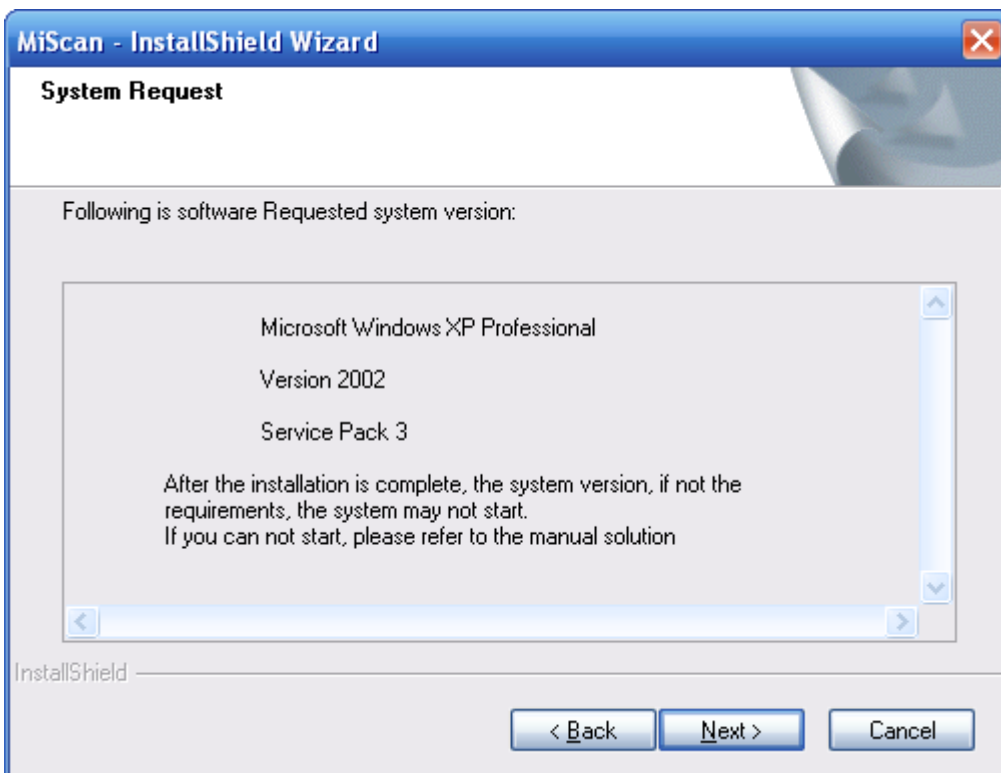
3, Preparing to Install



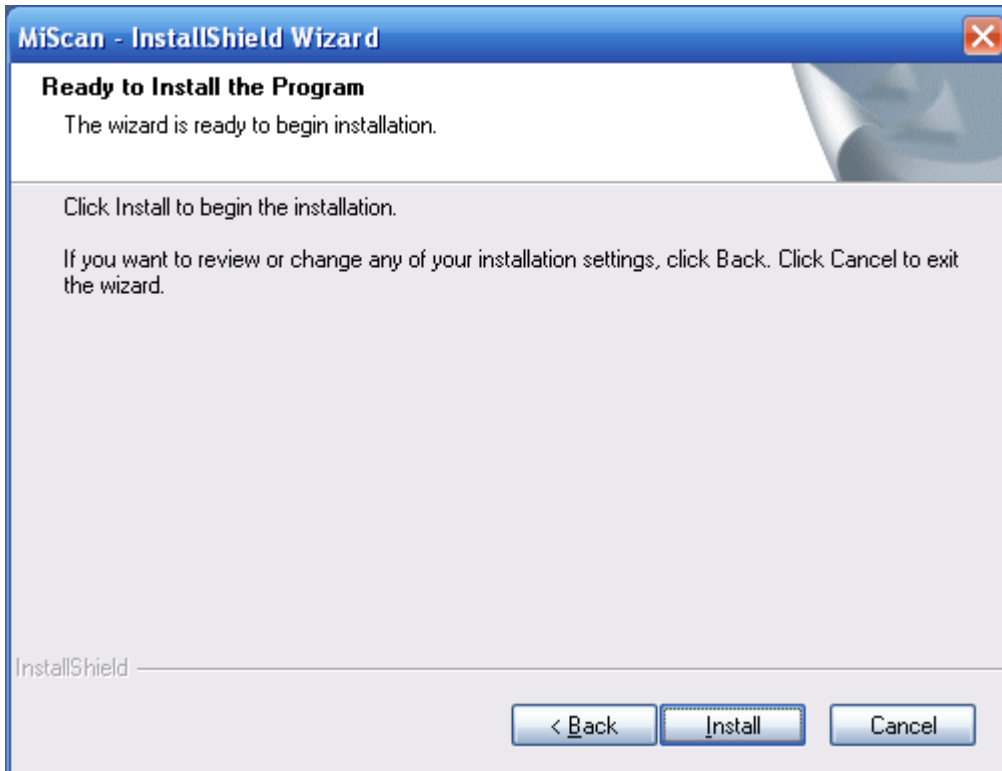
4, On the Welcome page ,Press “Next” button to continue the installation or press “Cancel” to abort installation.



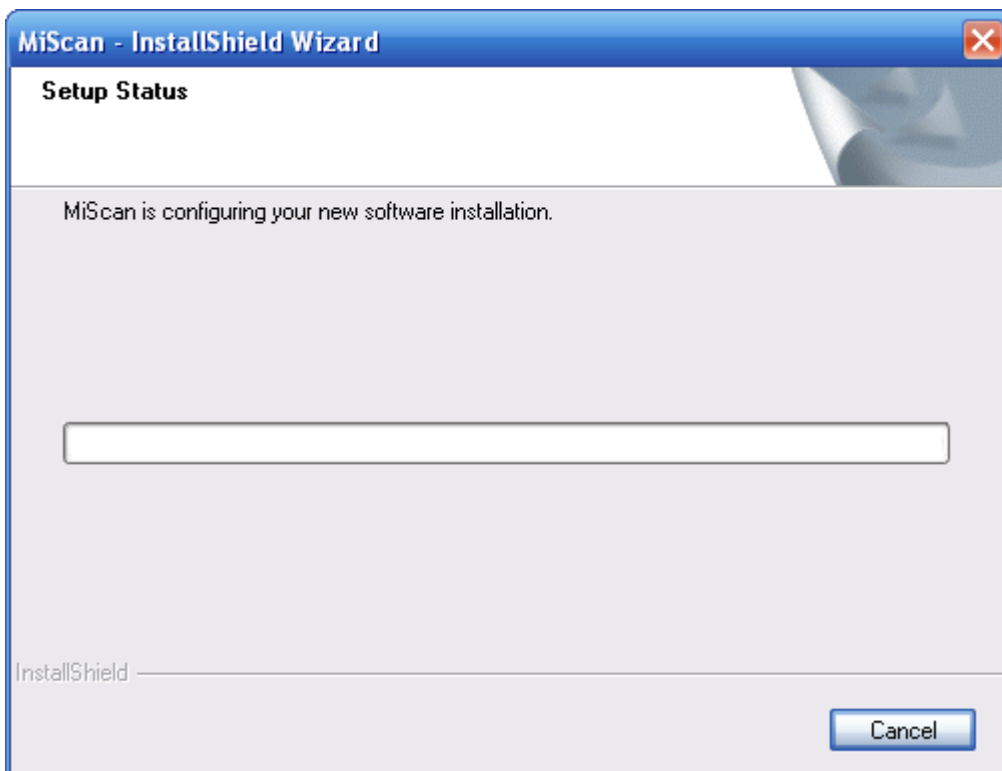
5, Install System Request, Click 【Next】



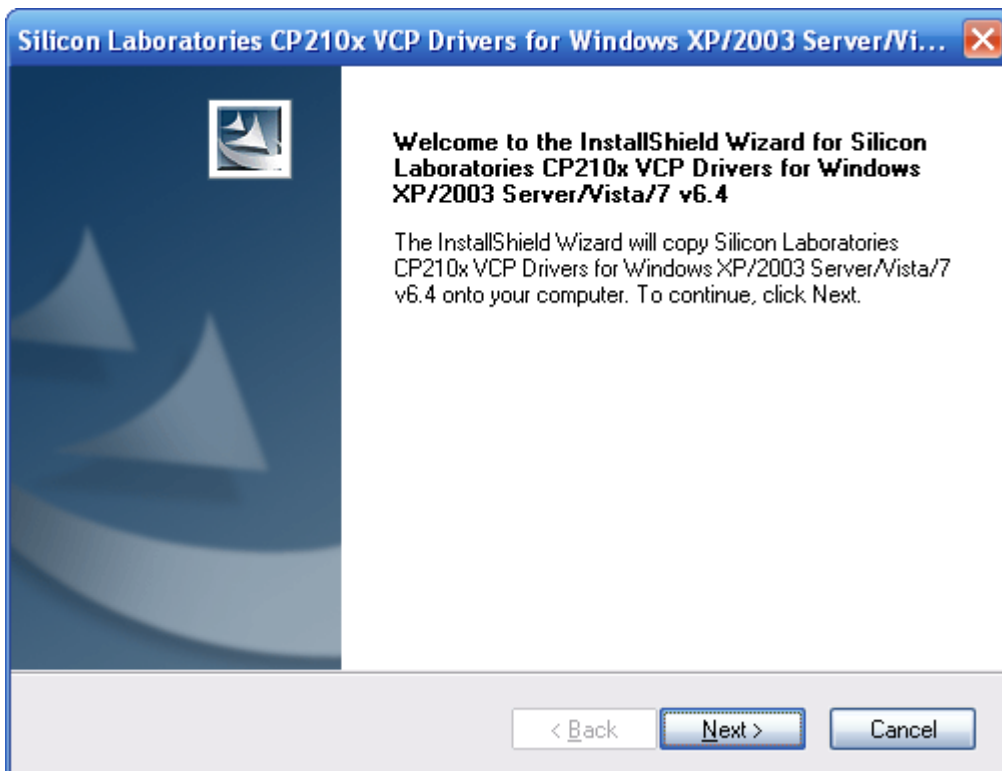
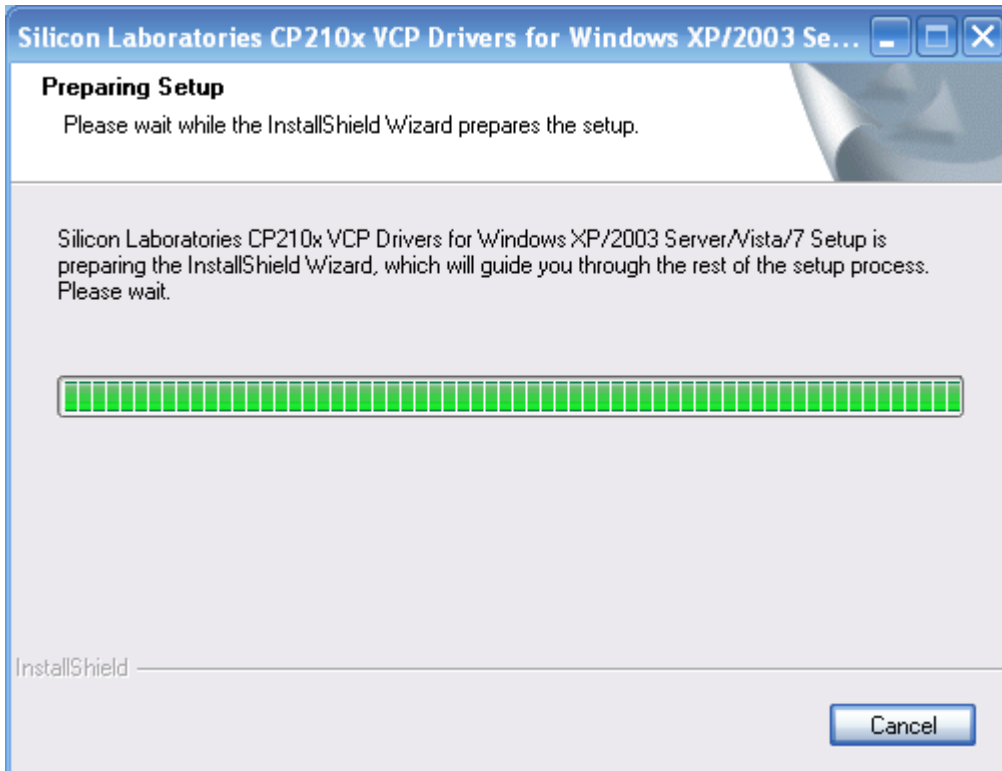
6, Ready to install the program, Click **【Install】**



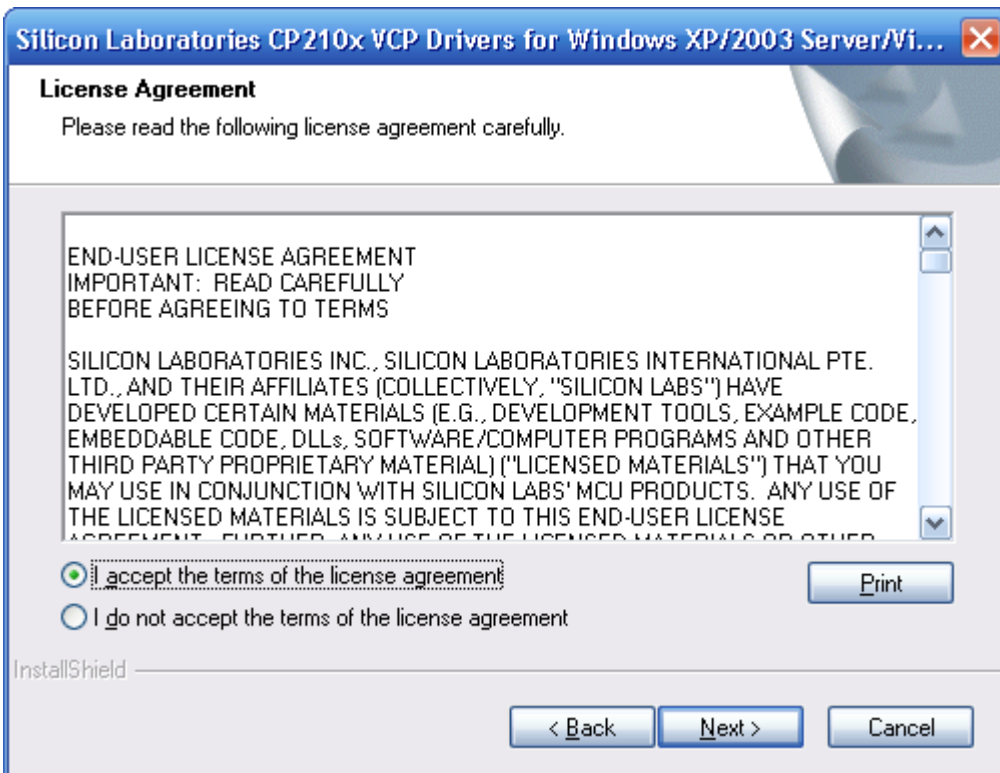
7, Setup Status. After you that, you will see the page with progress bar moves along the installation. Click the “cancel” button if you want to abort the installation.



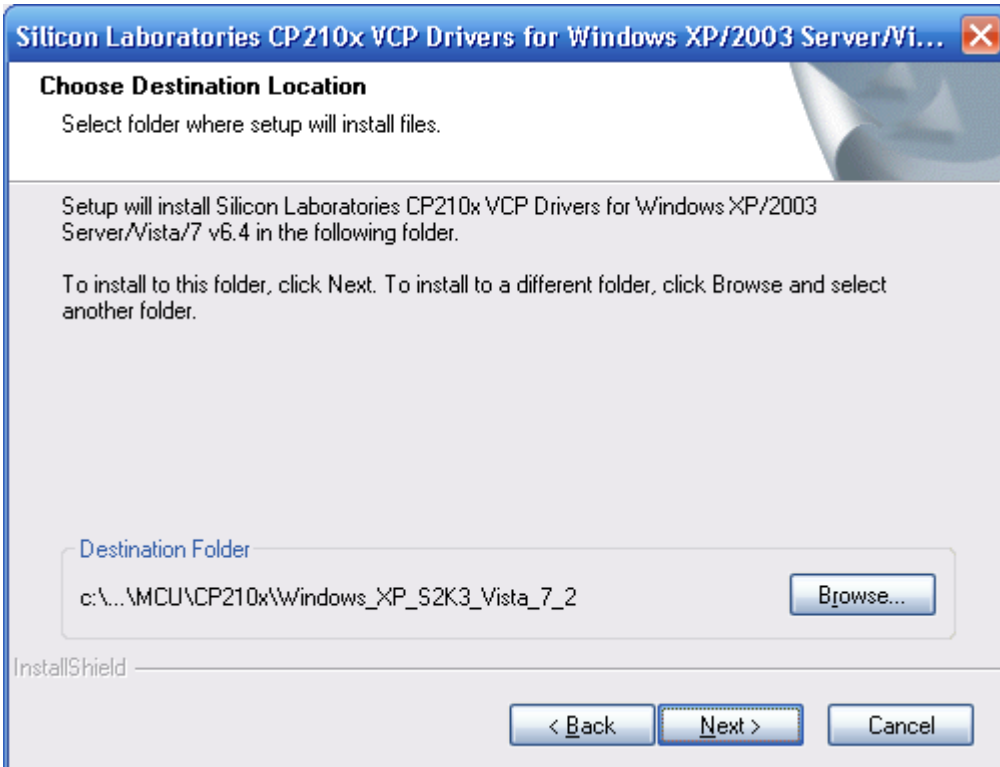
8, Install CP210X VCP Drives, then Click **【Next】**



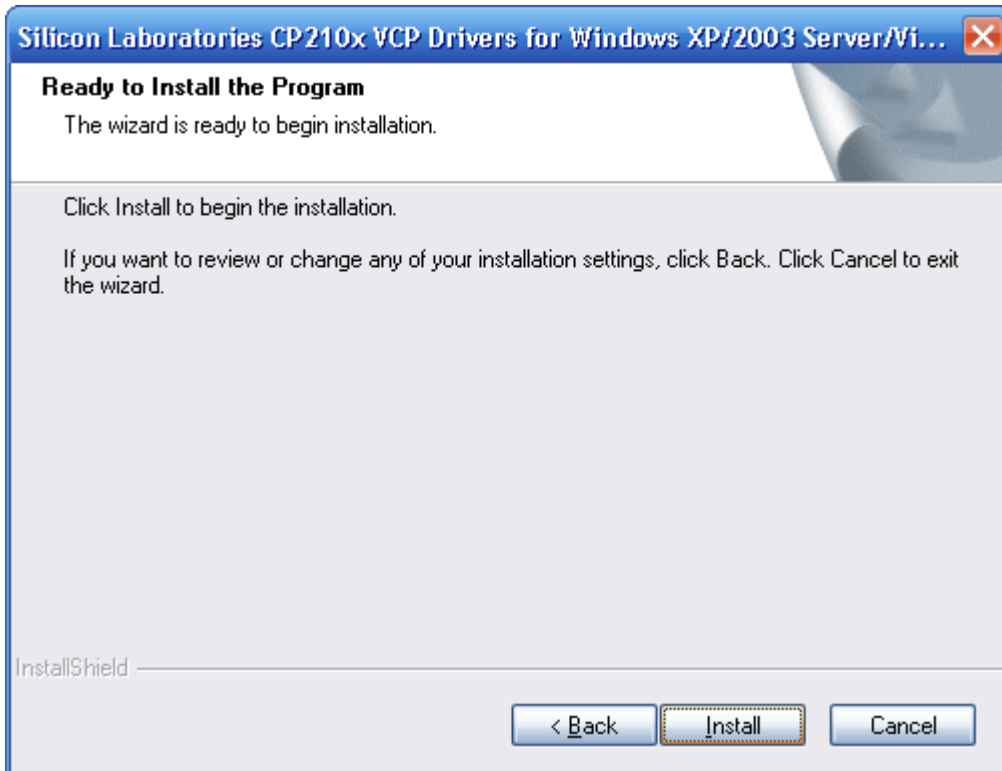
8.1 Sign CP210X VCP Drivers License Agreement, Single Click **【I accept the terms of license agreement】** ,Click **【Next】**



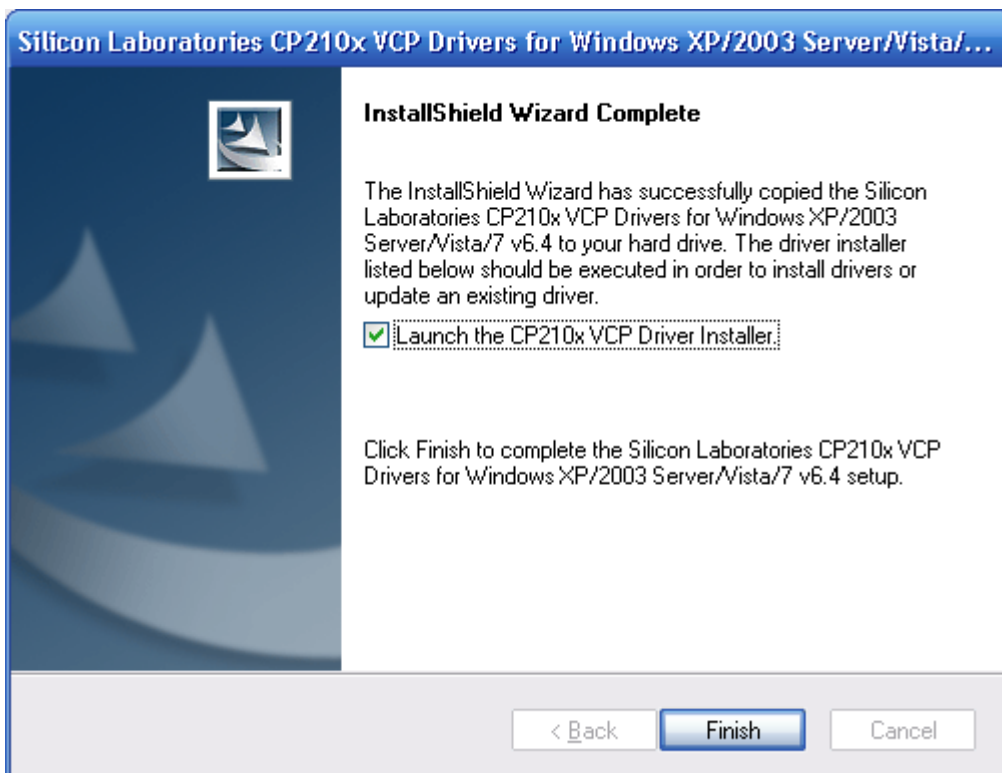
## 8.2 Choose CP210X VCP Drivers Destination Location



### 8.3 Ready to Install the CP210x VCP Drives.



### 8.4 Finish installing of CP210x VCP Drives, Click 【Finish】

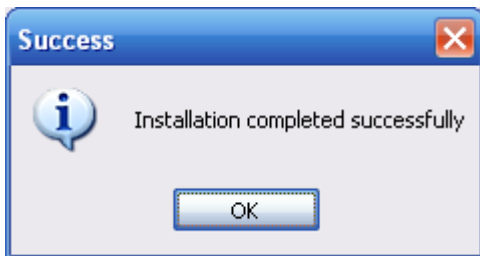


## 9, Install CP210x USB to UART Bridge Driver

9.1 Click **【Install】** ,if prompted need to restart the computer, choose later to restart.



9.2 Finish Install.



## 10, Install Auxiliary Driver(Simulation Framework)

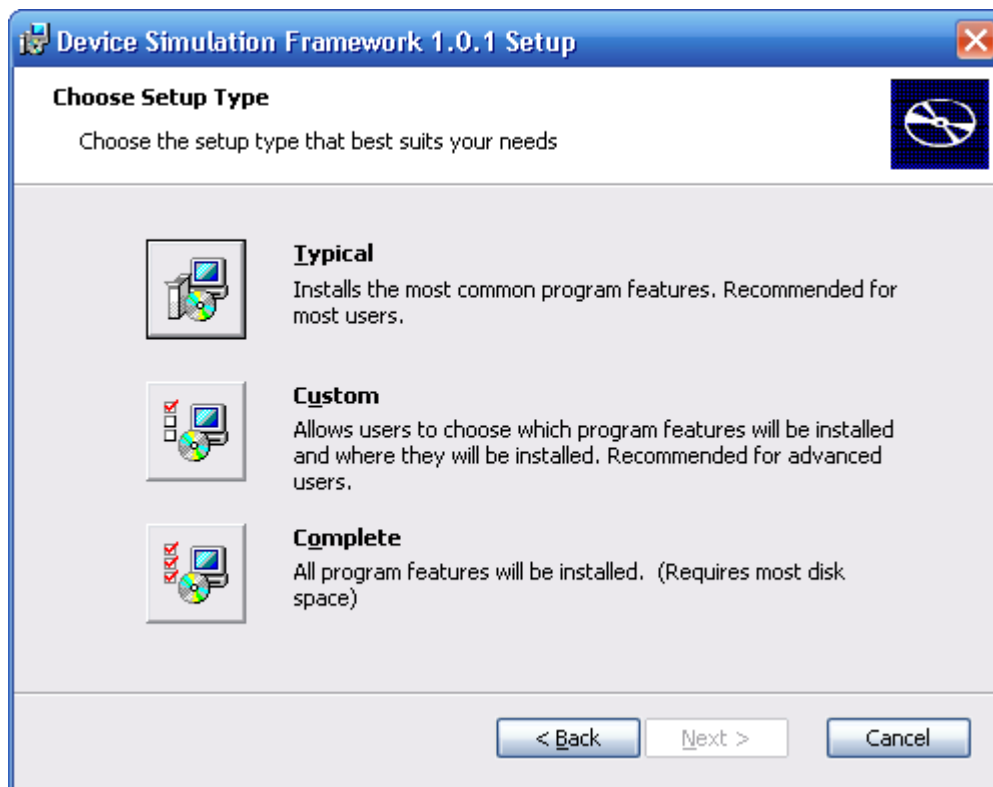
10.1 Click **【Next】**



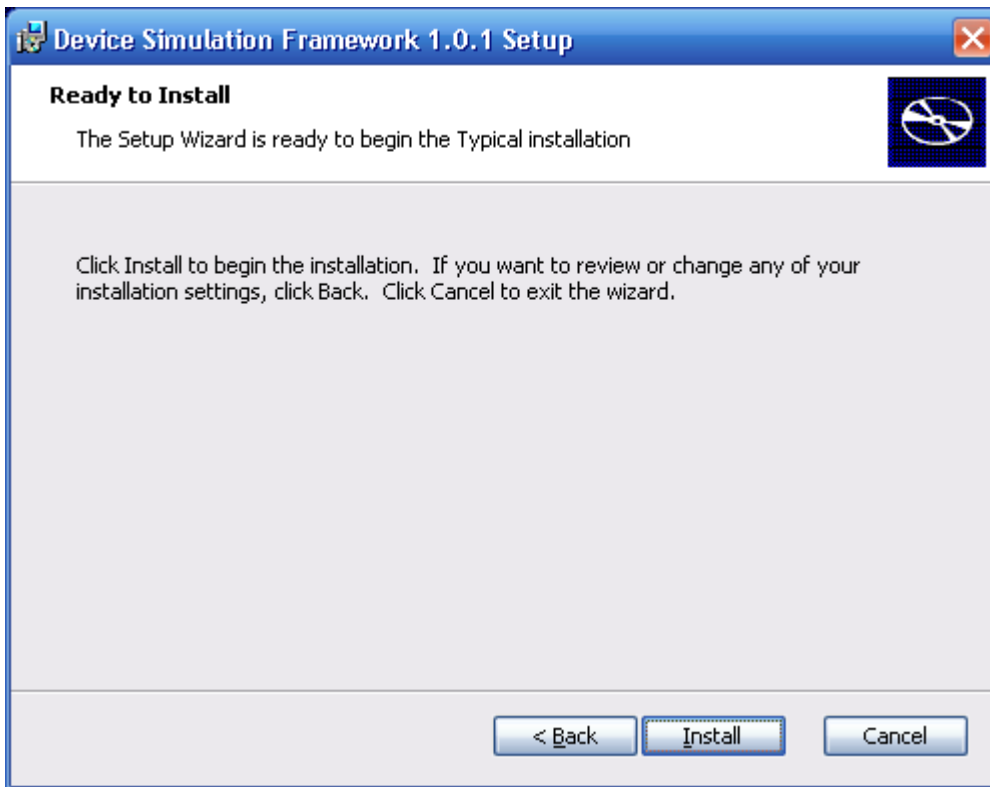
10.2 Sign Device Simulation Framework 1.0.1 License Agreement, Single Click **【I accept the terms of license agreement】** ,Click **【Next】**



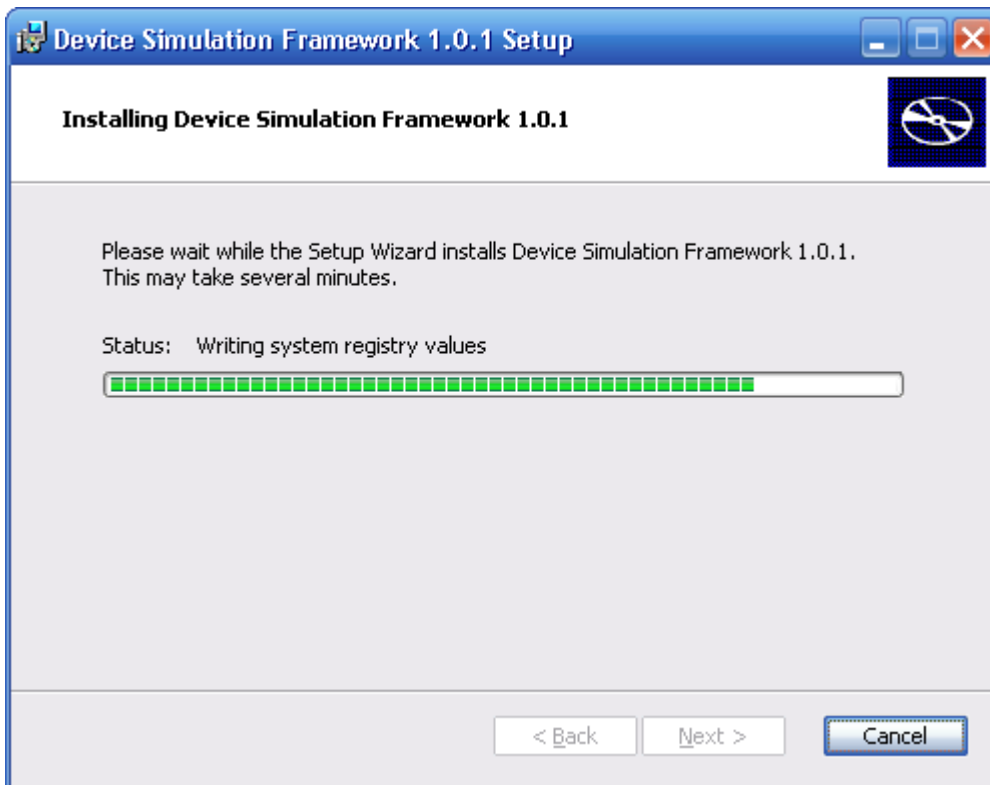
10.3 Choose Simulation Framework Setup Type, Choose **【Typical】** ,Click **【Next】**



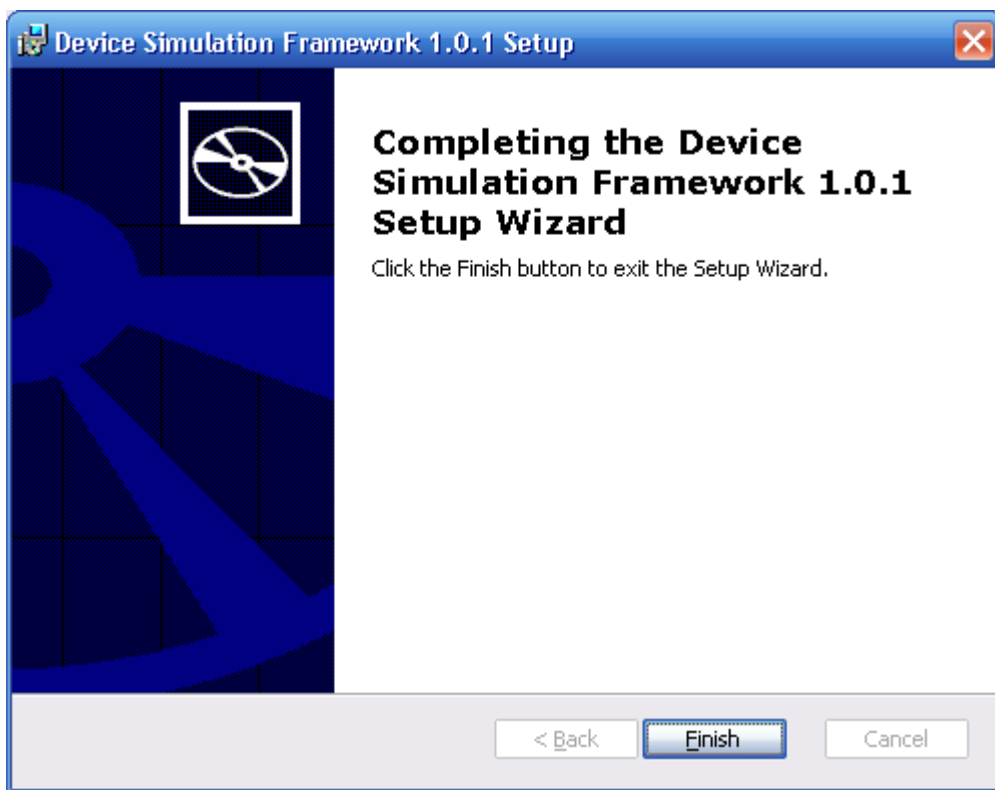
#### 10.4 Ready to install Simulation Framework, Click **【Install】**



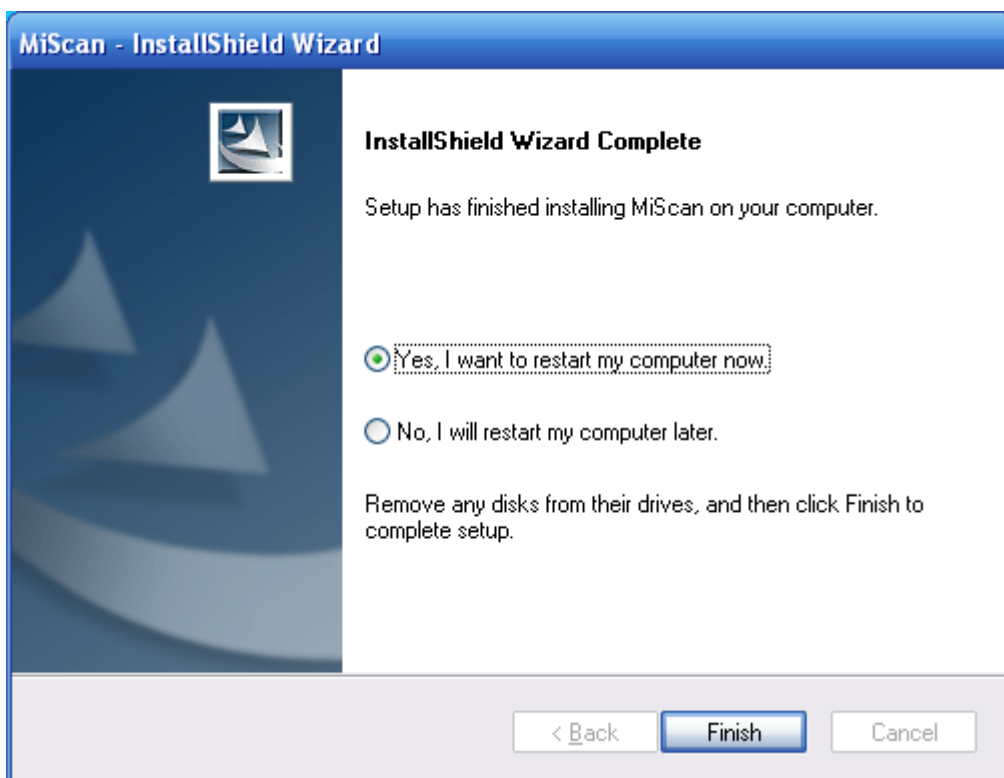
#### 10.5 Installing Simulation Framework, Click **【Install】**



10.6 Finish Installing Simulation Framework, Click **【Finish】** .If Prompted need to restart the computer, choose later to restart.



11, Finish Installing Miscan M8 Software, please restart the computer, Click **【Finish】**



## 12, Launching Godiag Software

After the installation is completed, you can launch the program by launch the shortcut from the start menu or from the desk. The following two figure are the screenshots of the shortcut.



{Figure 1}



{Figure 2}

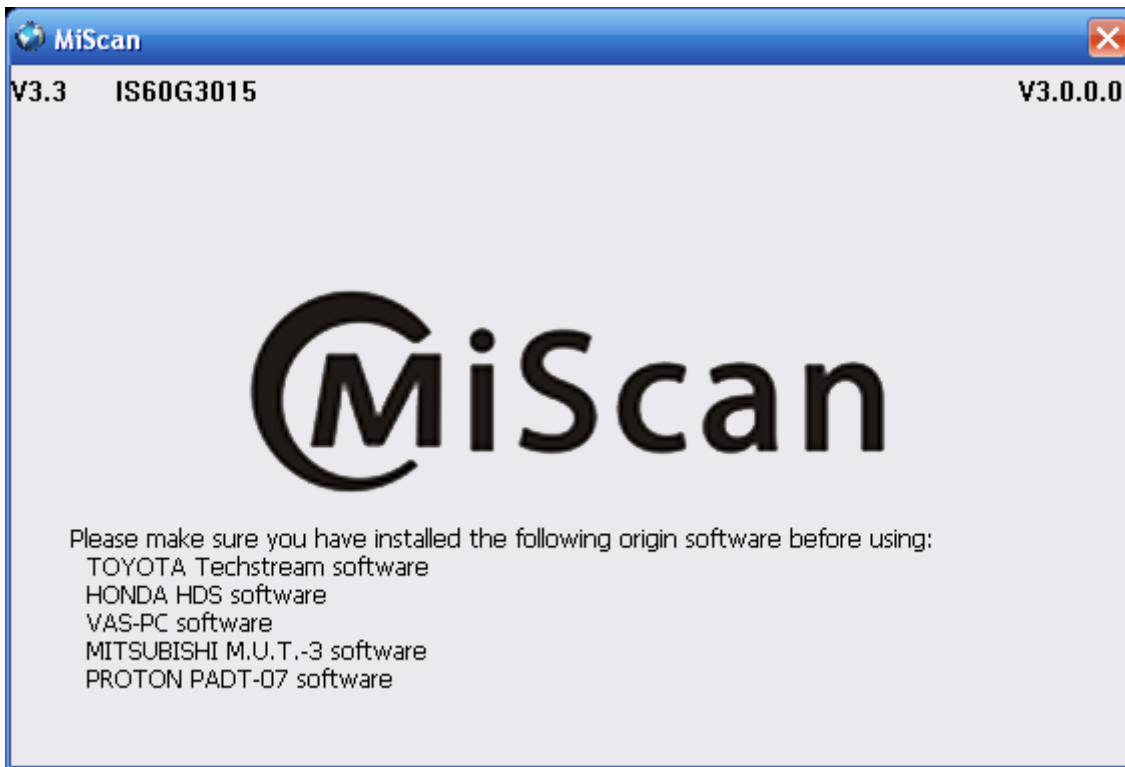
**Attention:** If can not run the software normally after restart the system, please press {F8} button on the keyboard after the system checking the hardware, choosing “The last time correct configuration”, then the system can run normally. If meet this case, that means this system can not run Miscan Software.

### 4.1.2 Miscan M8 Software Using Instructions

1, When finish installing and restarting the system, Miscan M8 can run automatic and confirm if have installed the assigned original software, please make insure you have installing the following origin software (Toyota TIS/Honda HDS/MUT-3/Proton PADT) before using.



2, When first run the Miscan software,it will ask you to input the hardware ID.Please use connect the Miscan head to the laptop via USB cable, inputing the harddware ID and click {OK}.If the ID inputed is correct, it will appears the following icon, the harddware version is V3.3, hardware item code is IS60G3015.

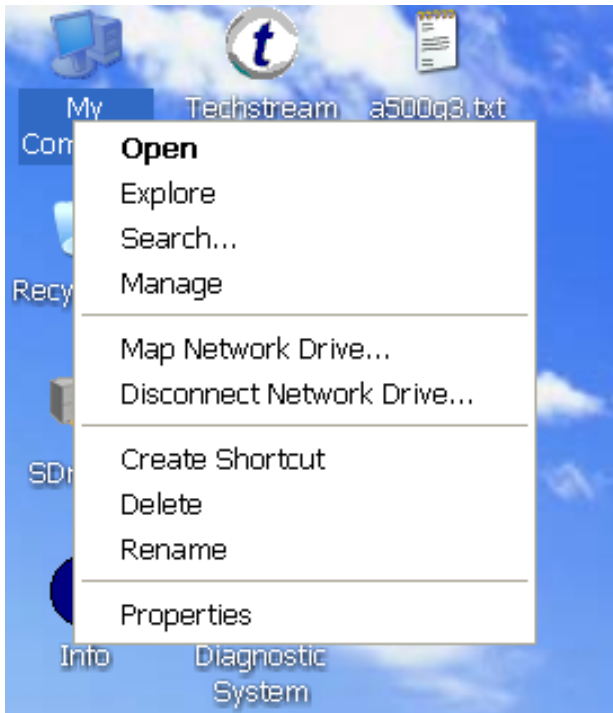


3,After a while ,the Miscan software interface will be gradually disappear.You can use the right button of mouse to open or close the menu option display interface in the task bar icon .



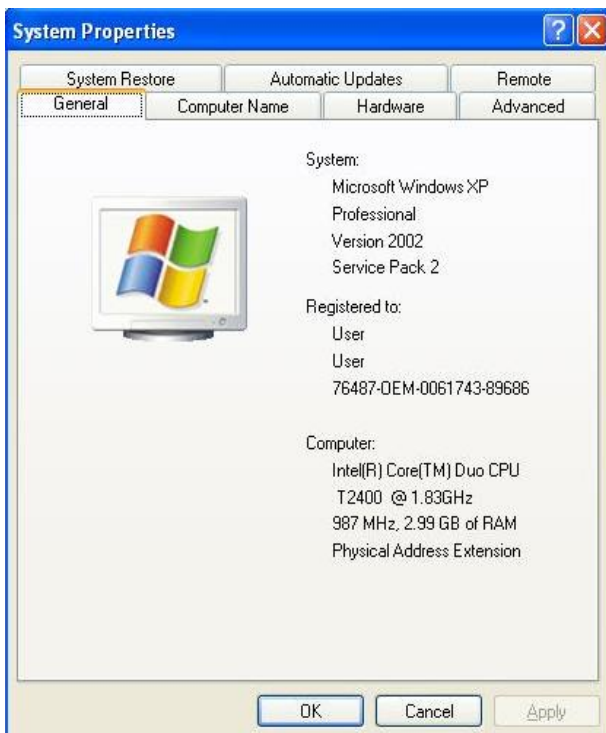
#### 4.1.3 Ways to checking the Hardware/PC Connection is Good.

**Important!** The following is to check whether the Hardware/PC connection is good.



Right click **【My Computer】** , then choose

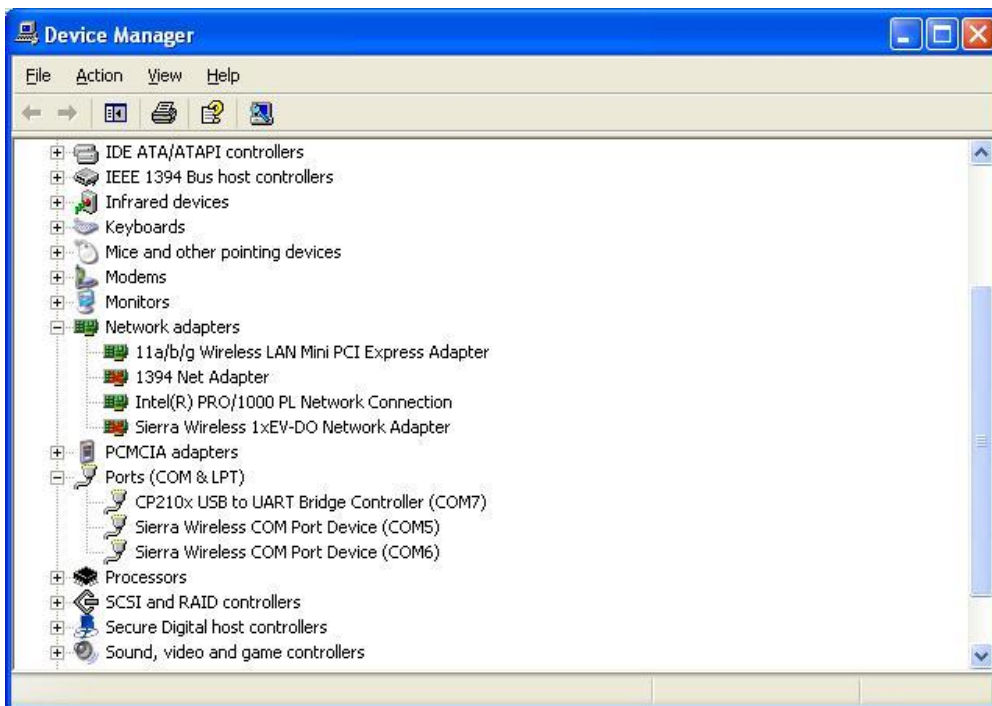
**【Properties】**



Choose **【Hardware】**

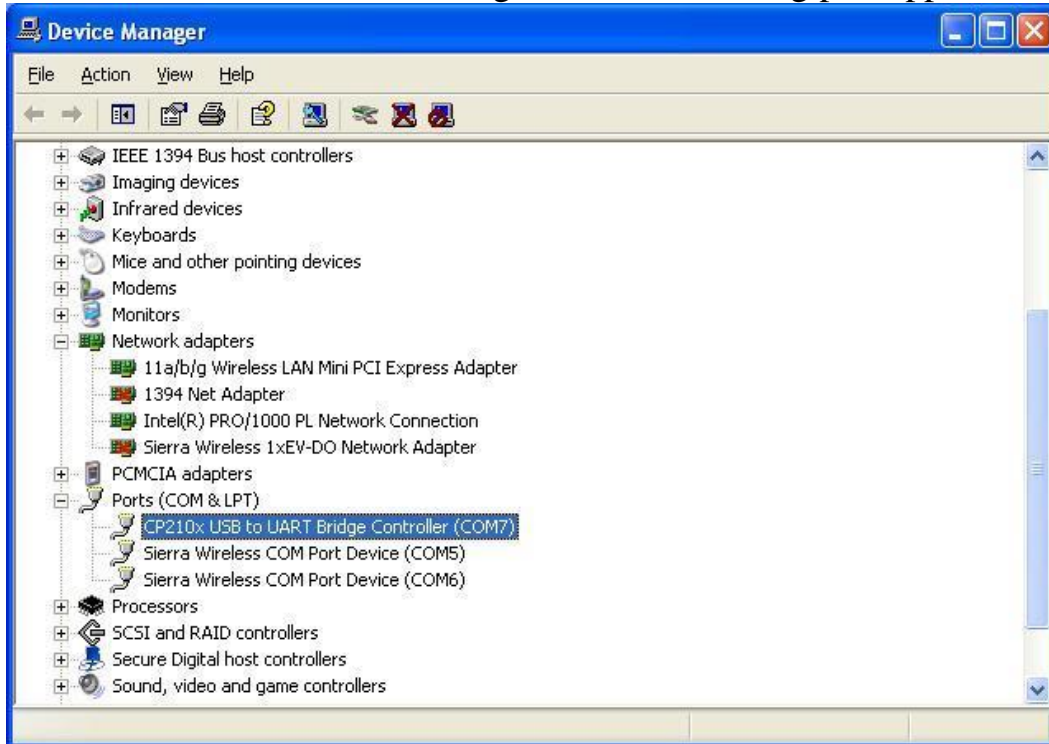


Click **【Device Manager】**



Click **【Ports】** .

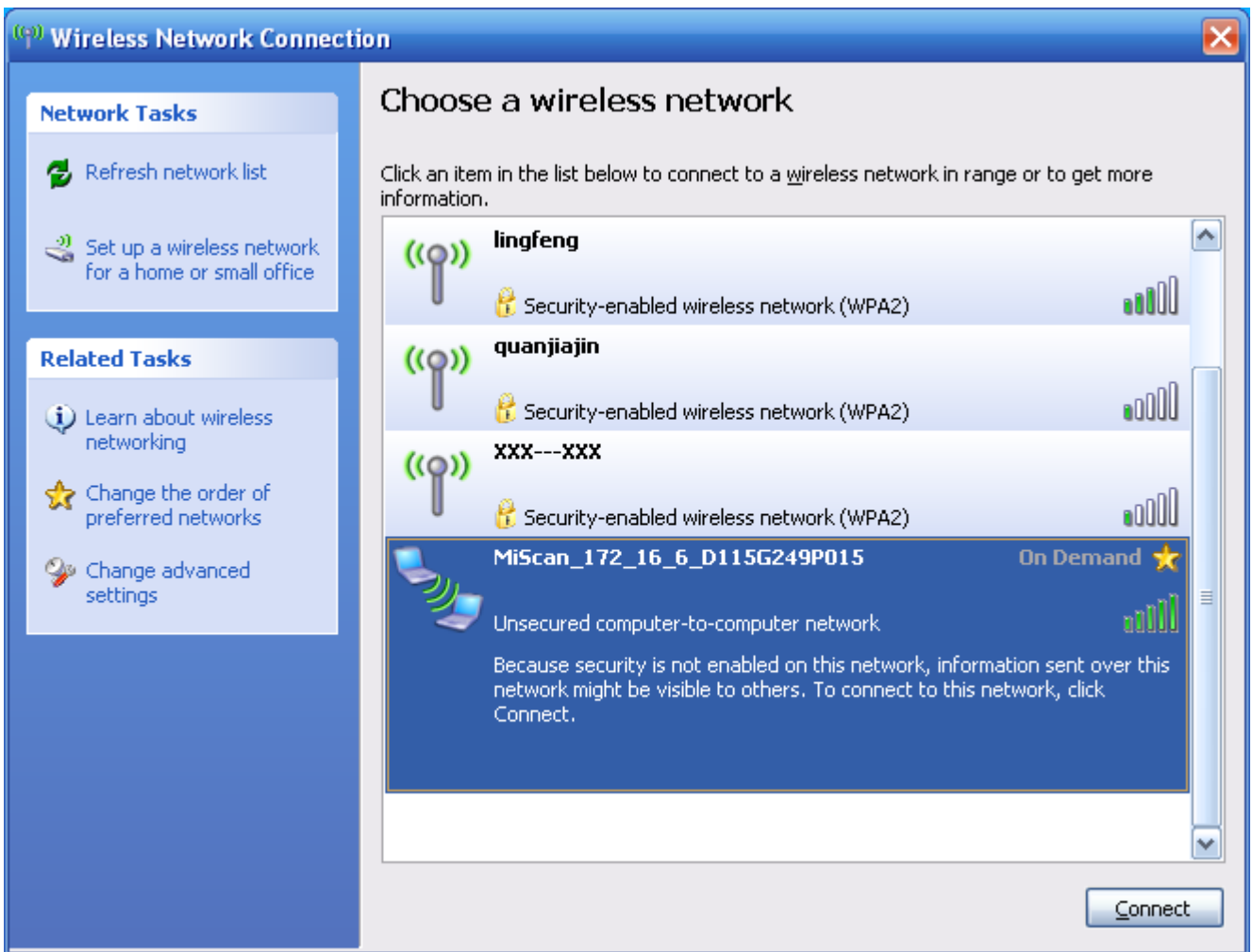
The Hardware/PC connection is good if the following port appears.



## 4.2 Wireless Communication

### 4.2.1 TCP/IP Setting on computer wireless device.

- 1, From the desk go to “Start”→“Control Panel”→”Network Connection”
- 2, Right Click on the “Wireless Network Connection” and Click “View Available Wireless Networks” to check the available wireless networks.



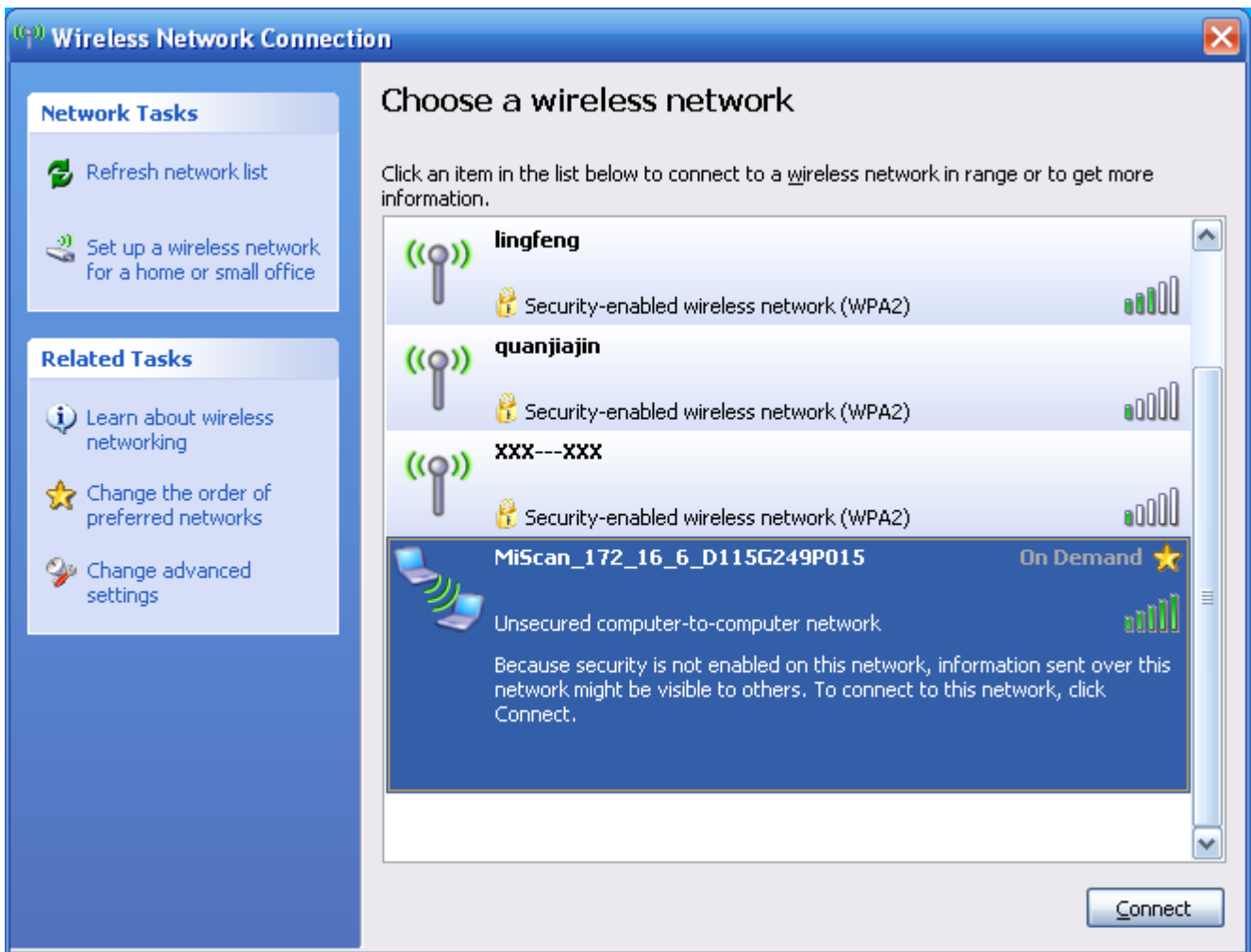
3, Click “Miscan\_172\_16\_6\_D115G249P015” network



” Miscan\_172\_16\_6\_D115G249P015 means for ”

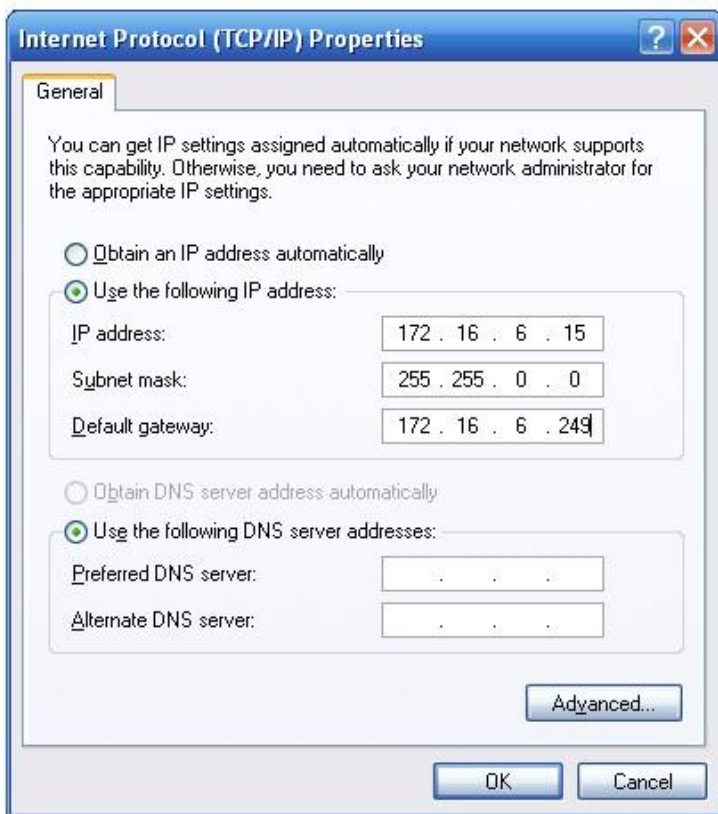
- ⊙ Product Name : Miscan
- ⊙ IP Address Segment : 172\_16\_6
- ⊙ Misca IP Address(D115) :172.16.6.115
- ⊙ Gateway IP Address(g249) :172.16.6.249
- ⊙ PC IP Address(P015) :172.16.6.15

4, Wireless Network Connection, Click “Connect”.



5, Click” Change advanced Settings”, and then right click on the “wireless network connection” and click “Properties”.

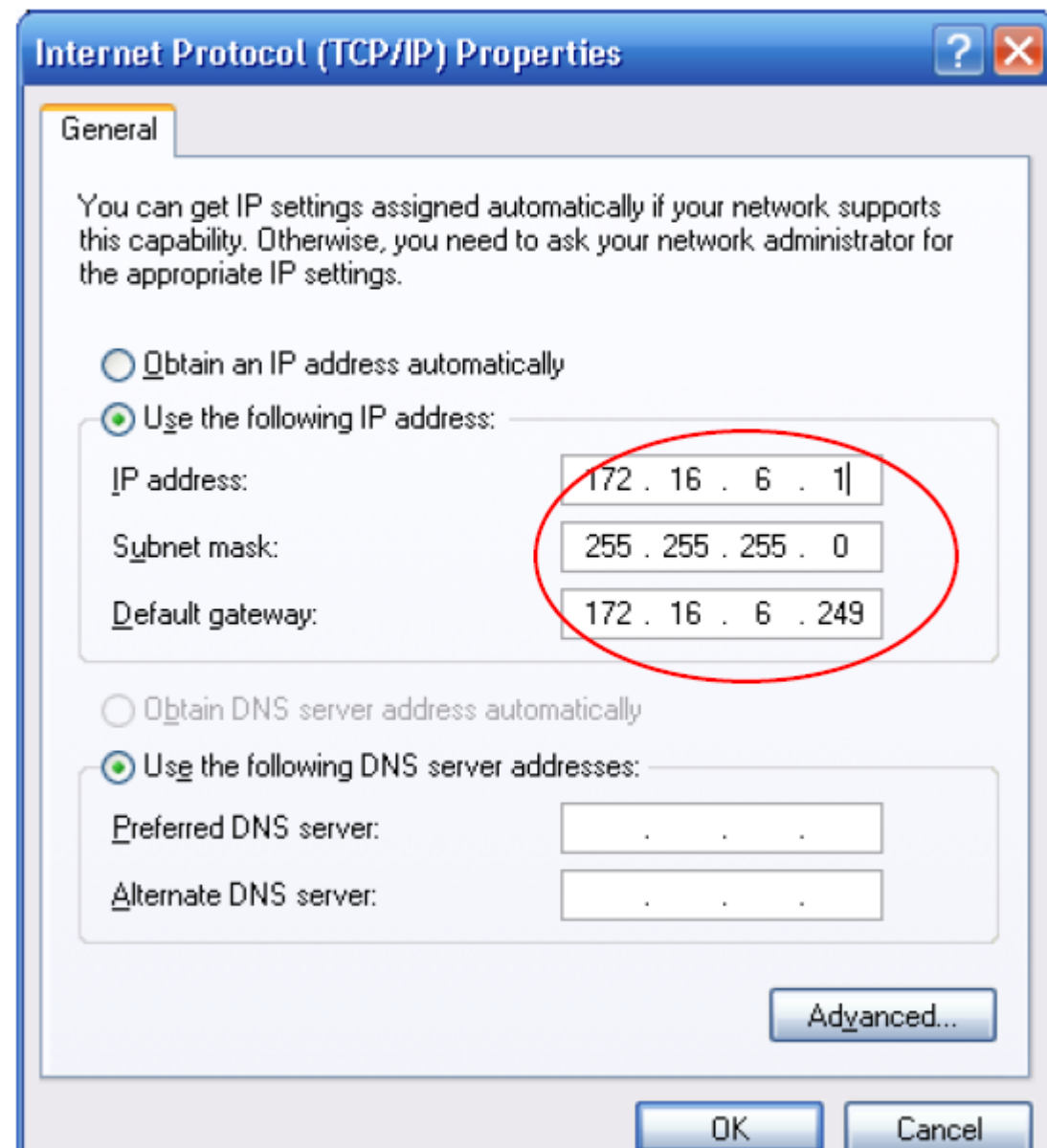
The “wireless Network Connection Properties” will appear .On the “General” tab go to the “This Connection uses the following items:”and scroll down the list and select the “Internet Protocol(TCP/IP).”



6, Then Click “Properties” button which is placed on the bottom right of the item list box.



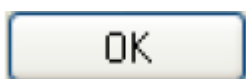
7, Now you will have the “Internet Protocol (TCP/IP) Properties” window and set the IP address, Subnet Mask and Default gateway as follows. The input boxes of the “Preferred DNS server” and the “Alternate DNS server” is to be left blank.



Note

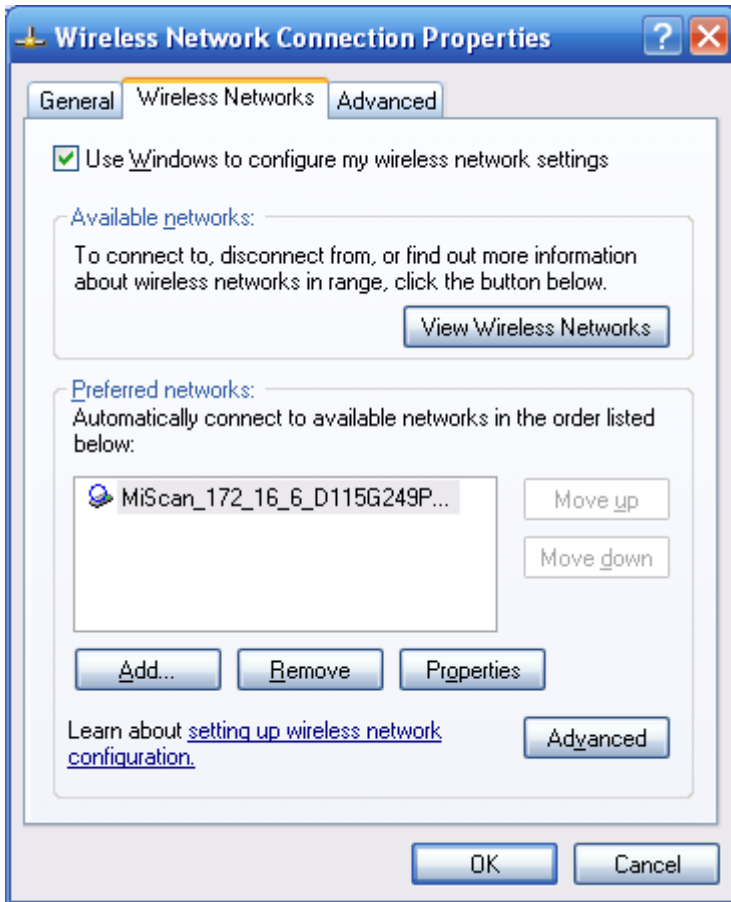
**Important!!** The IP address and Default gateway number is not unchangeable , every units have different IP address and Default Gateway number. The details you can reference the sticker in outer packing.

8, When you done with inputting the number click “OK” button on all windows.



9, On the “Wireless Network” tab under the “wireless Network Connection Properties” window go to “Automatically connect to available network in the order listed

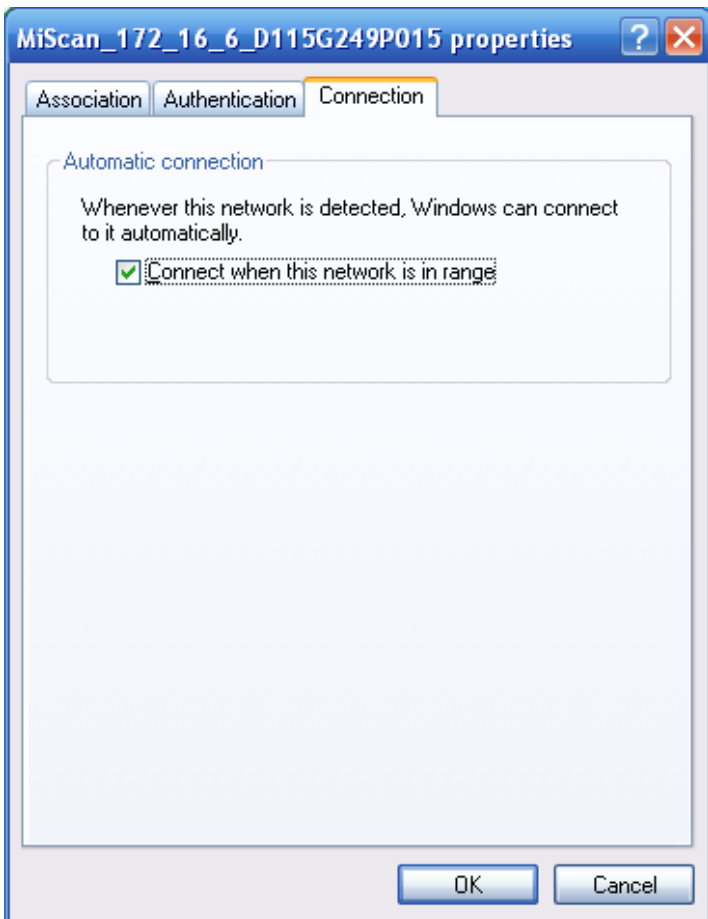
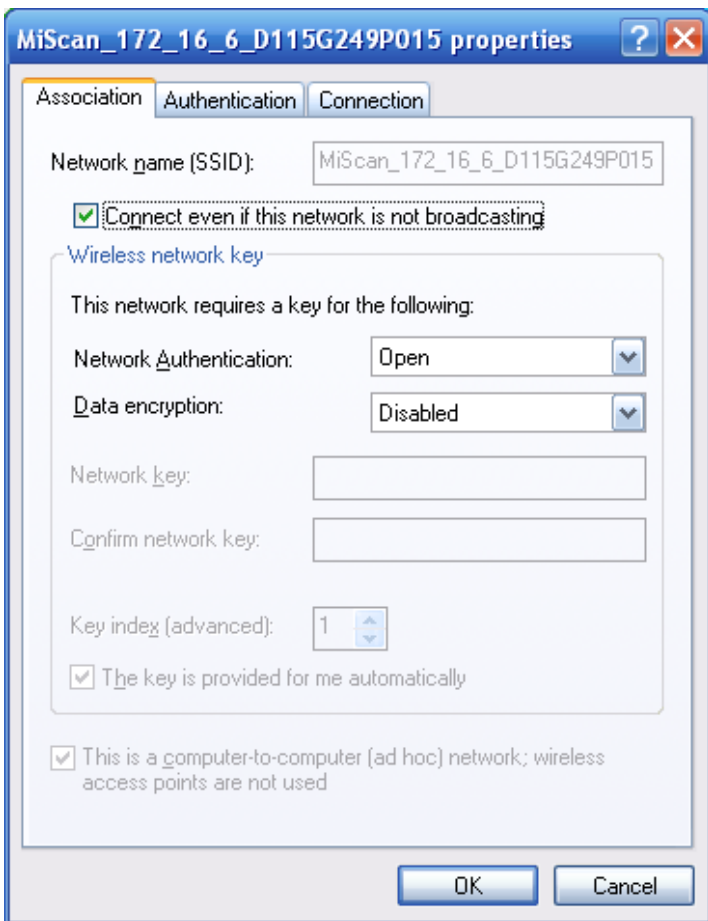
below( Miscan\_172\_16\_6D115G249P).



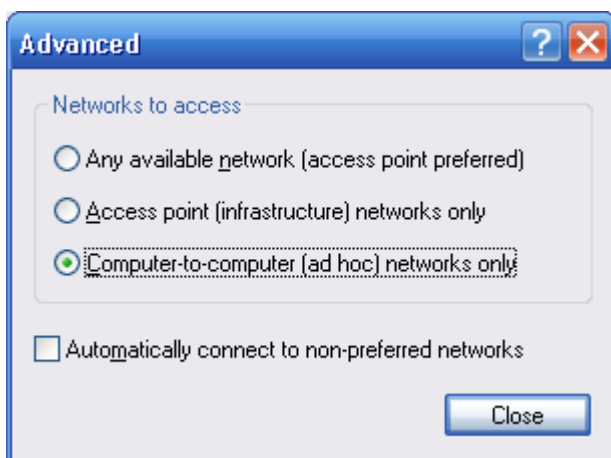
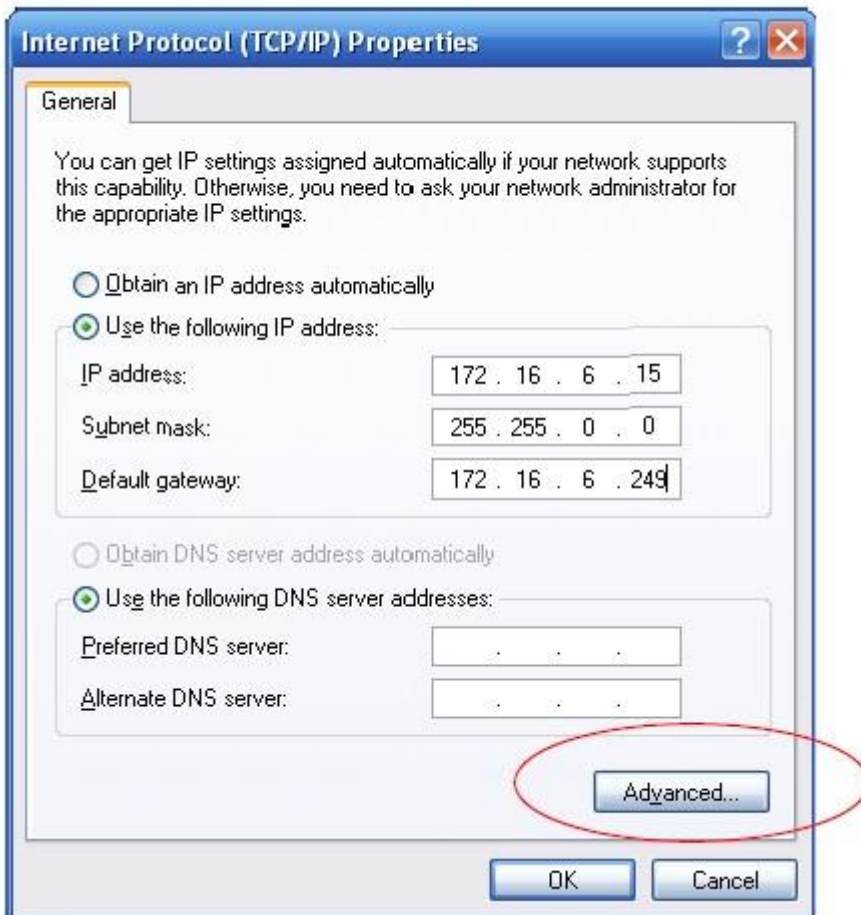
10, Then Click “Properties” button which is placed on the bottom right of the item list box.



11, Setting the” Internet Authentication” and “Data encryption” as follows, and then Click “OK” button.



12, On the “Wireless Network” tab under the “wireless Network Connection Properties” window, Click “Advanced” Button on the bottom right of the item list box., and then setting as follows. Click the “Close” and “OK” button.



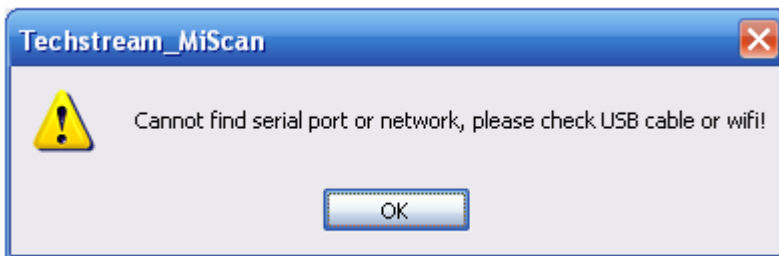
## 4.2.2 Problems might be met when Wifi Setting and the ways to solve .

- 1, Warning during setting Wifi.



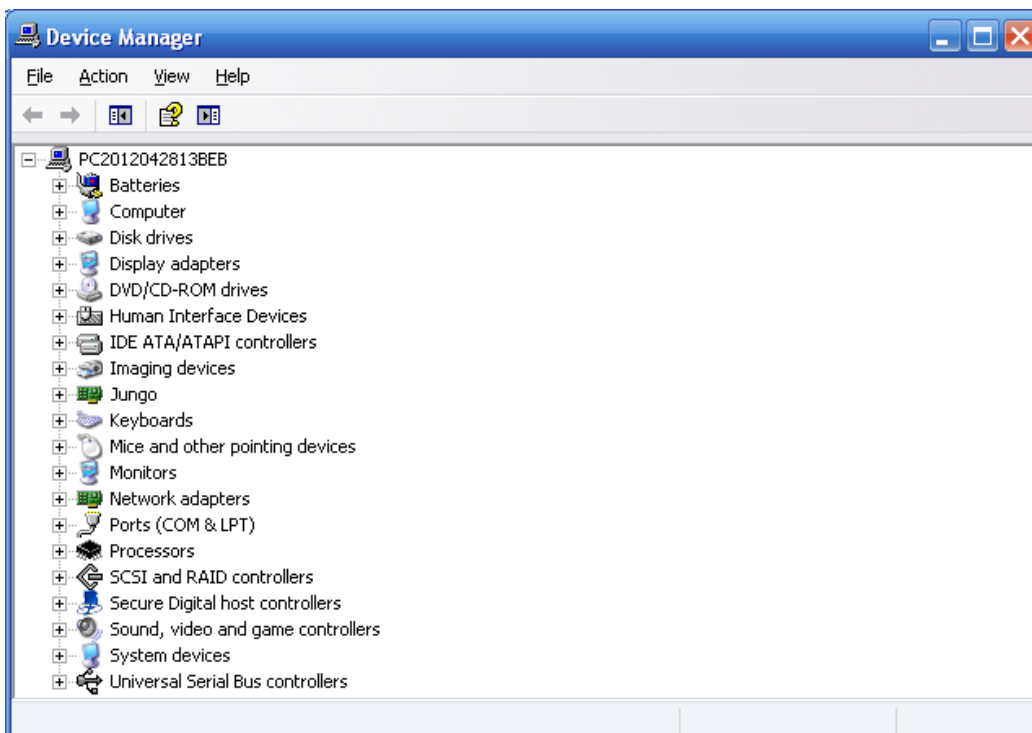
### Warning!

When running the program that appears the following hints, please try to check if the USB Cable is connecting well or wifi is connected well.

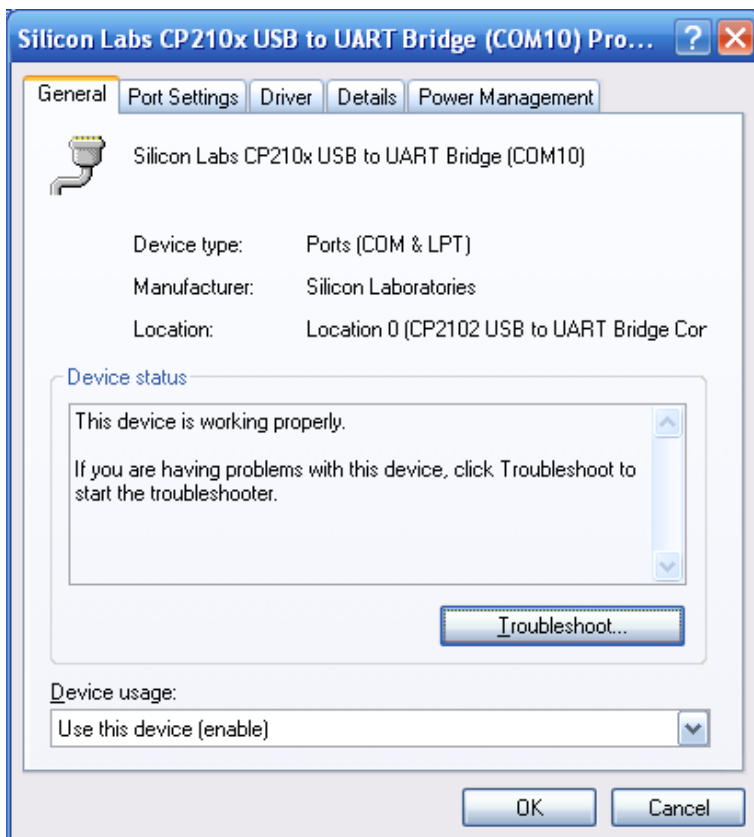
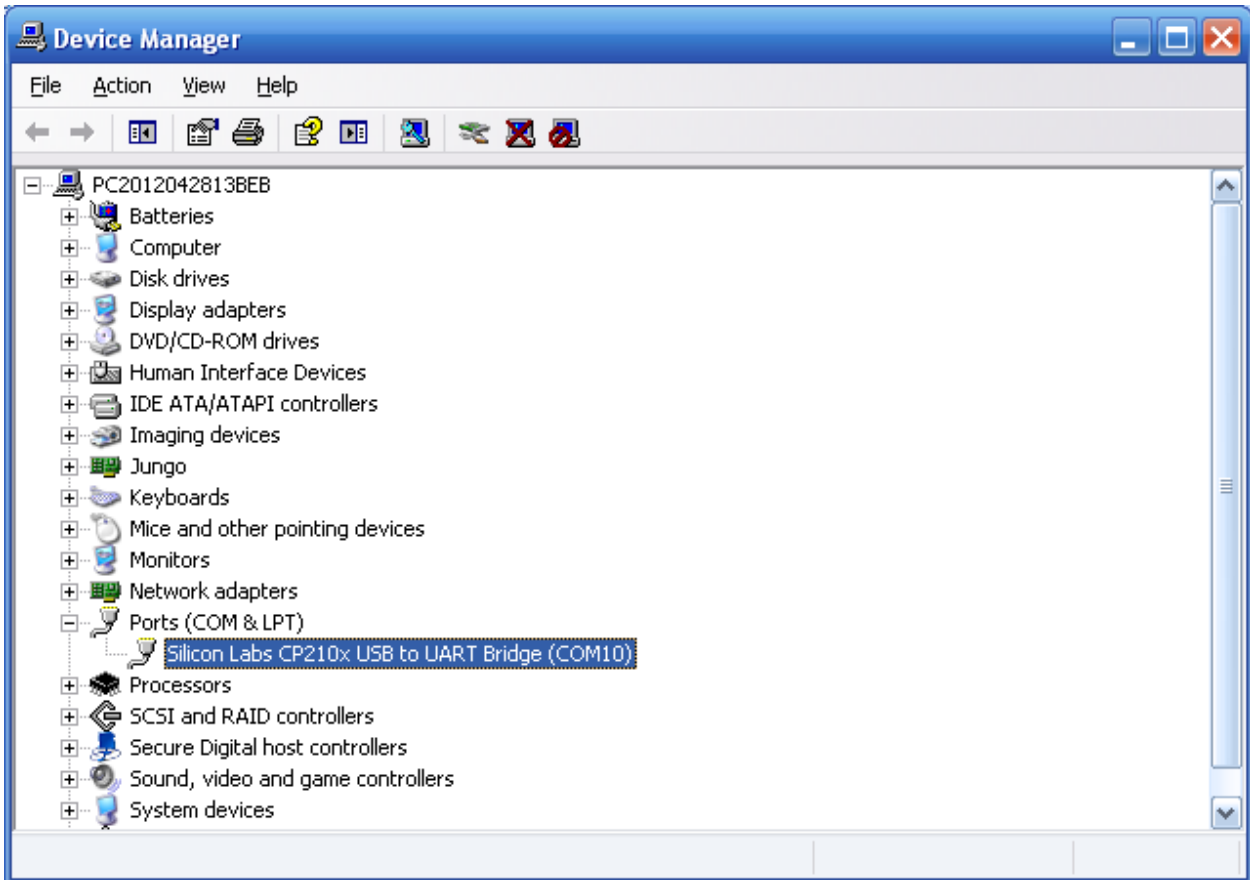


## 4.2.3 The ways to modify the COM Port.

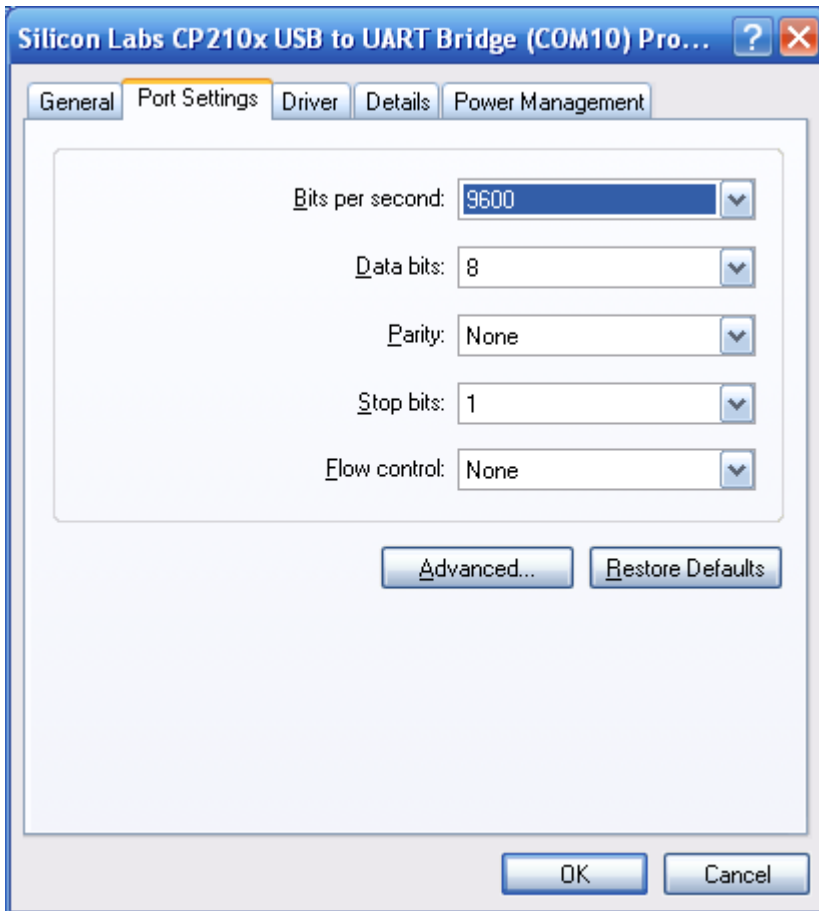
- 4.2.3.1 Click {**Start**} button, and then choose {**run**} button, input {**devmgmt.msc**}, Open {**Device Manger**}



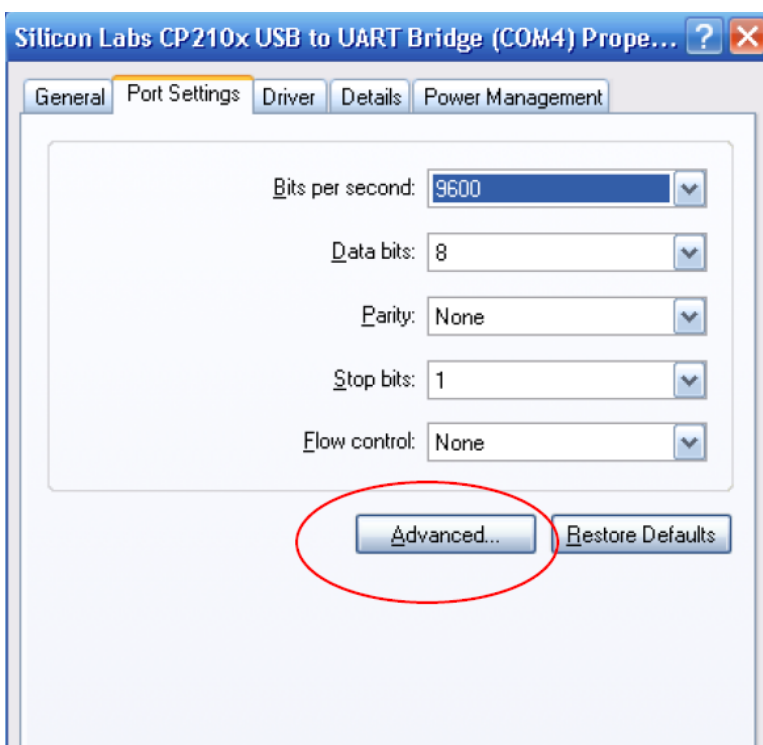
4.2.3.2 Click **{Ports}** button, Selected the seial ports number that need to modified, then doubal click or right click, choose {properties}

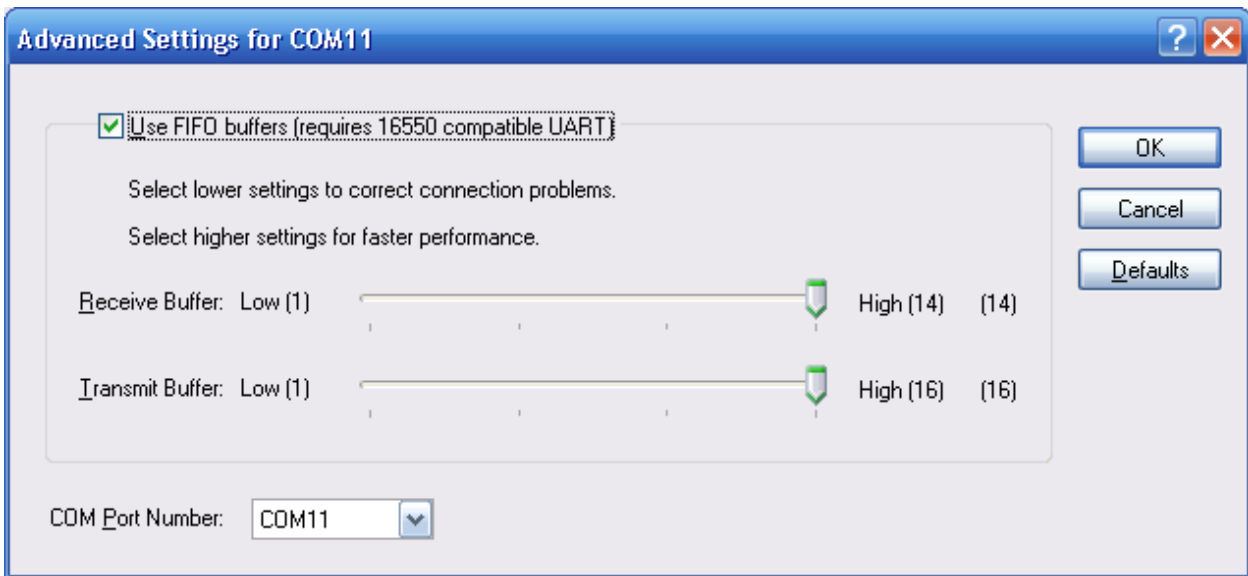


4.2.3.3 Right click “Silicom Labs CP210X USB to URAT Bridge” or “VCP” Port, and Click”Properties” and then go to “Port Setting” Tab.

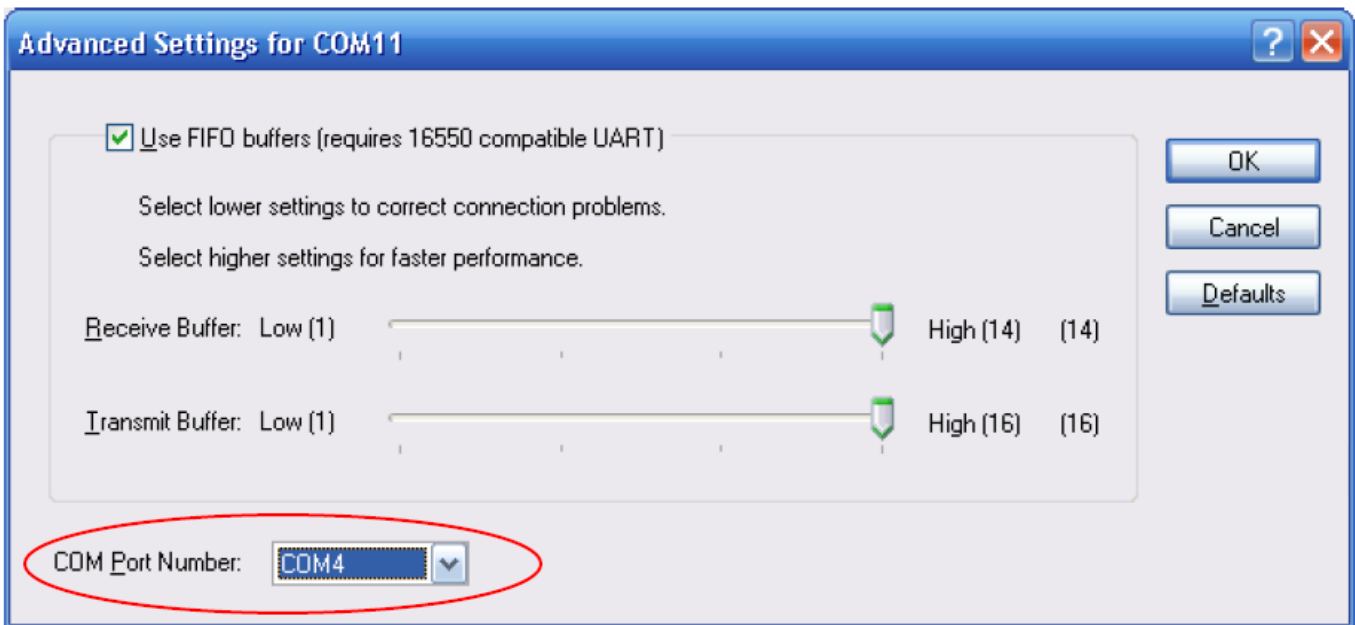


4.2.3.4 Click “Advanced” Button






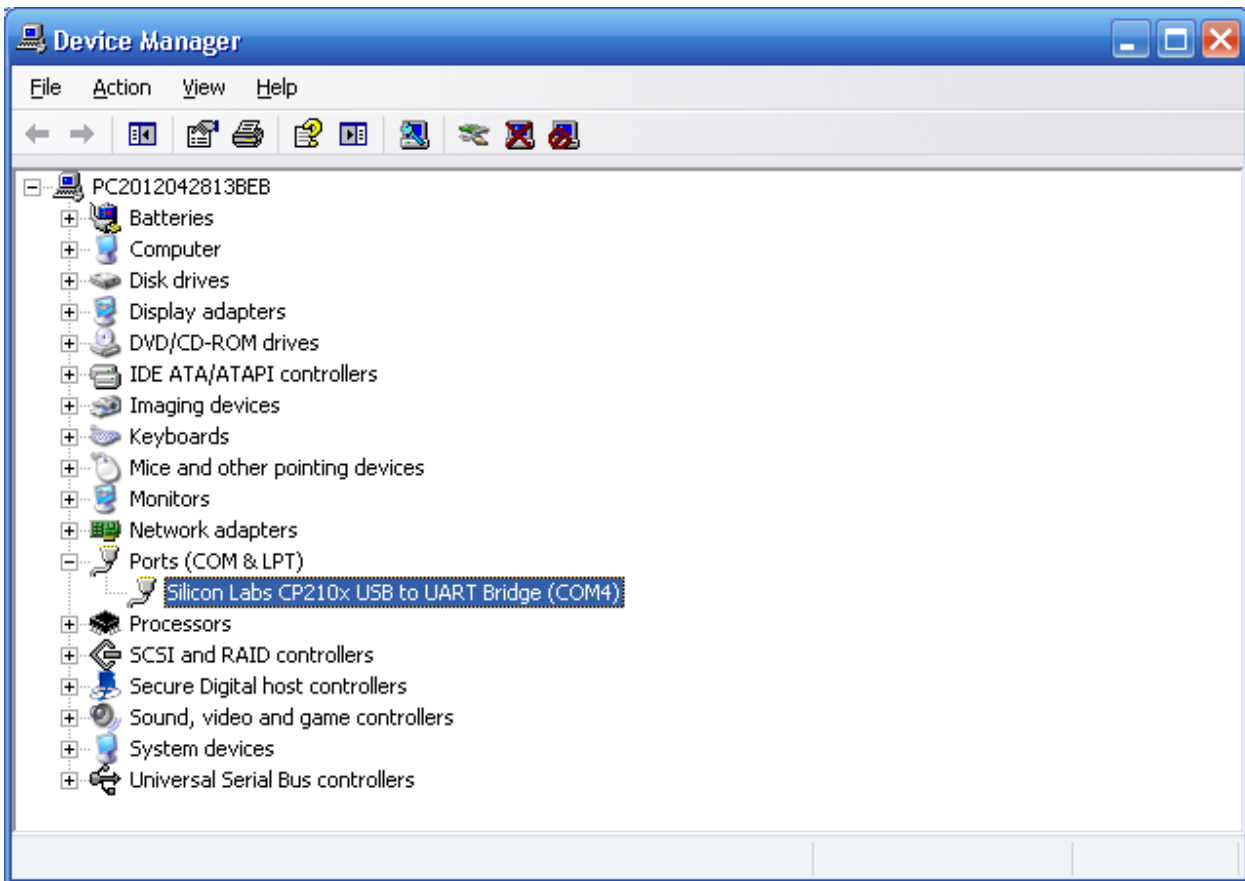
4.2.3.5 Modify “COM Port Number” to less than 10.



4.2.3.6 Click “OK” Button and complete modifying.



4.2.3.7 Click  the button on the top of the window, and get the result after modifying.



## 5 Using OEM Original Software

### 5.1 Take using Toyota Techstream as an Example

Note

Please make sure you have already installed the Toyota Techstream software in the laptop already. The OEM Toyota Techstream software can be found on the CD in the package.

**5.1.1 Double-click the {Techstream} shortcut in the desk, to run the software**



**5.1.2 If connect successful, it can read the hardware version information and hardware ID.**



**5.1.3 After few seconds , it will run the techstream software.**



**5.1.4 If appears other presentation, please operate according the clew or contact us directly.**

**5.1.5 Other OEM original software running ways is also the same as Toyota TIS.**

## 6.Solutions during installing

If the computer can not start up after install the programm, the followings ways are to solve the problems:


When start up the computer and enter into the staring up screen, press “F8” button and waiting the screen appearing the setup button,then choose “ ( Last Known Good Configuration (your most recent settings that worked))”.When you choose this setup button, it means your computer can not run this version software.

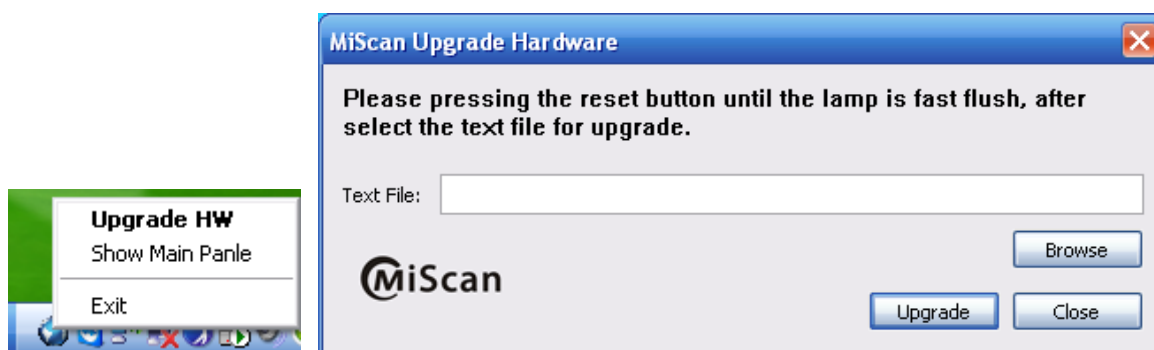
## 7.Upgrade

### 7.1 Software Upgrade

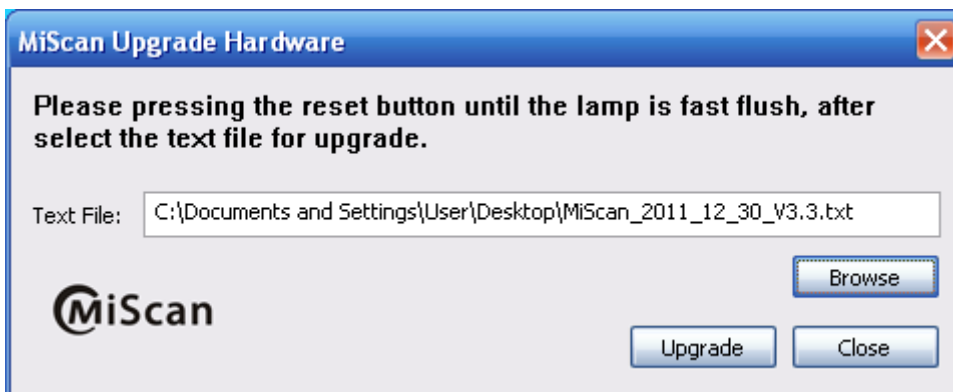
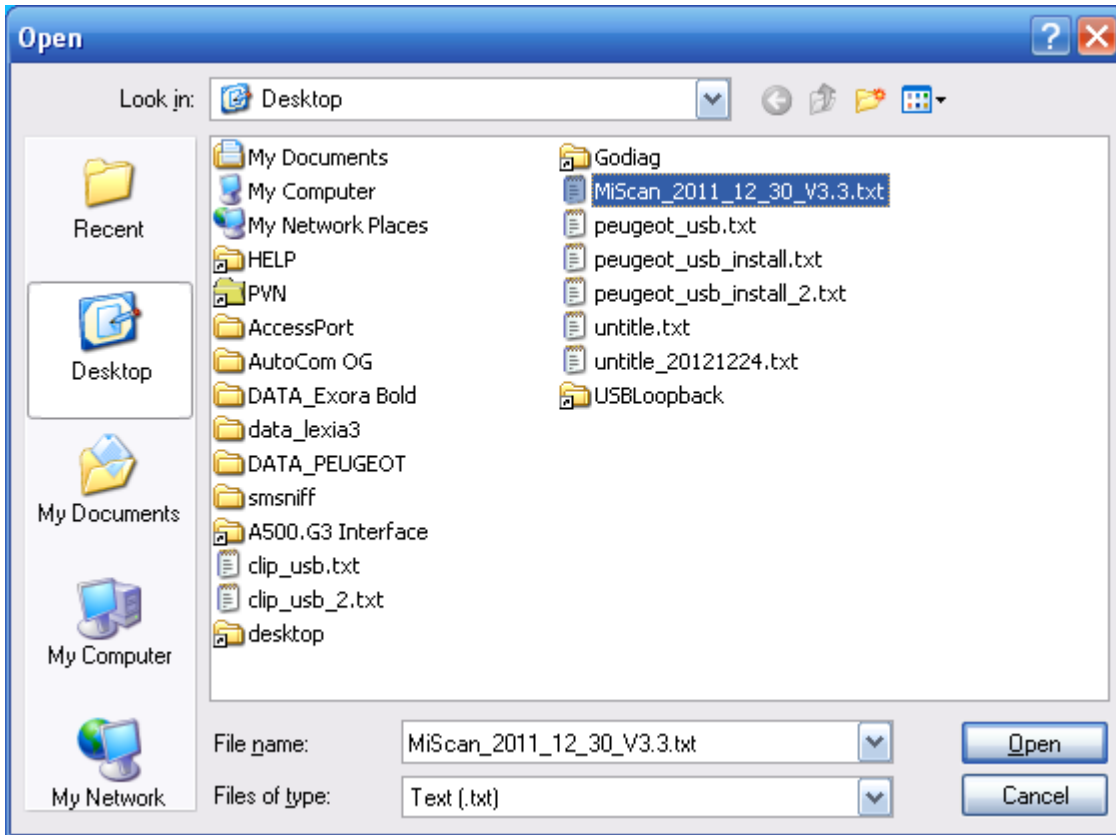
Please to contact the seller to get the latest software and update information or download the latest software from the website.

### 6.2 Hardware Upgrade

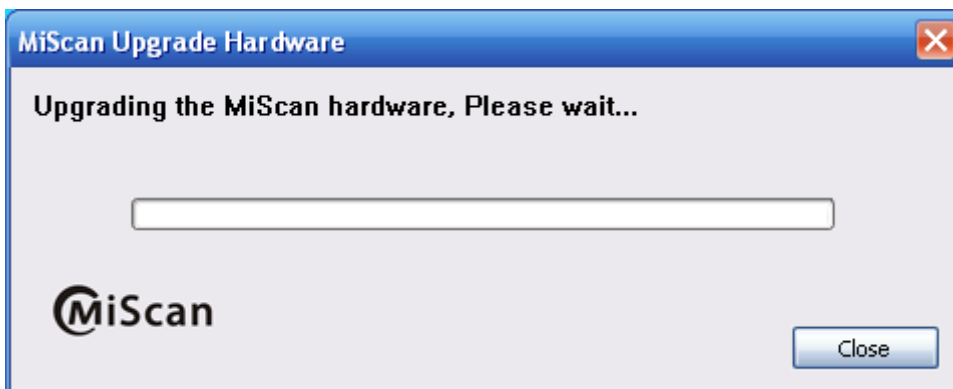
1, Find the Miscan software Icon in the Task bar,  and then right click the menu, then choose Upgrade HW to open the upgrade dialog box.



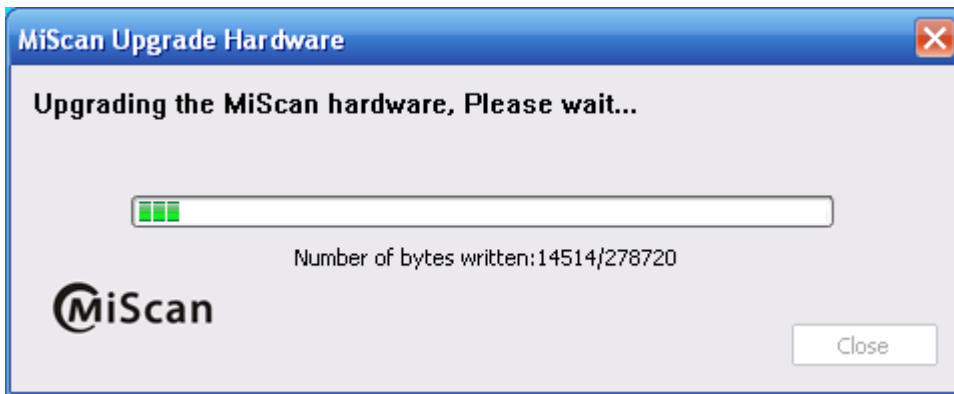
2, Please make sure the Miscan hardware in the update state according the presentation, then choose the update file.



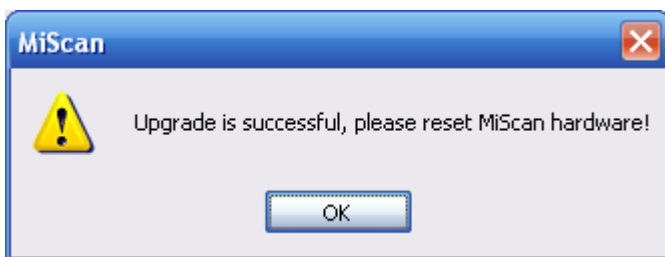
3, Click the {Update} button to starting update.



#### 4, Upgrading the Miscan hardware



#### 5, When upgrade it successful, please reset Miscan hardware.



## 7. Maintenance and Service

### 7.1 Limit Range of Maintenance Service

1. Problem caused by the quality of the machine in correct use can be partially solved by Miscan Company during the guarantee time.
2. When there is problem on our instrument, contact the distributor directly. Miscan Company has after sales engineers in each big and middle city in our country through strictly select and excellent training, which will offer high efficiency and good quality service.
3. Guarantee time refers to the period Latest Company sells the product. Detailed guarantee information consult system record of Latest Company.
4. Users keep the guarantee card and purchasing voucher distributor open when sell instrument carefully. When the instruments need to be repaired, the vouchers mentioned above are

regarded as guarantee proof.

5. Register the instrument in time. Guarantee time start from the register date system record.
6. Repaired instrument still enjoy maintenance service in warranty time. If warranty time will be end in three months, replaced spare parts enjoy three-month maintenance since replace.
7. Spare parts replaced in maintenance period belong to Miscan Company.
8. Users should take responsibility for the safety of data. Before maintenance, users backup the data and program automatically. Miscan Company and our distributors don't take any responsibility for destruction or loss of data, program or memory medium.

## **7.2 Out of Guarantee Range**

1. Technology problem of non-hardware
  1. Users replace components by themselves or the components not belong to Godiag and they don't buy from Miscan or our distributors.
  2. Consume material (such as instrument appearance, natural consume and aging caused by inserting and taking out components)
  3. Trouble and destruction caused by wrong installation, operation (for example, pull out data cable with electricity), or work condition which is not suitable for instrument(such as too high or too low temperature, too humidity or dryness, too high altitude, unstable voltage or current, ground voltage too big )
  4. Destruction caused by accident, abuse (including excess working load), misuse.
  5. Destruction caused by keeping improperly, such as rat scourge, liquid in leakage.
  6. Destruction caused by using self-program or non-publicly publishing software.
  7. Computer virus infected by improper maintenance.

8. Trouble and destruction caused by installation and using non-standard extension card.
9. Trouble and destruction caused by removing and repairing without technical people's advice or self-changing or abusing.
10. The trouble or destruction caused by human beings or natural disaster.



**THANKS FOR USING MISCAN PRODUCTS!**