

- (GB)** Fitting instructions for : **Rear view camera**
- (D)** Einbauanleitung : **Rückblickkamera**
- (F)** Instructions de montage pour : **Caméra de vue arrière**
- (NL)** Montagehandleiding : **Achteruitzichtcamera**
- (E)** Instrucciones de montaje para : **Cámara de visión trasera**
- (S)** Montageanvisning för : **Bakåtriktad kamera**

**Partnumber : MZ313955**

Application:			
Model Name	Model Year	Body	Model Serie
Pajero	2007 ->	LWB/SWB	V80/V90

**(GB)** Read this mounting manual carefully, before you start the installation. Warranty is granted only when installation is done by your Mitsubishi dealer. Modification related to design, construction, illustrations and text are reserved.

**(D)** Bitte sehen Sie diese Einbau-Anleitung gründlich durch bevor Sie mit der Montage anfangen. Garantie wird nur gewährt wenn der Anbau von einem Mitsubishi Händler ausgeführt worden ist. Änderungen hinsichtlich Ausstattung, Konstruktion, Abbildungen und Text Vorbehalten.

**(F)** Lisez cette notice de montage soigneusement avant l'installation. Une garantie est seulement délivrée si l'installation a été exécuté par un commerçant de Mitsubishi. Sous réserve de modifications de projet, construction, illustrations et texte.

**(NL)** Lees deze montagehandleiding door alvorens U tot installatie overgaat. Garantie wordt alleen verleend indien de installatie is uitgevoerd door een erkende Mitsubishi handelaar. Veranderingen ten aanzien van ontwerp, constructie, afbeelding en tekst voorbehouden.


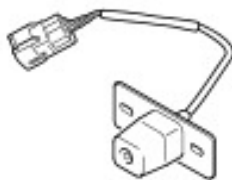
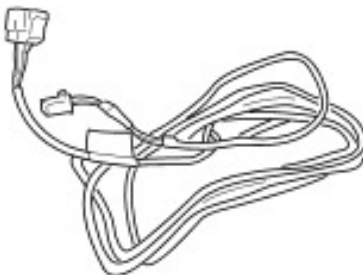




**(E)** Lea por tanto con atención este manual (folleto) ante de que la instalación comienza. Garantía es válida solamente si la instalación de este producto fue instalada por medio de una Mitsubishi distribuidora autorizada. Cambios en proyecto, construcción, retrato y texto son prohibidas.

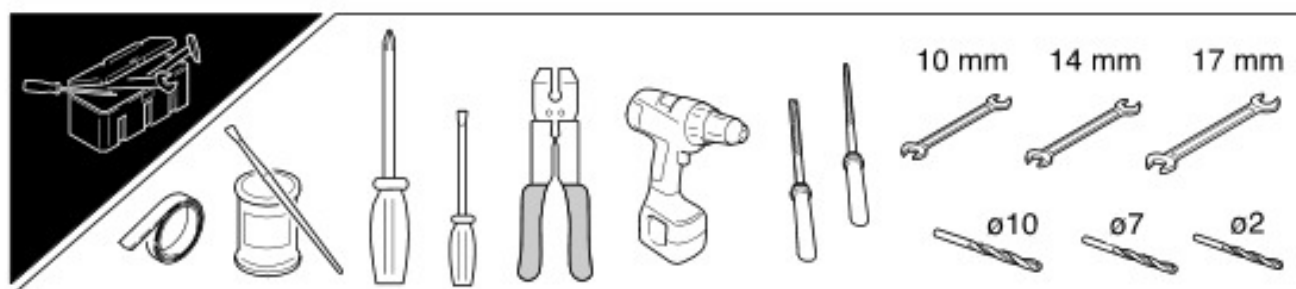
**(S)** Läs noggrant igenom denna monteringsanvisning innan du börjar Installations-arbetet. Garanlin gäller endast då installationen är utförd av en auktoriserad Mitsubishi-återförsäljare eller är fackmannamässigt utförd. Med reservation för modifieringar gällande design, konstruktion, illustrationer och text.



# Accessory

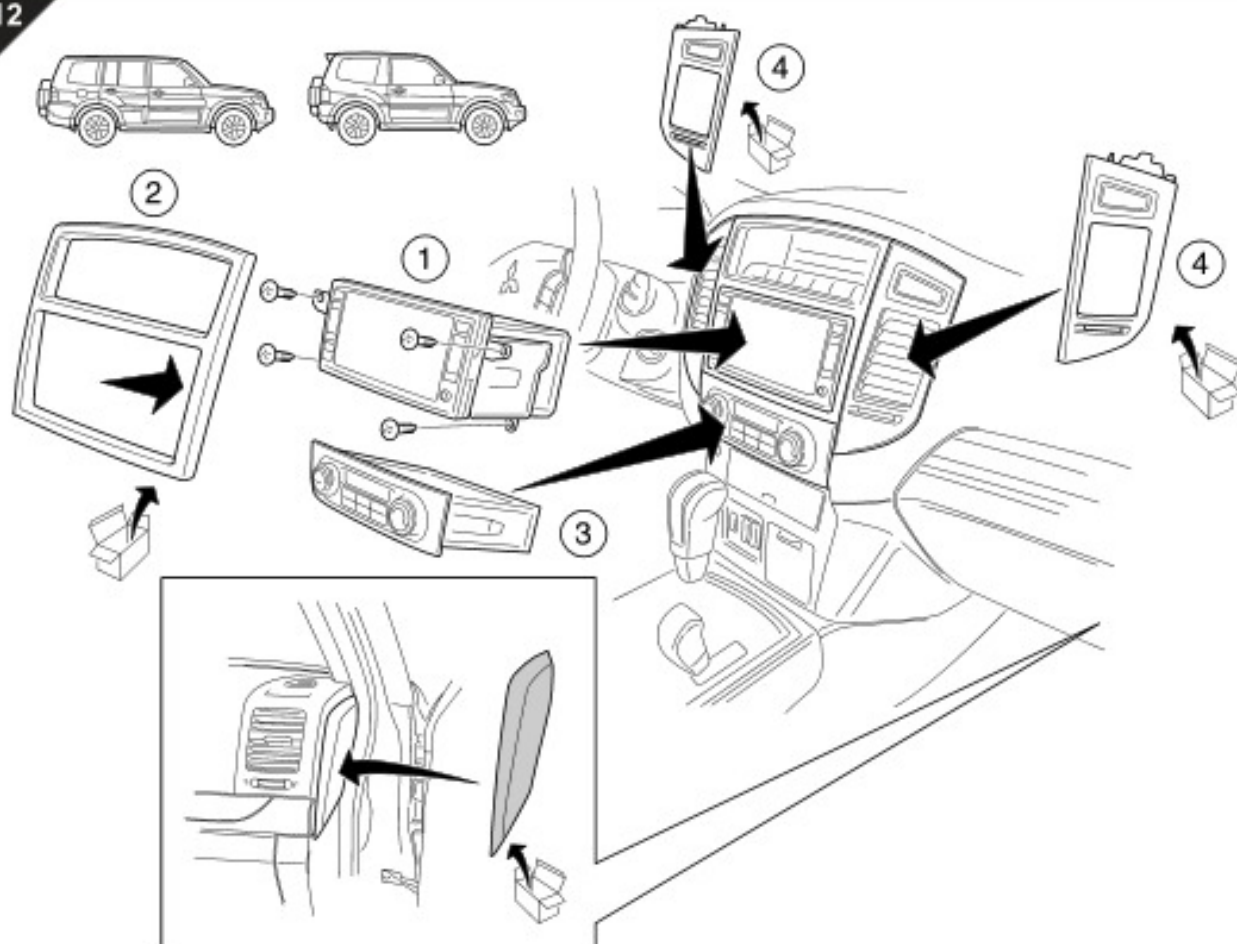


MZ313955				1	●
				2	●
				15x 3	●
				2x 4	●
				2x 5	●
					

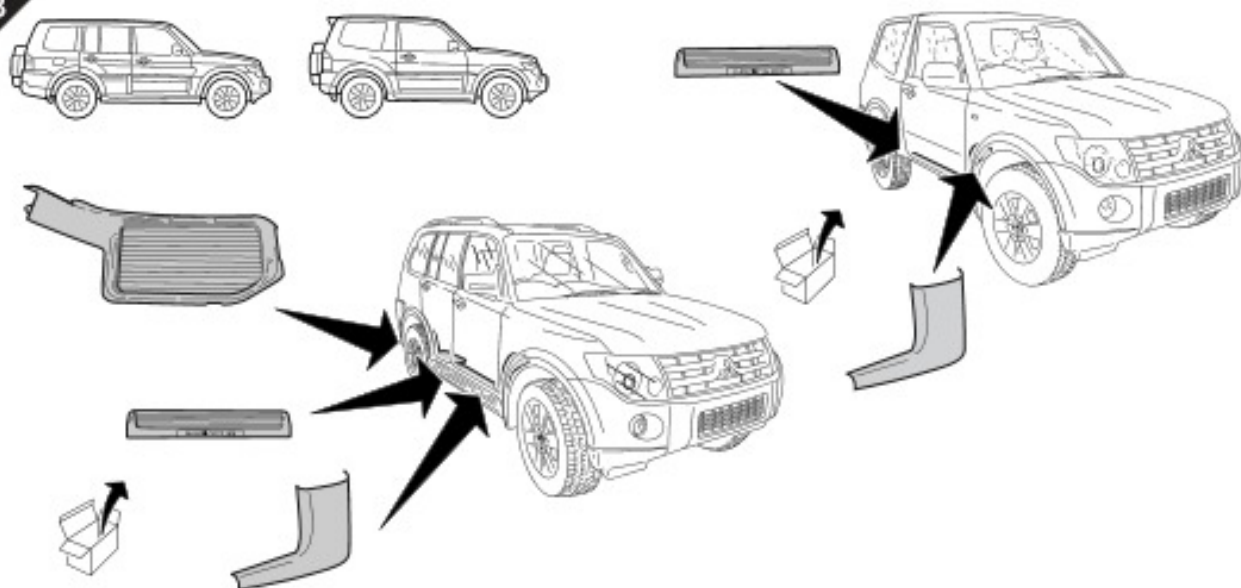




12



13



Partnumber

Issue

Date

Mitsubishi Motors Corporation

Page

MZ313955

01

February 28, 2007

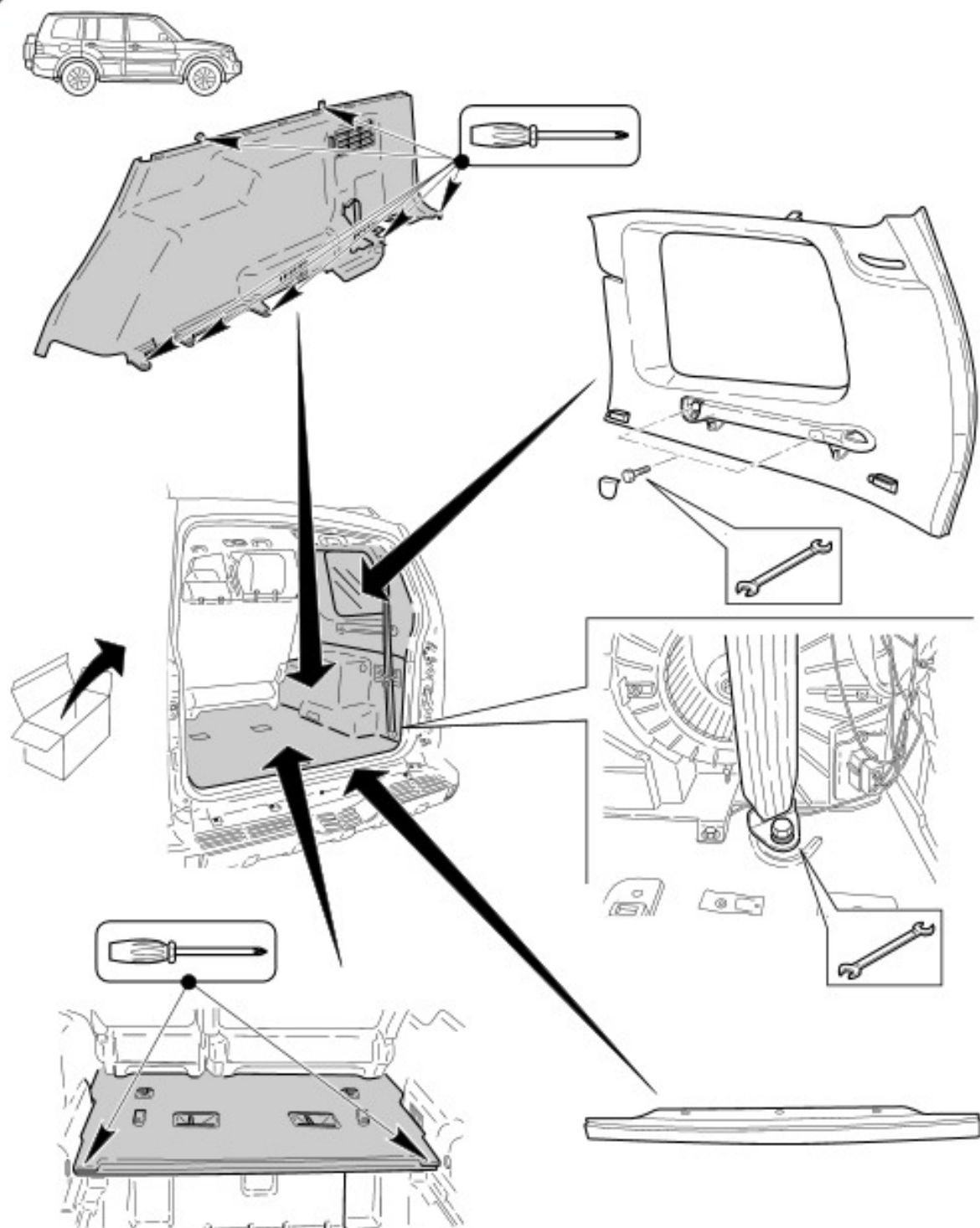
11



## Accessory



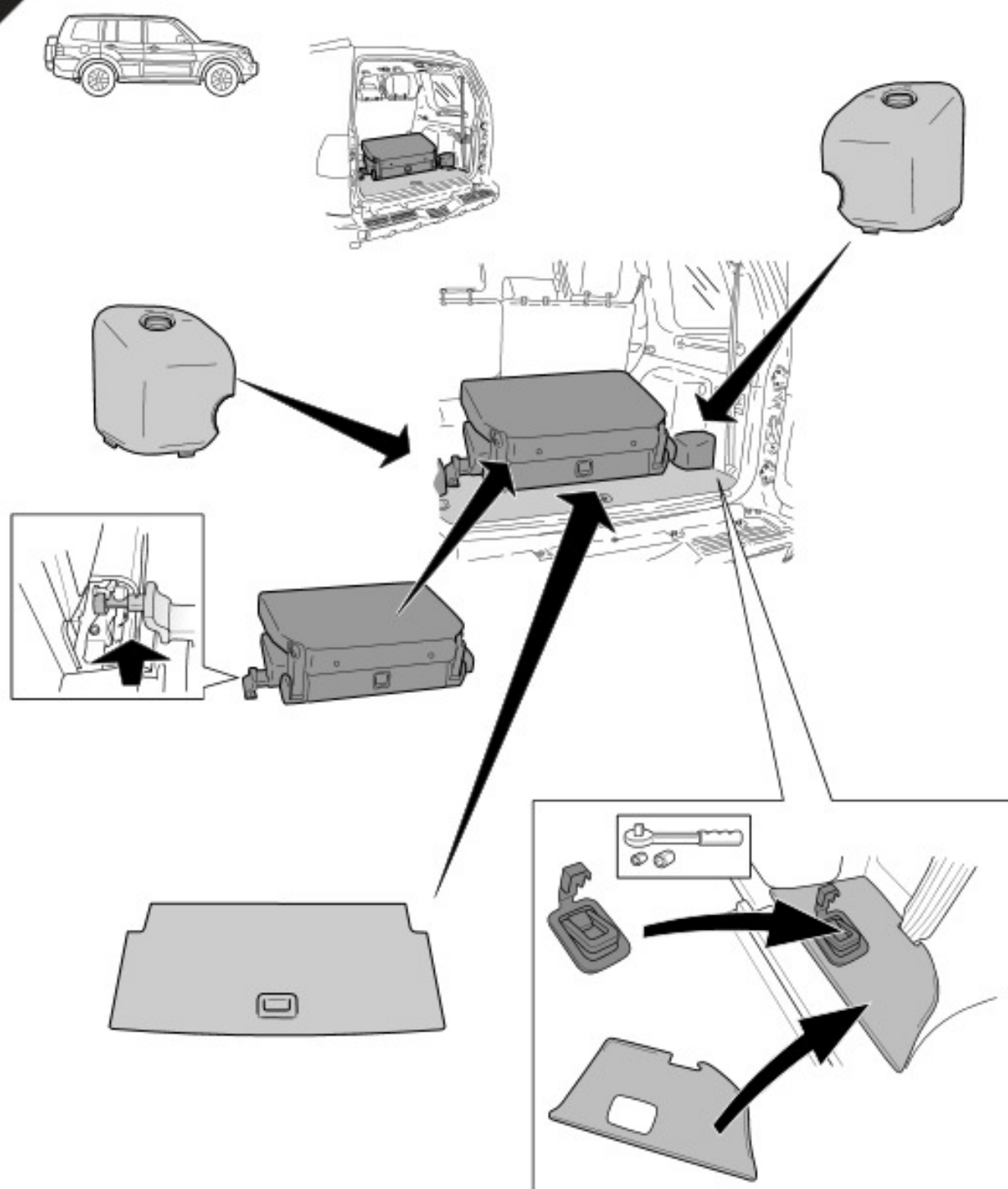
14







15

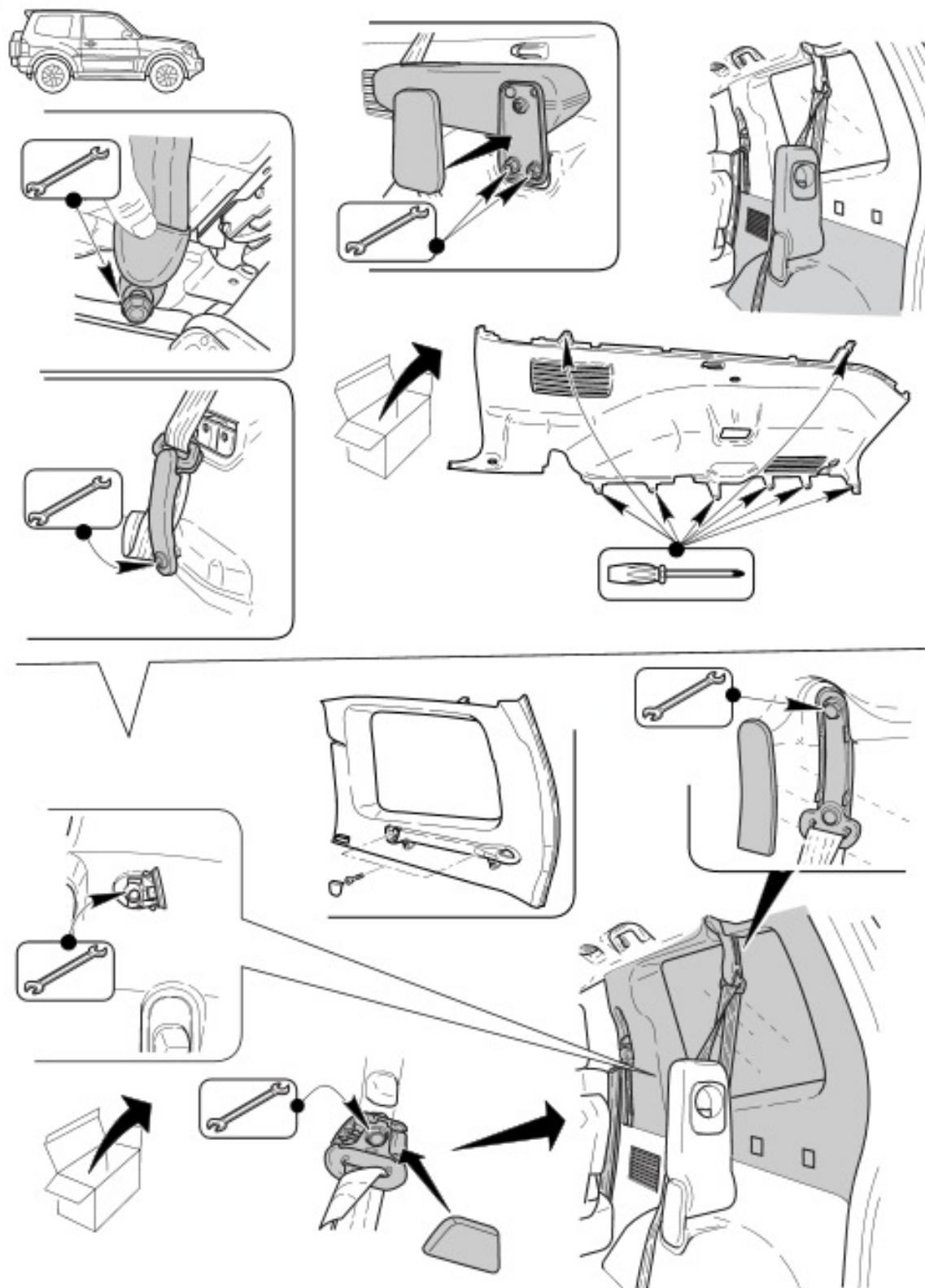




# Accessory

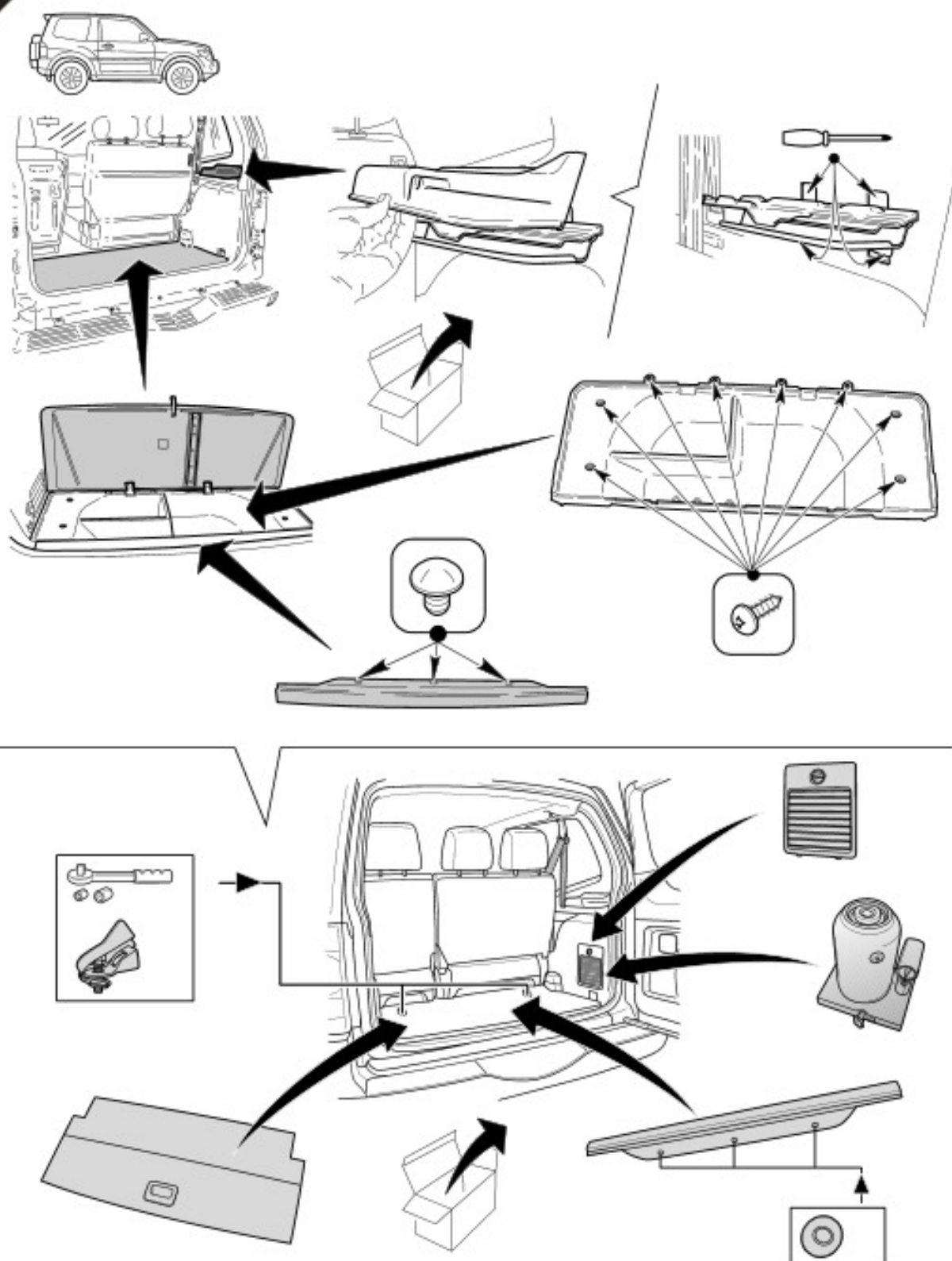


16





17

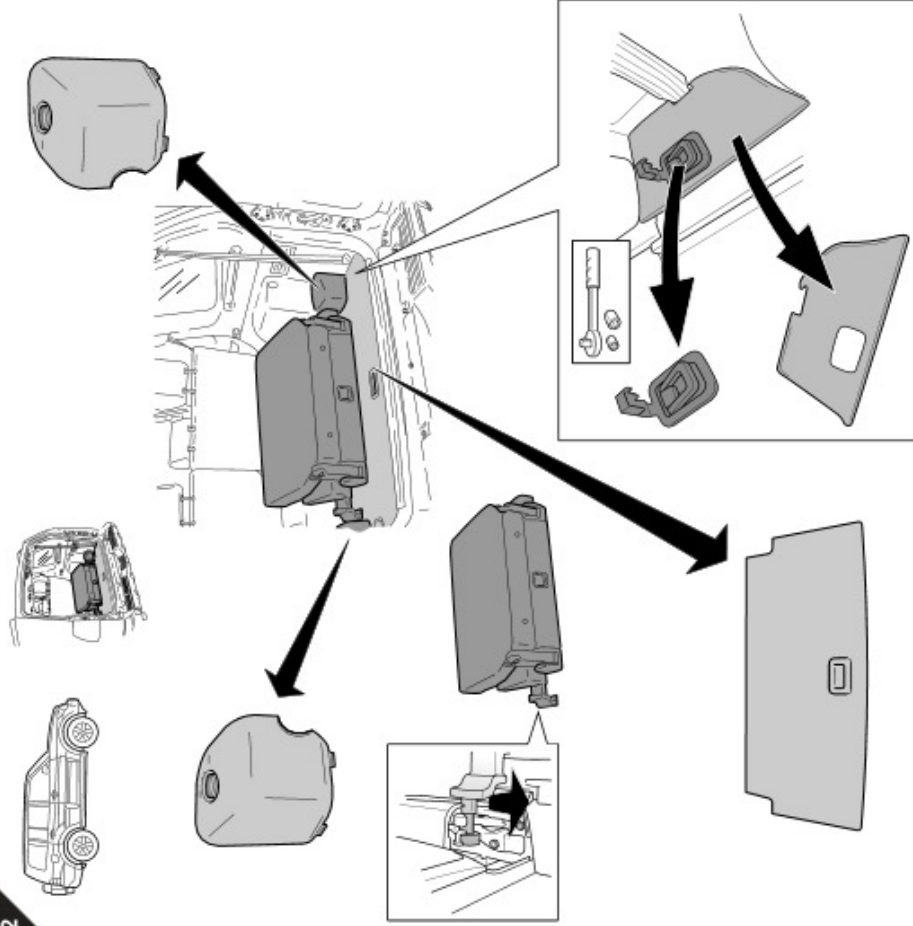




1



2



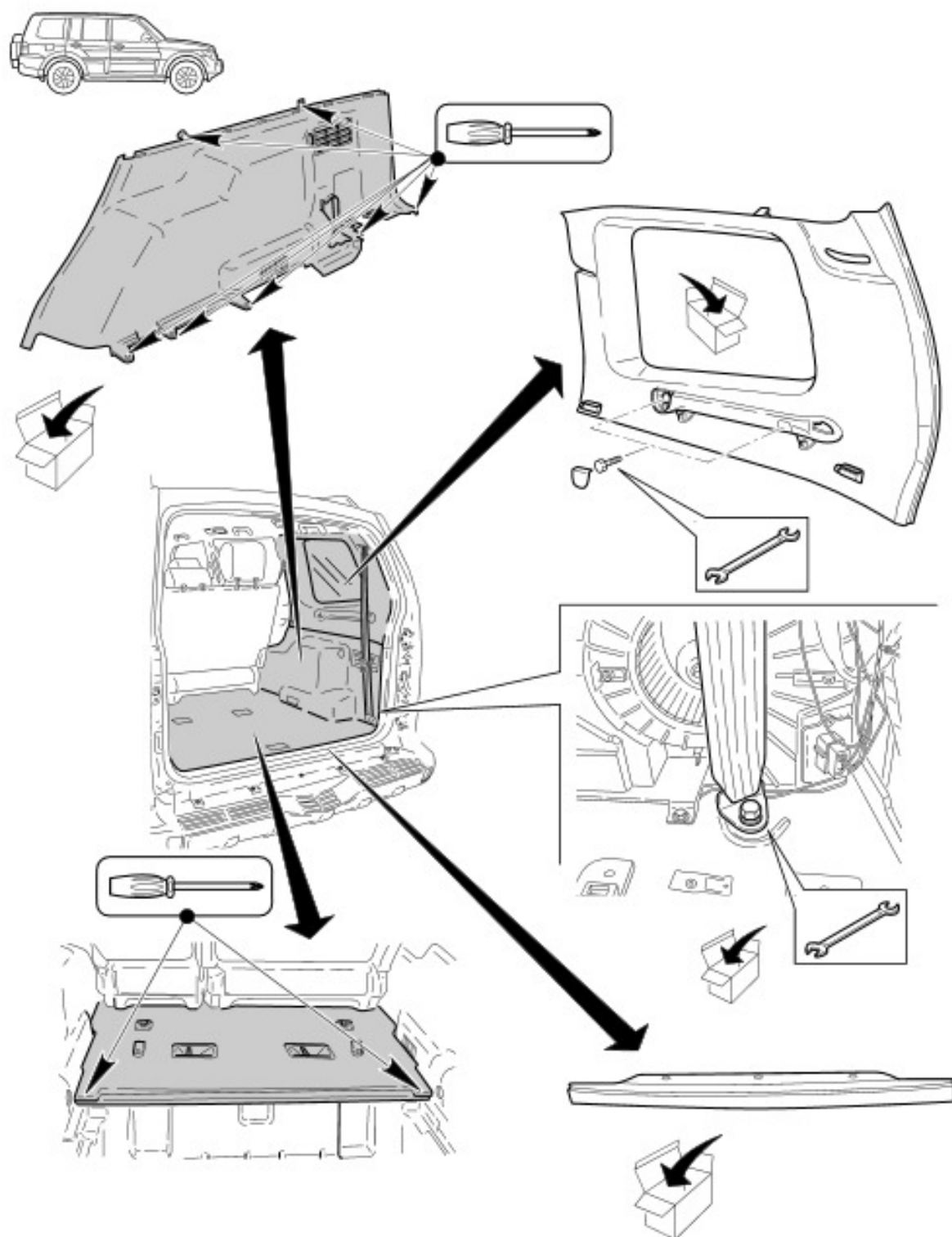




# Accessory

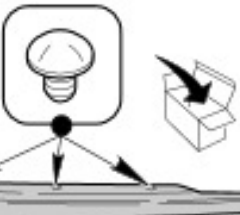
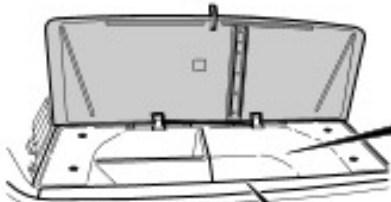
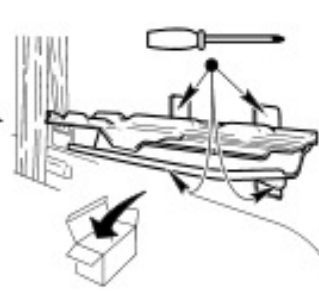
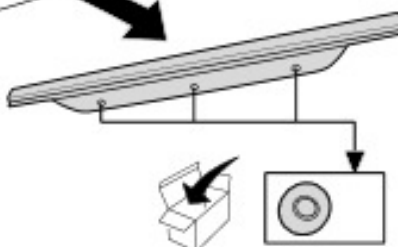
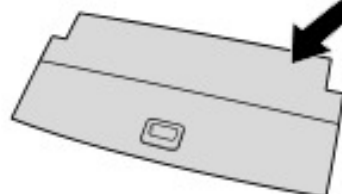


3



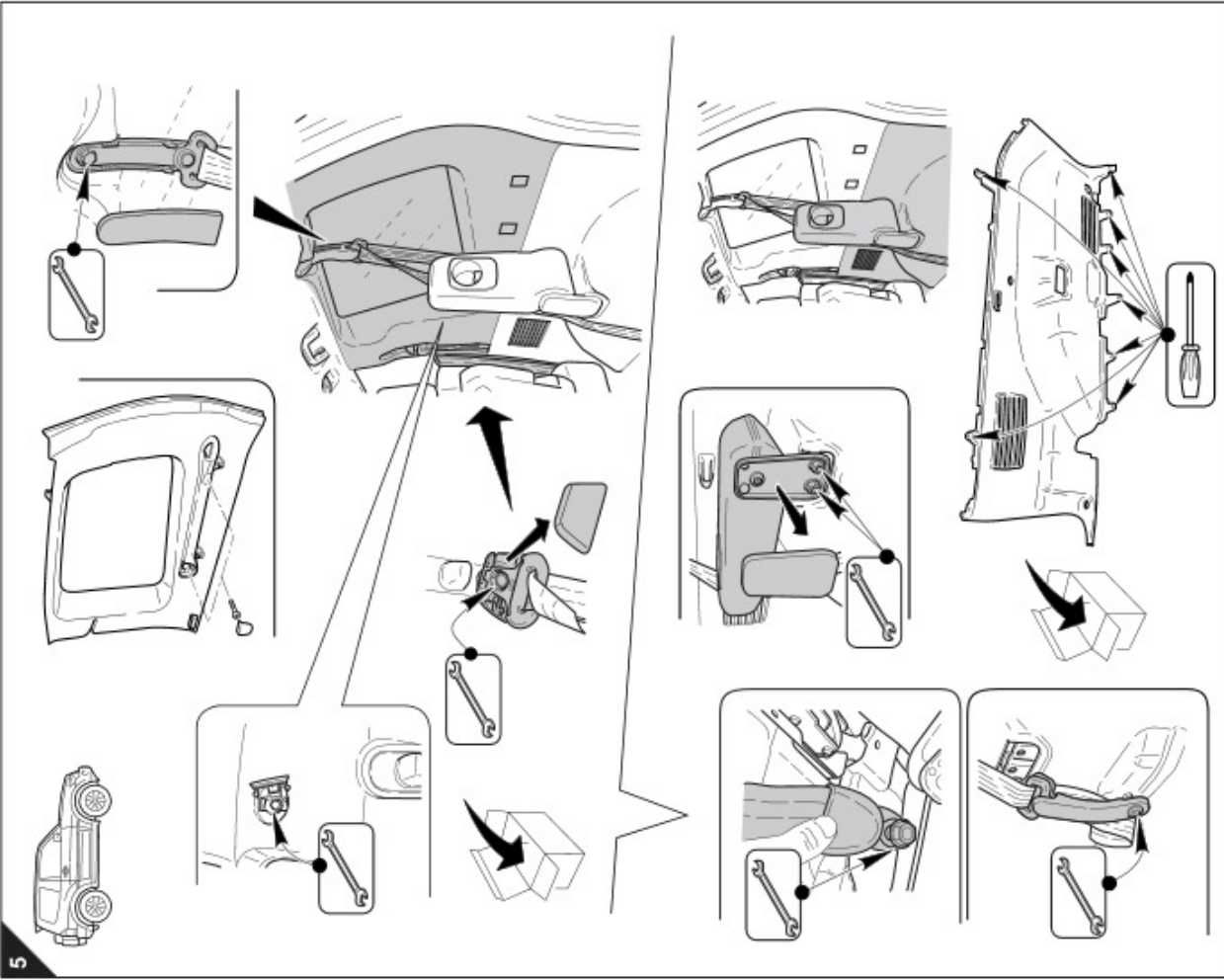


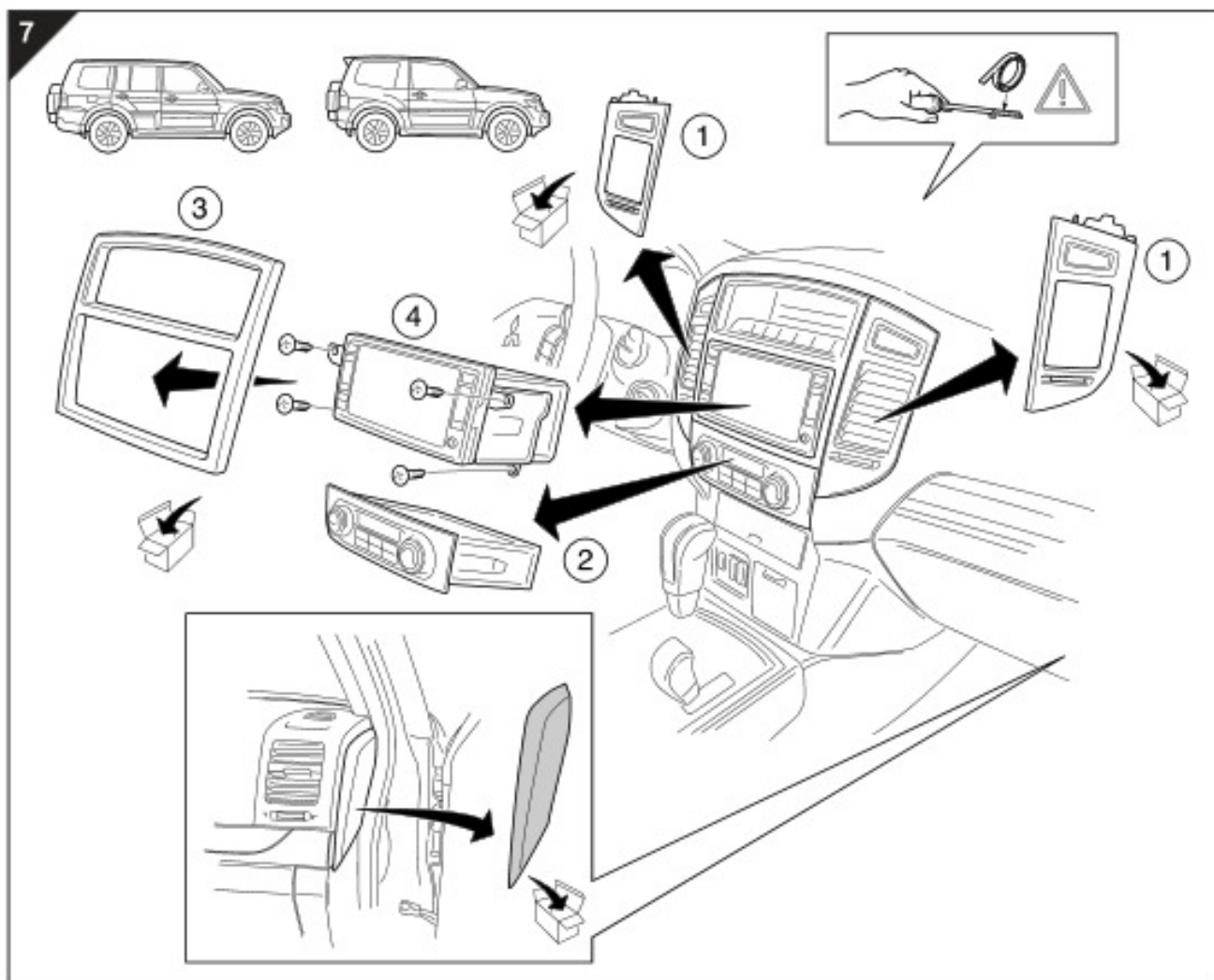
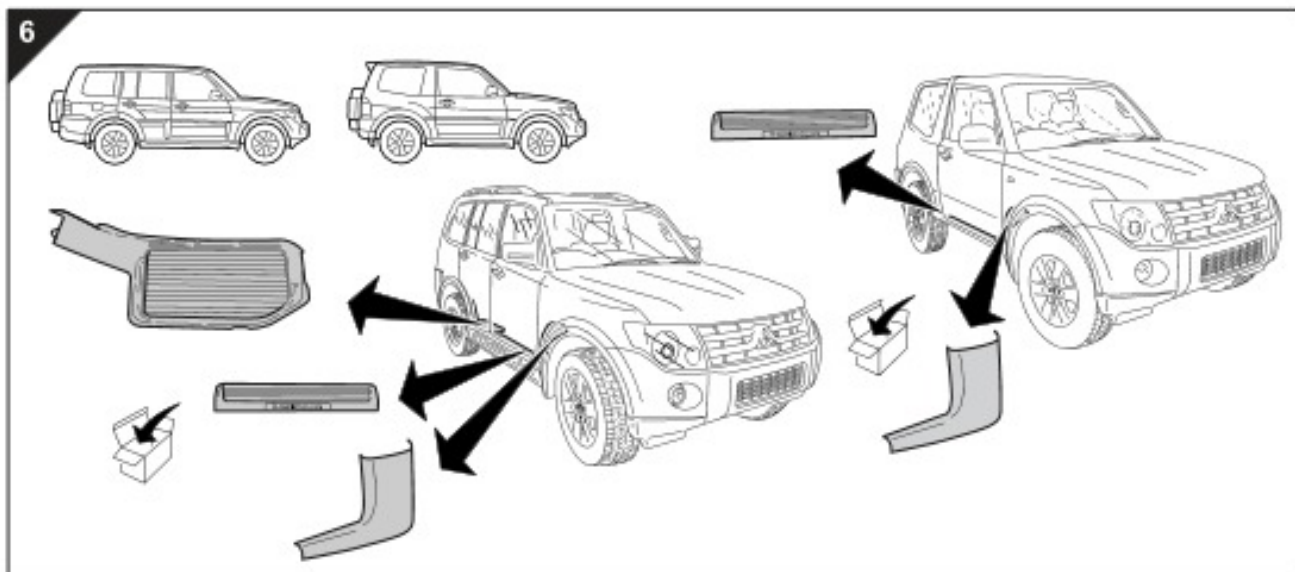
4





## Accessory





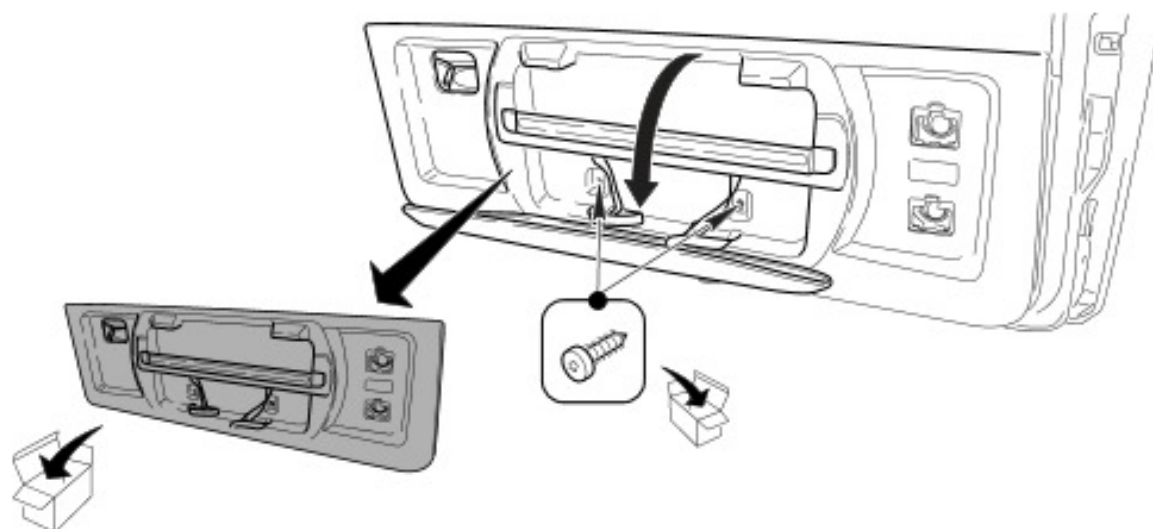
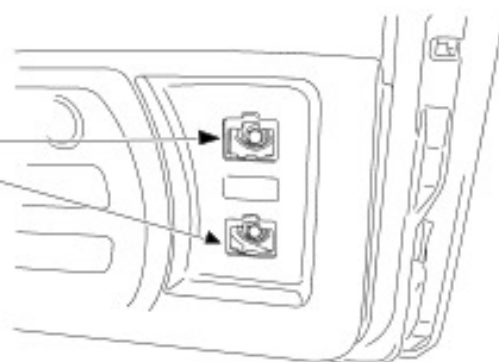
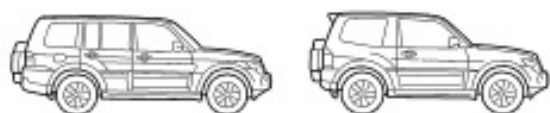




## Accessory



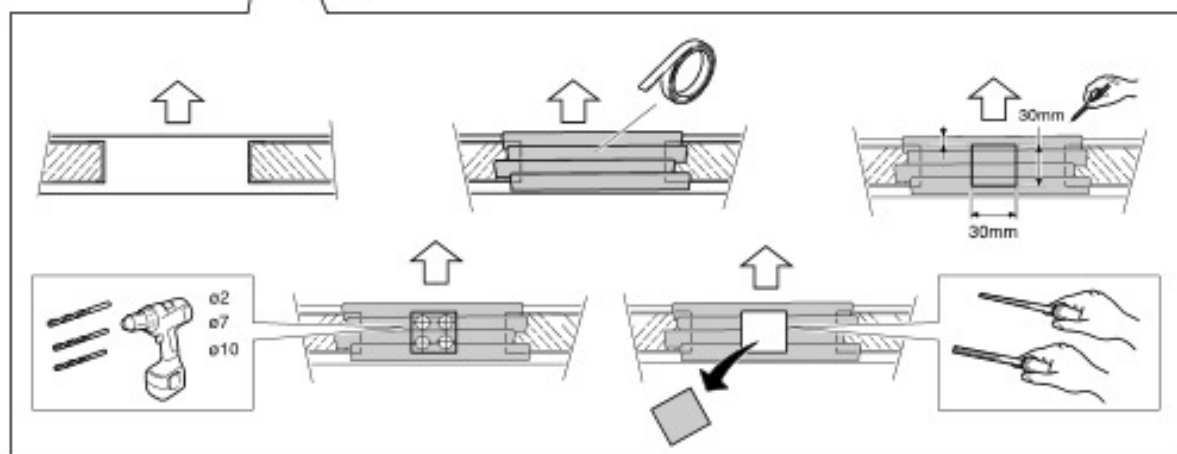
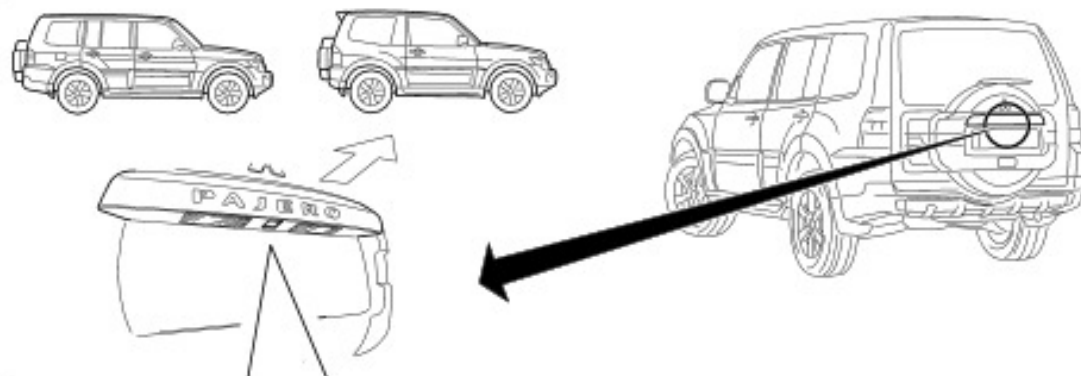
8



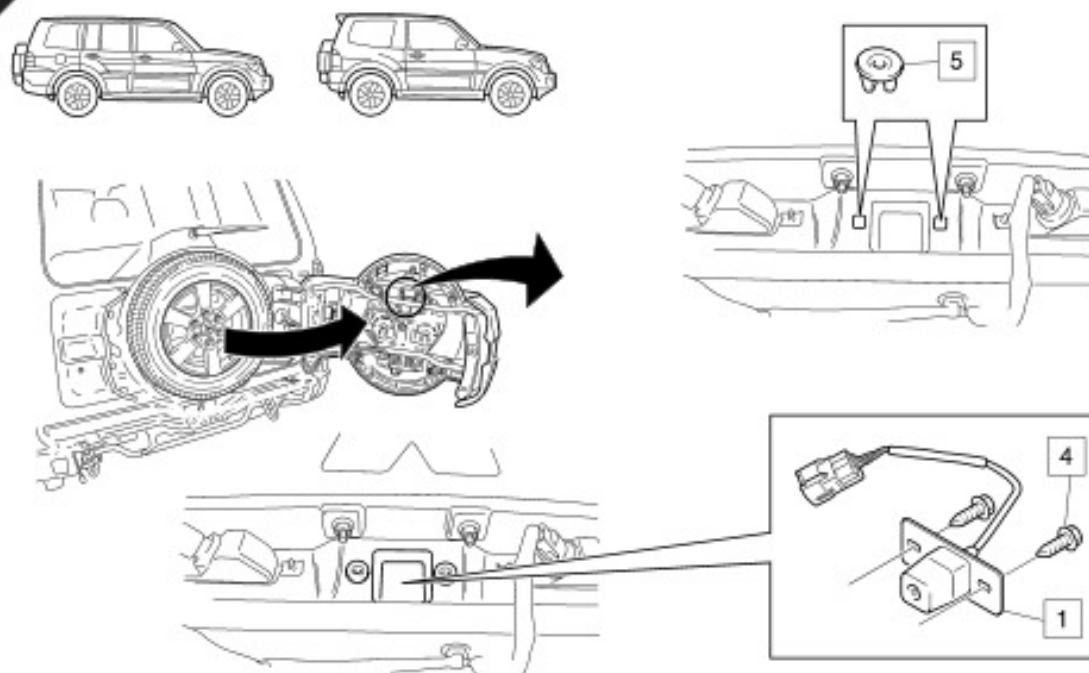




9



10

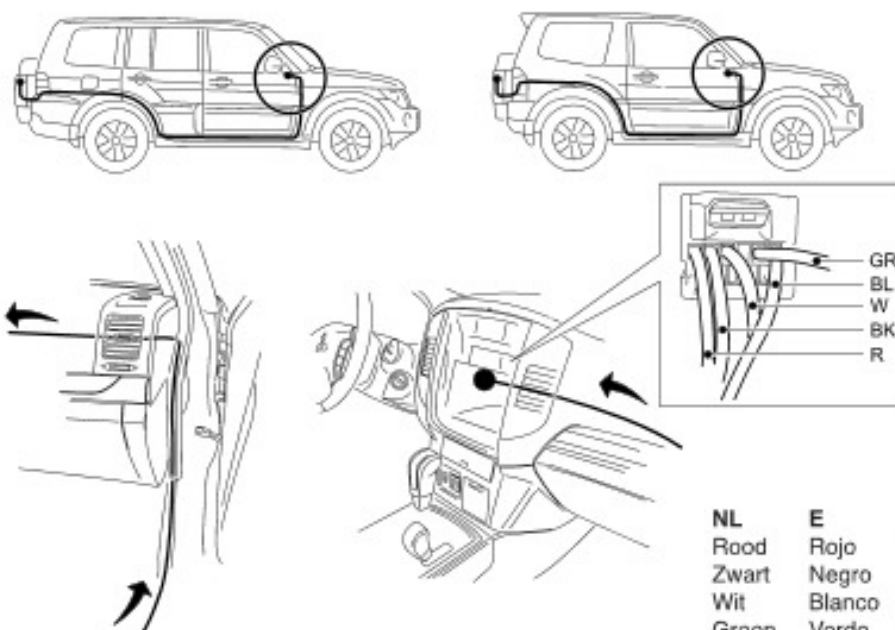
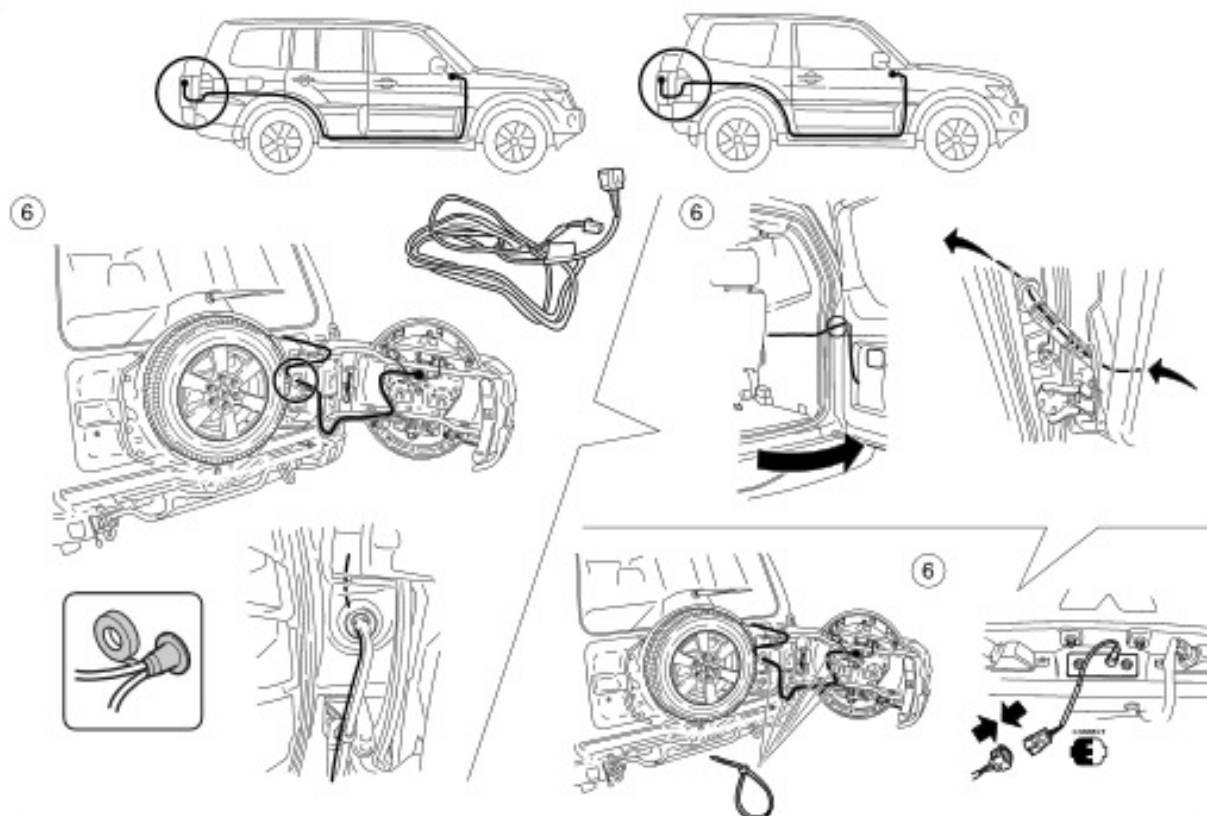




## Accessory



11



<b>GB</b>	<b>D</b>	<b>F</b>
Red	Rot	Rouge
Black	Schwarz	Noir
White	Weiß	Blanc
Green	Grün	Vert
Blue	Blau	Bleu
<b>NL</b>	<b>E</b>	<b>P</b>
Rood	Rojo	Vermelho
Zwart	Negro	Preto
Wit	Blanco	Branco
Groen	Verde	Verde
Blauw	Azul	Azul
<b>I</b>	<b>RUS</b>	
Rosso	красный	
Nero	черный	
Bianco	белый	
Verde	ЗЕЛЕНый	
Blu	голубо	