

- GB** Fitting instructions for : **Rear view camera**
- D** Einbauanleitung : **Rückblickkamera**
- F** Instructions de montage pour : **Caméra de vue arrière**
- NL** Montagehandleiding : **Achteruitzichtcamera**
- E** Instrucciones de montaje para : **Cámara de visión trasera**
- S** Montageanvisning för : **Bakåtriktad kamera**

**Partnumber : MZ313955**

Application:			
Model Name	Model Year	Body	Model Serie
Pajero	2007 ->	LWB/SWB	V80/V90

**GB** Read this mounting manual carefully, before you start the installation. Warranty is granted only when installation is done by your Mitsubishi dealer. Modification related to design, construction, illustrations and text are reserved.

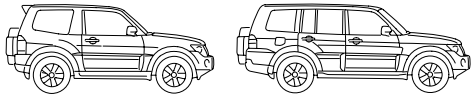
**D** Bitte sehen Sie diese Einbau-Anleitung gründlich durch bevor Sie mit der Montage anfangen. Garantie wird nur gewährt wenn der Anbau von einem Mitsubishi Händler ausgeführt worden ist. Änderungen hinsichtlich Ausstattung, Konstruktion, Abbildungen und Text Vorbehalten.

**F** Lisez cette notice de montage soigneusement avant l'installation. Une garantie est seulement délivrée si l'installation a été exécuté par un commerçant de Mitsubishi. Sous réserve de modifications de projet, construction, illustrations et texte.

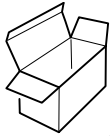
**NL** Lees deze montagehandleiding door alvorens U tot installatie overgaat. Garantie wordt alleen verleend indien de installatie is uitgevoerd door een erkende Mitsubishi handelaar. Veranderingen ten aanzien van ontwerp, constructie, afbeelding en tekst voorbehouden.

**E** Lea por tanto con atención este manual (folleto) ante de que la instalación comienza. Garantía es válida solamente si la instalación de este producto fue instalada por medio de una Mitsubishi distribuidora autorizada. Cambios en proyecto, construcción, retrato y texto son prohibidas.

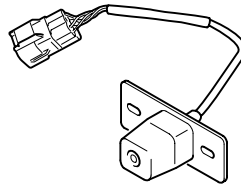
**S** Läs noggrant igenom denna monteringsanvisning innan du börjar Installations-arbetet. Garanlin gäller endast då installationen är utförd av en auktoriserad Mitsubishi-återförsäljare eller är fackmanmässigt utförd. Med reservation för modifieringar gällande design, konstruktion, illustrationer och text.



# Accessory

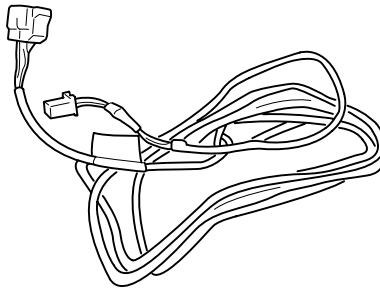


MZ313955



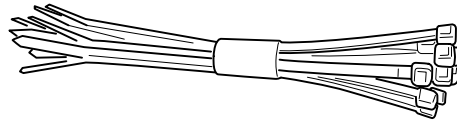
1

8781A015



2

MME31643



15x 3



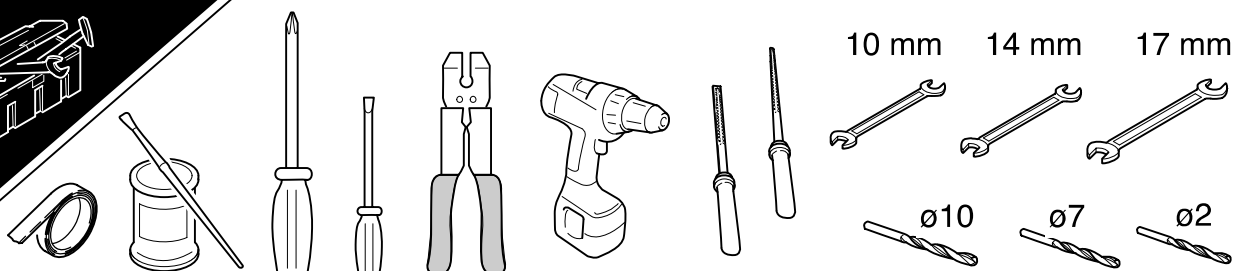
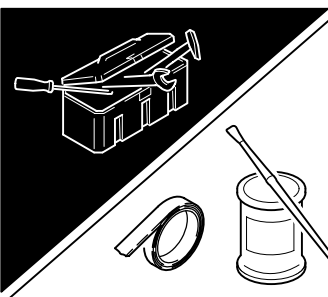
2x 4

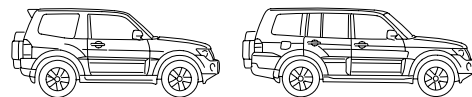
MU462017



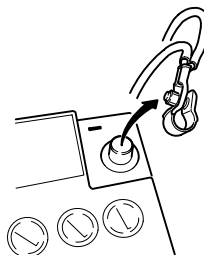
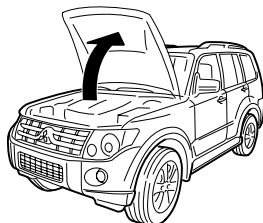
2x 5

MS480003

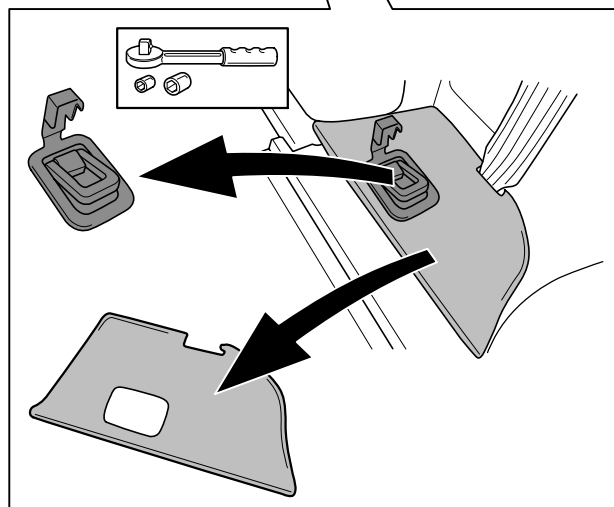
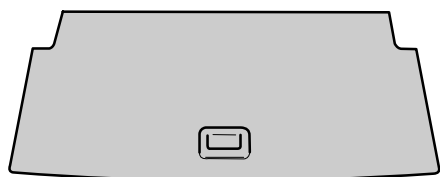
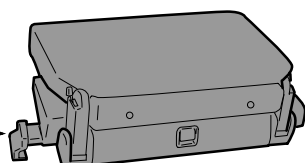
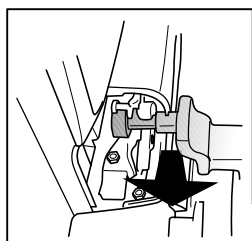
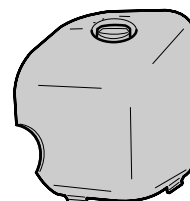
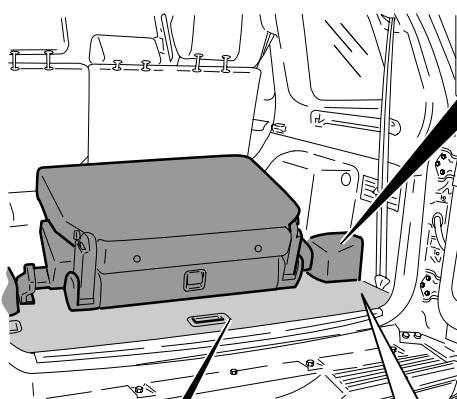
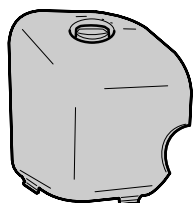


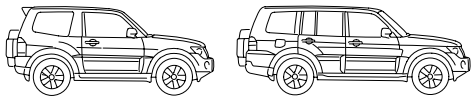


1



2

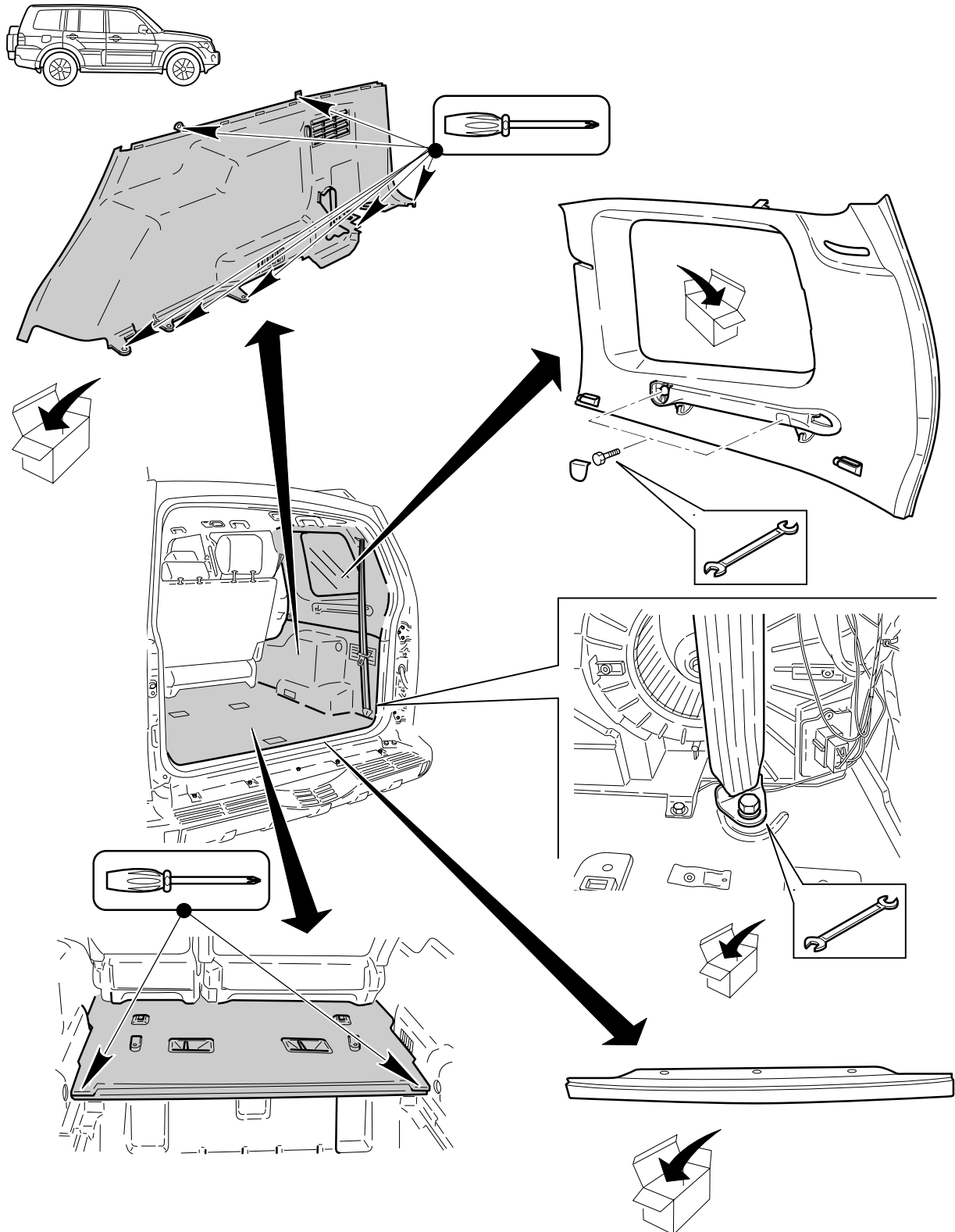


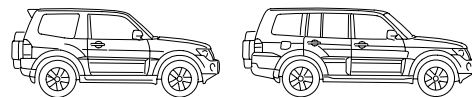


# Accessory

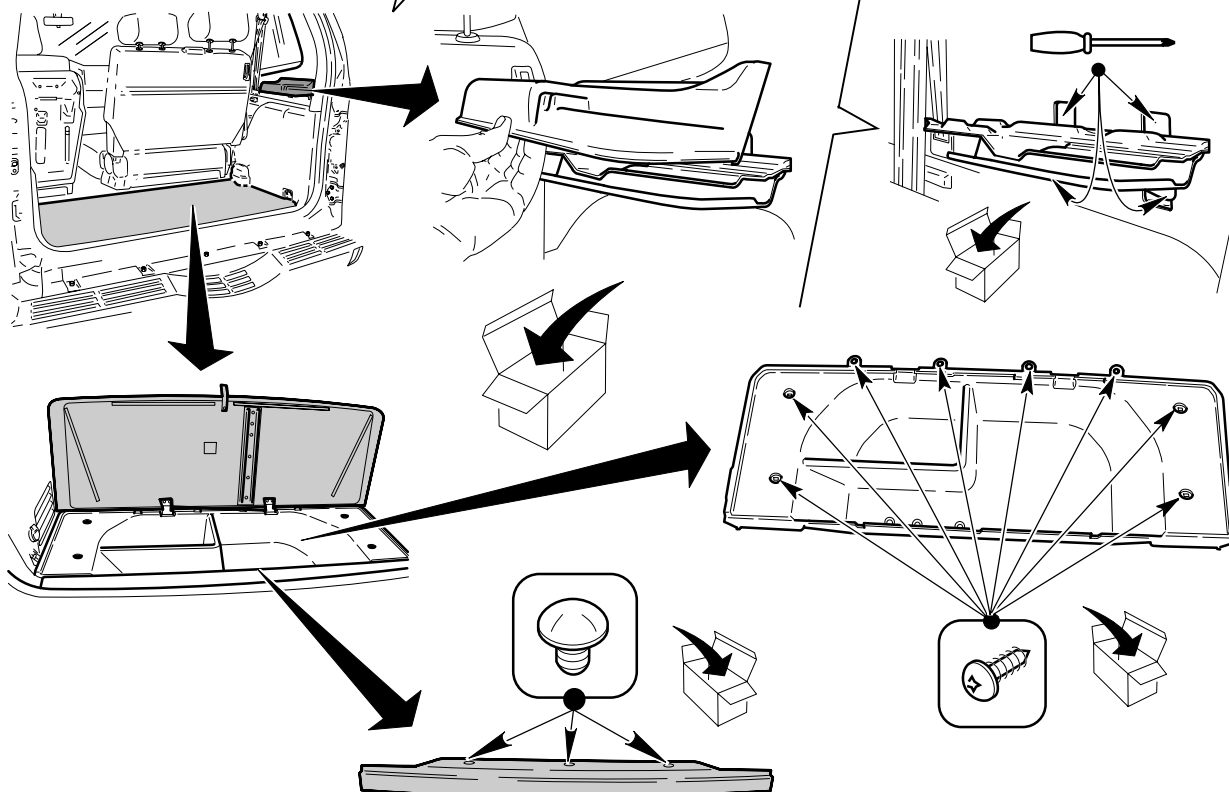
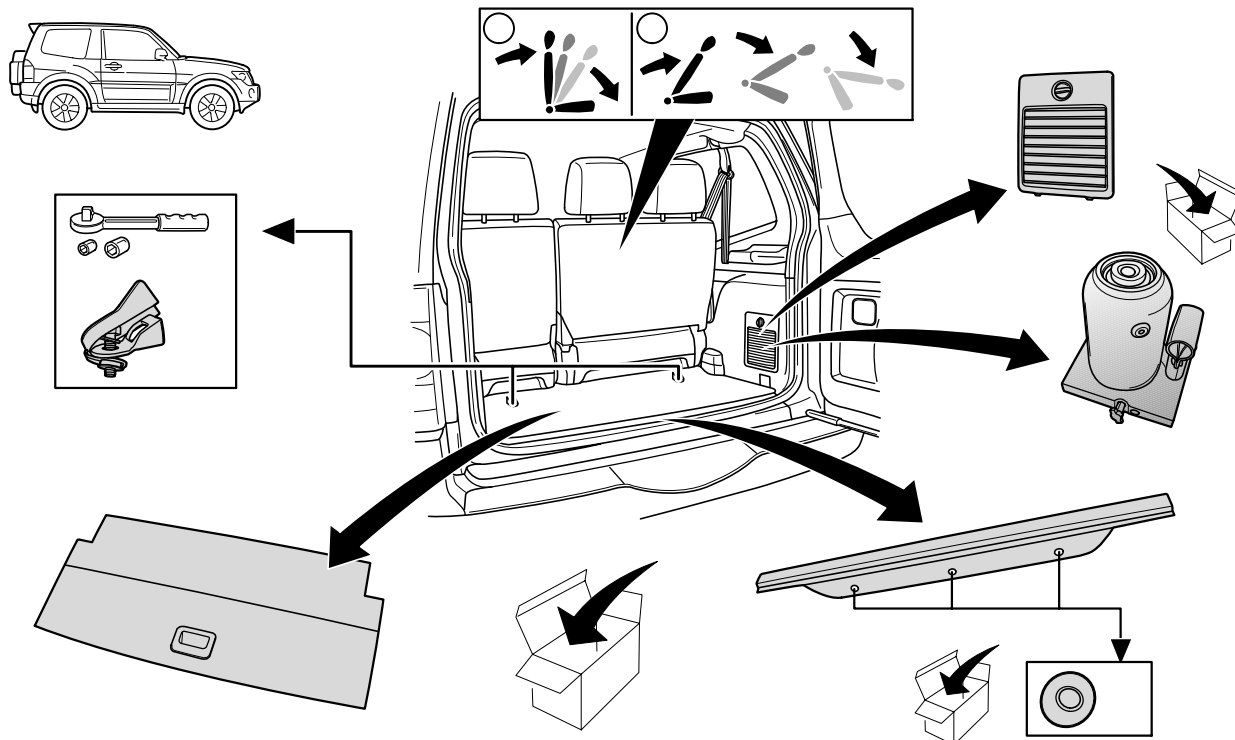


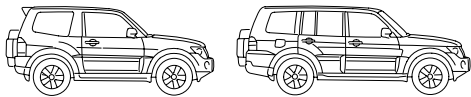
3





4

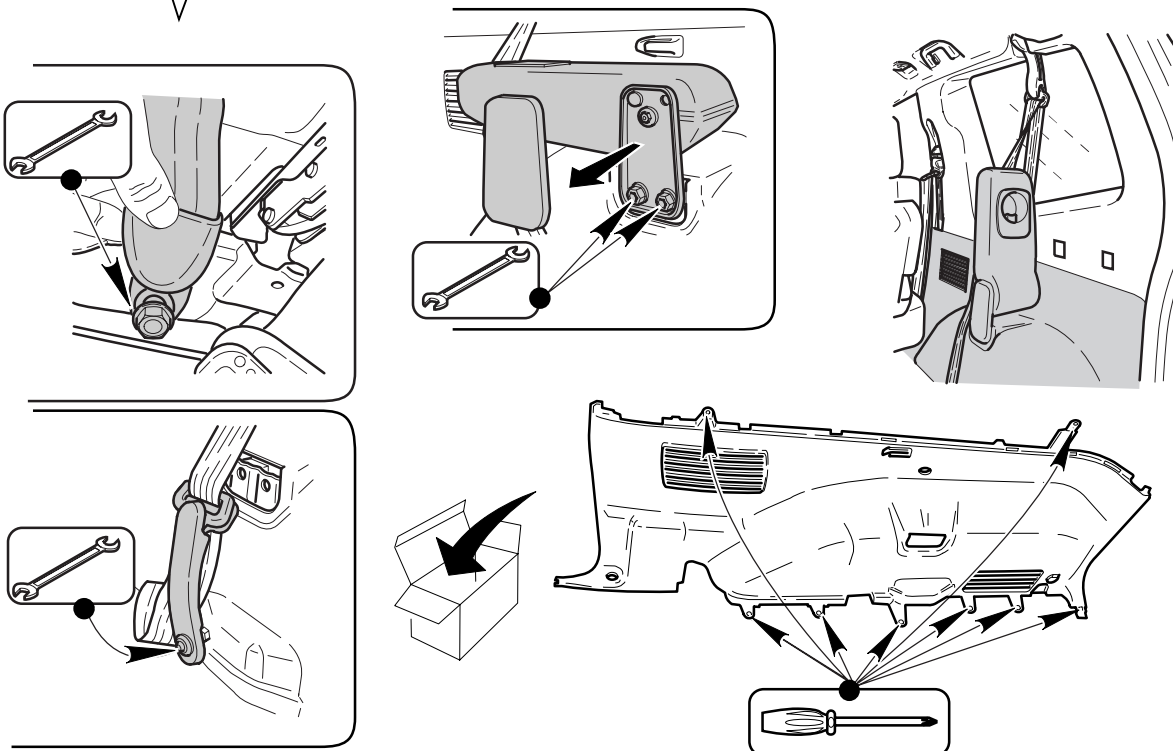
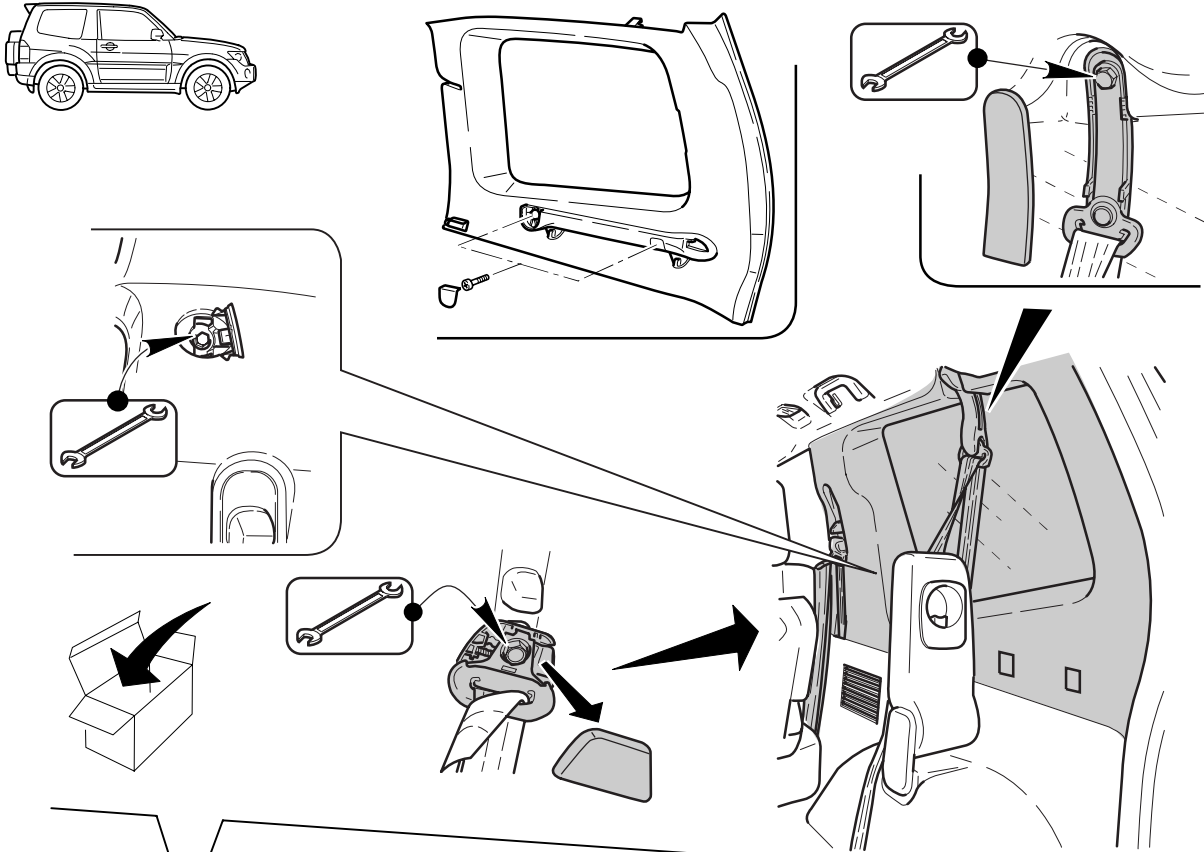




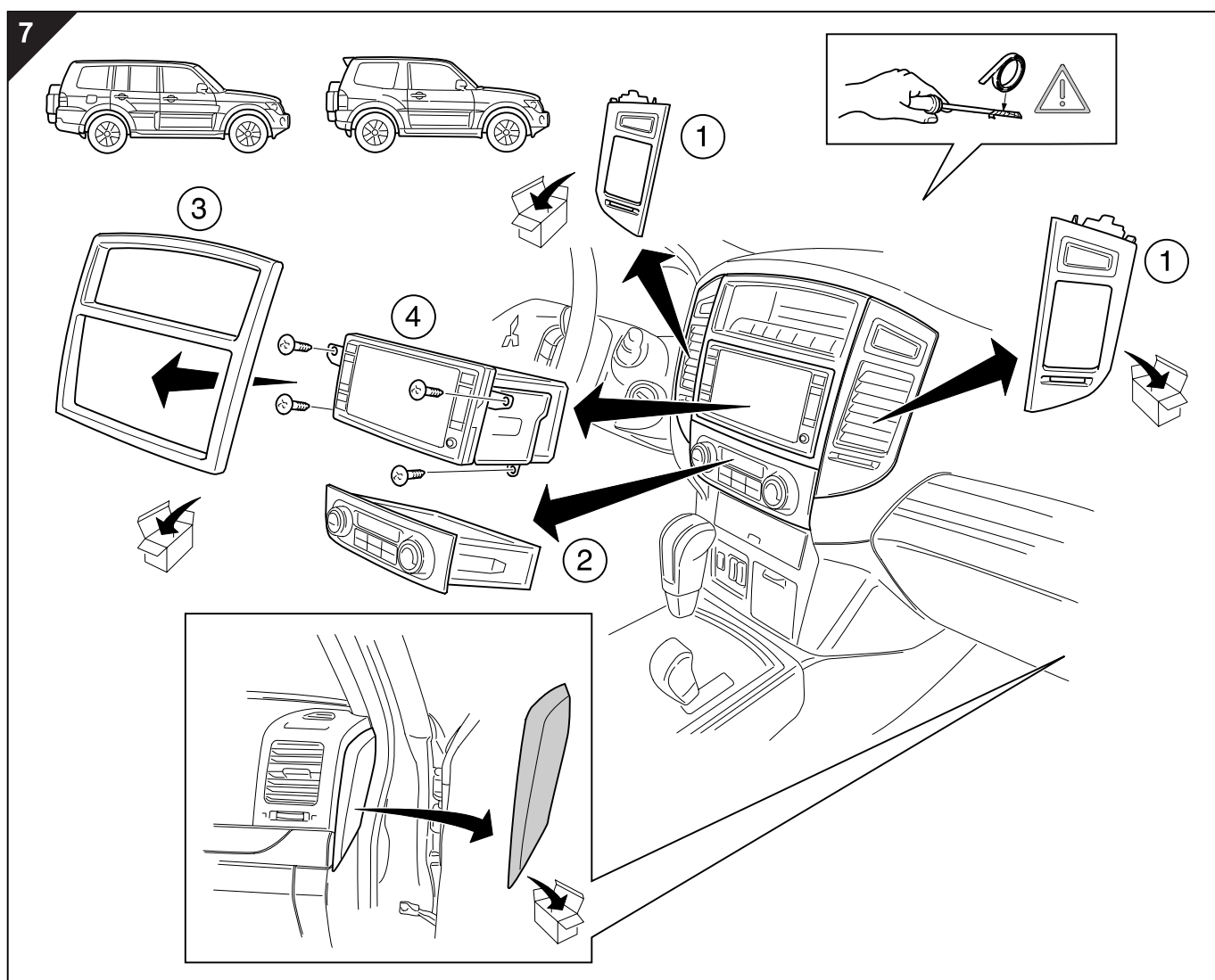
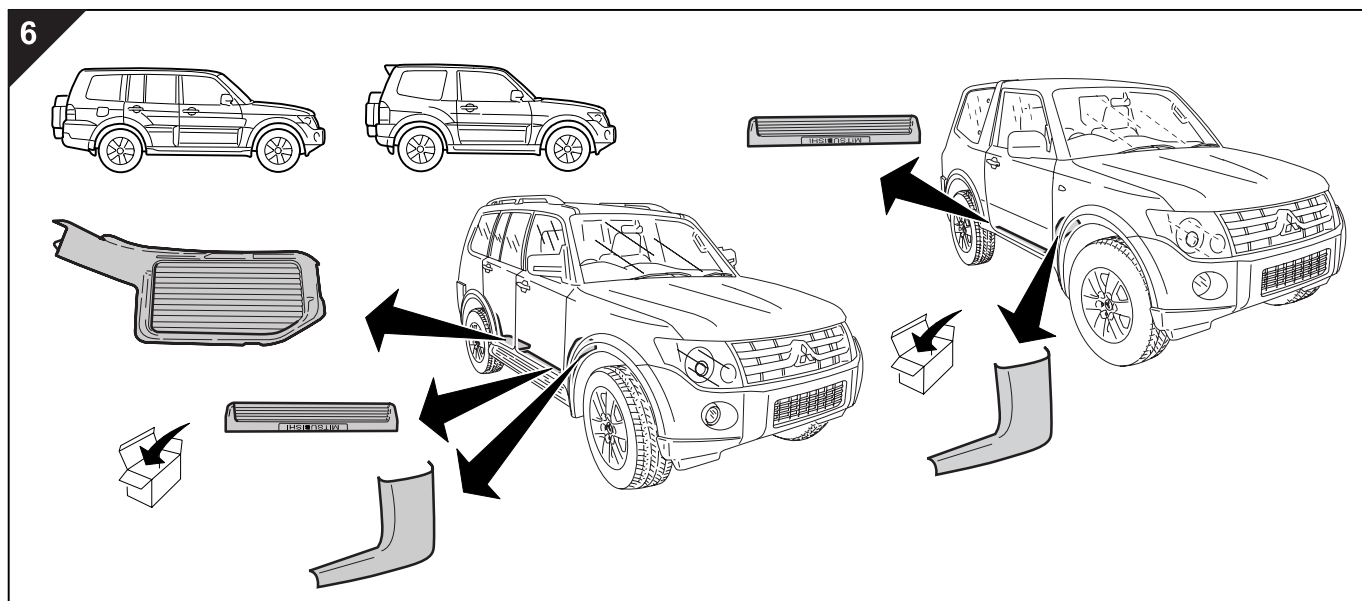
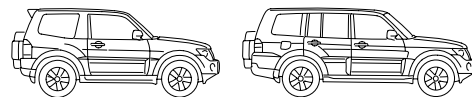
# Accessory

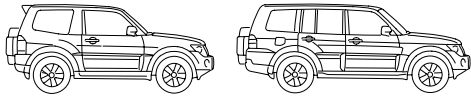


5





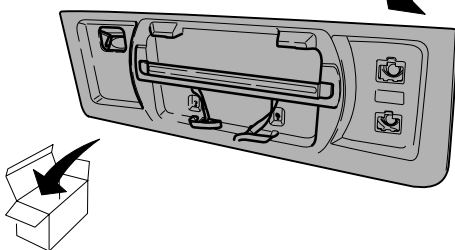
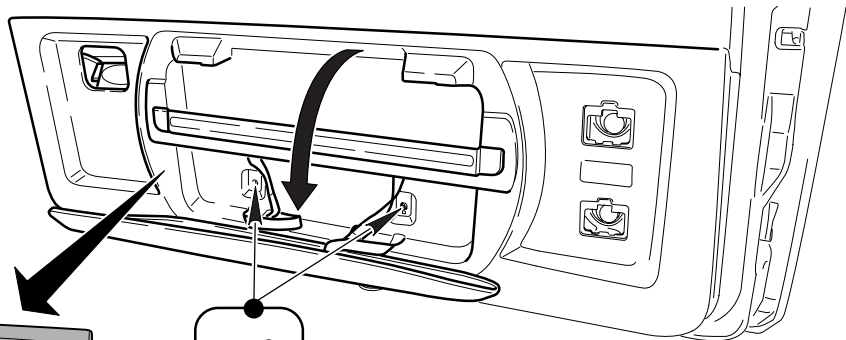
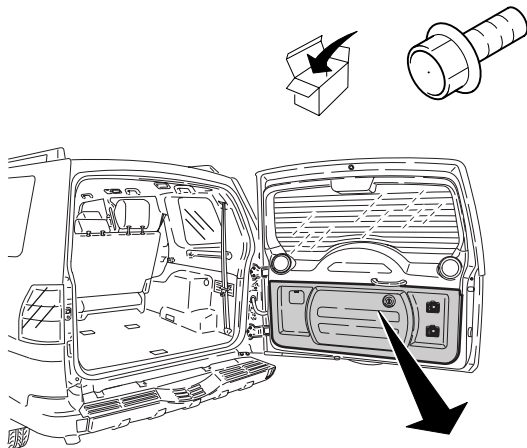
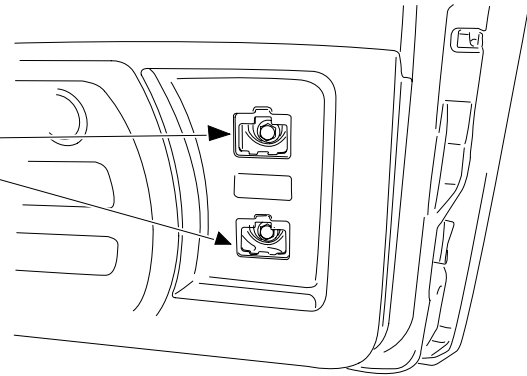
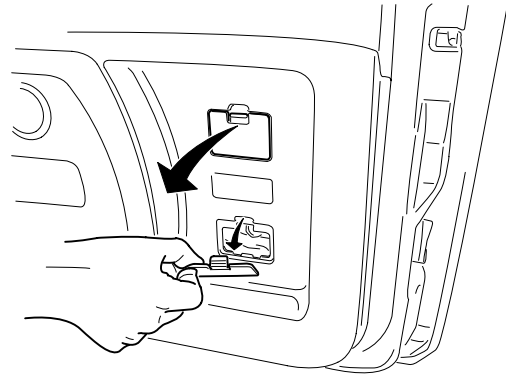
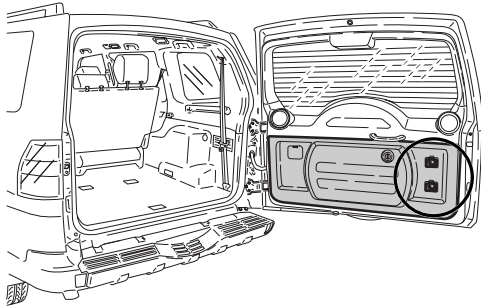
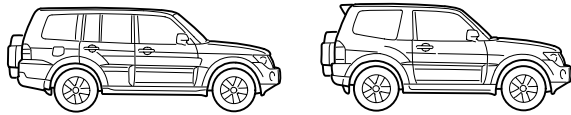




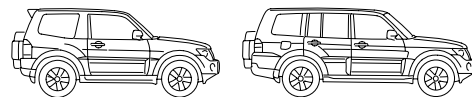
## Accessory



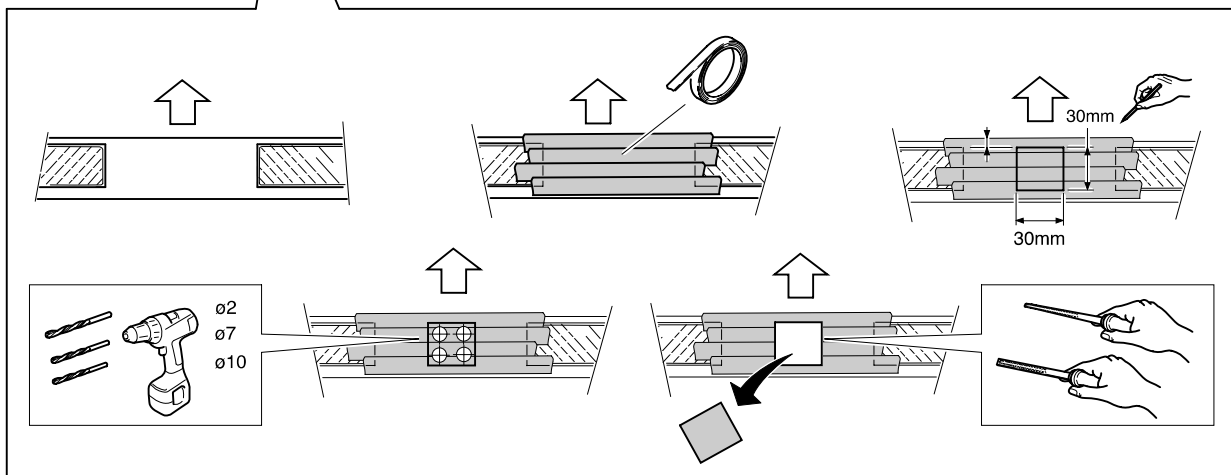
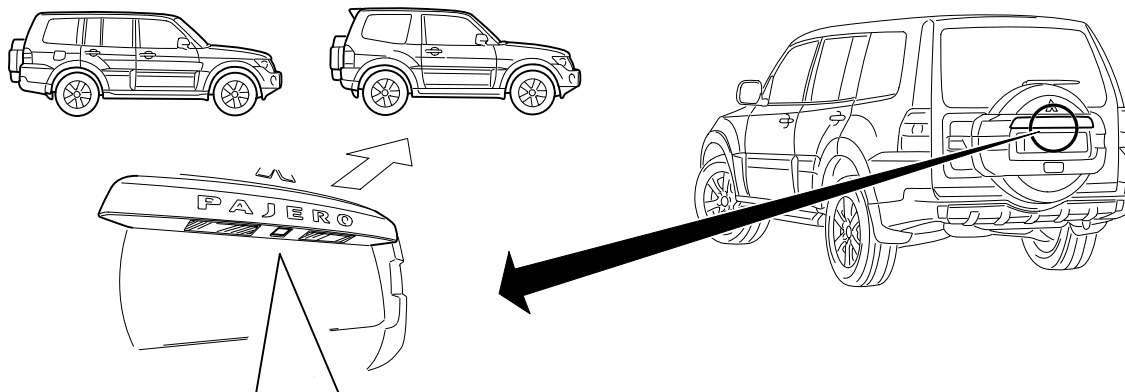
8



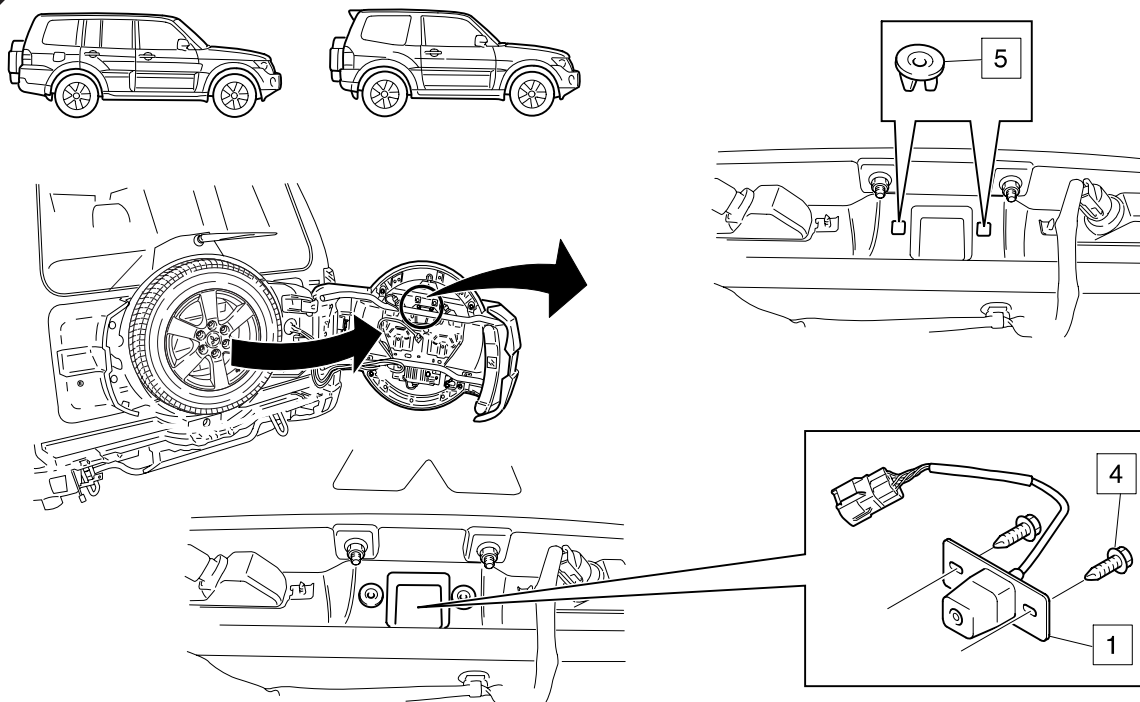


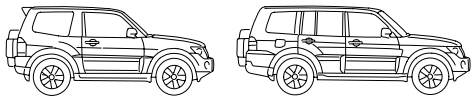


9



10

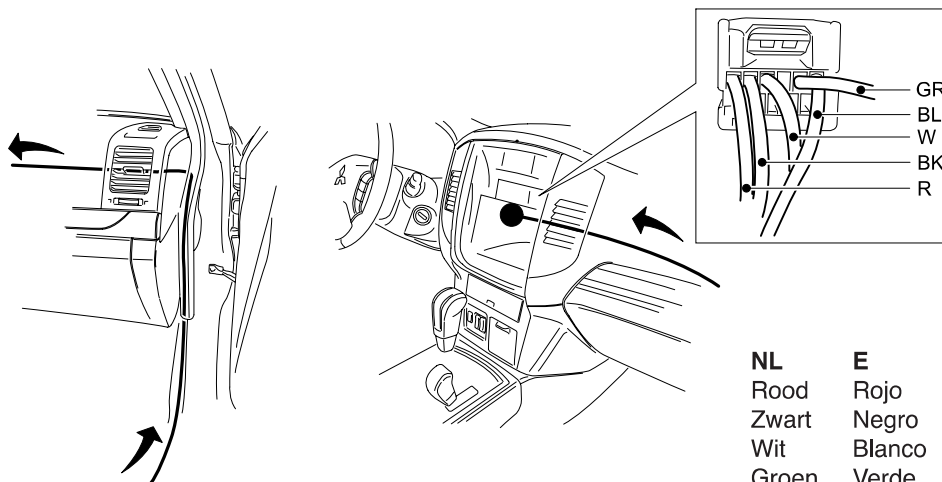
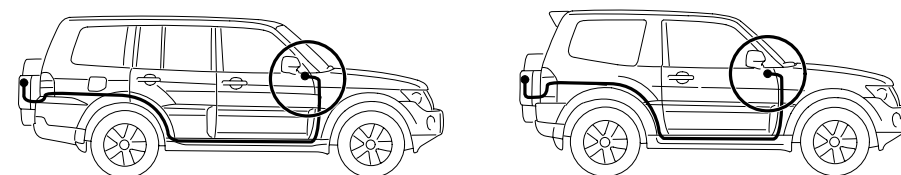
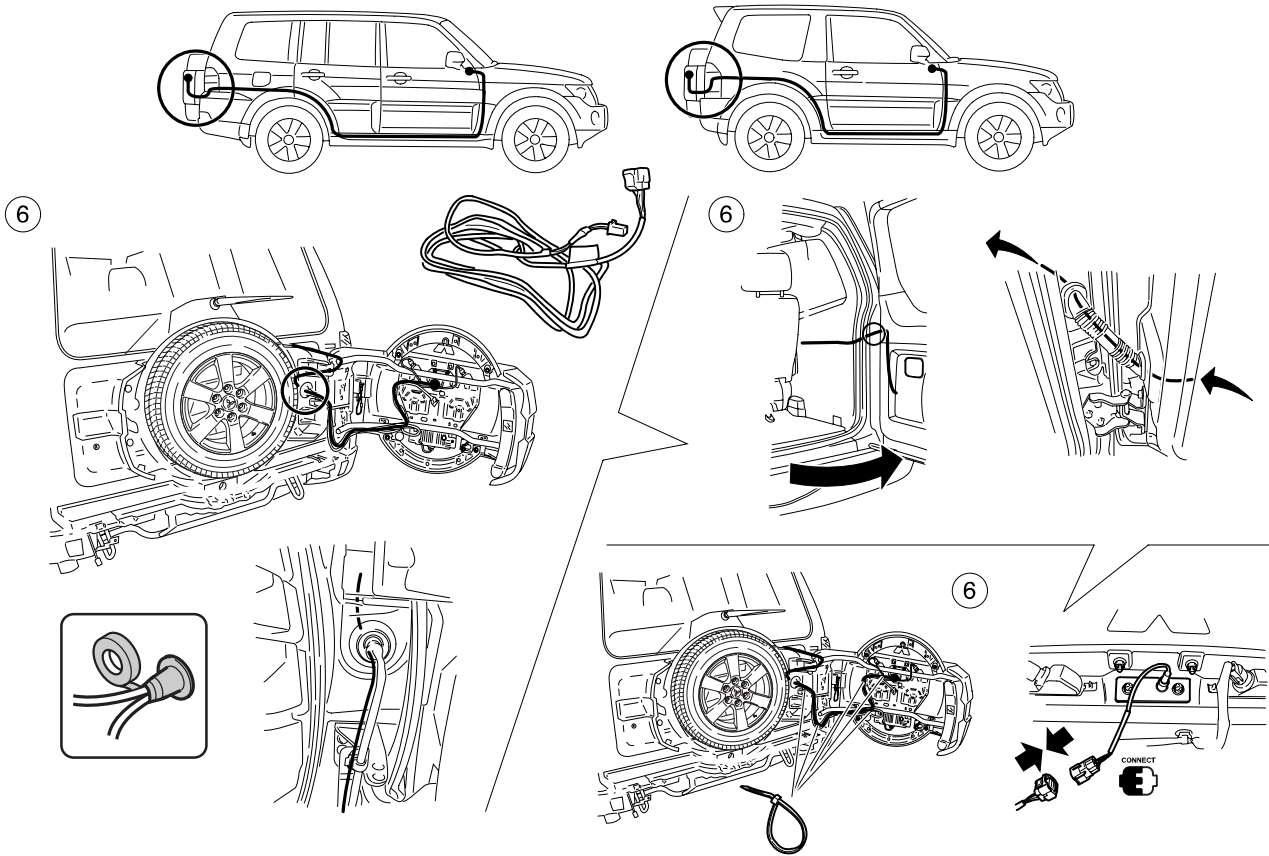




# Accessory

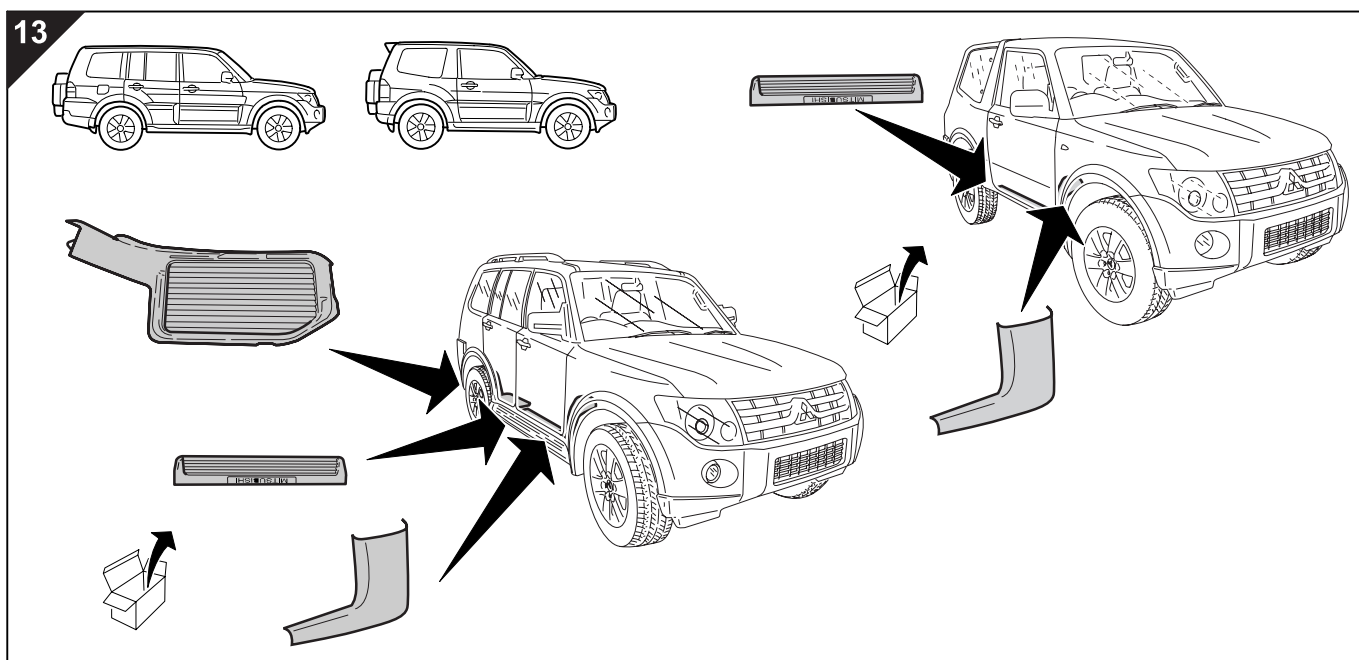
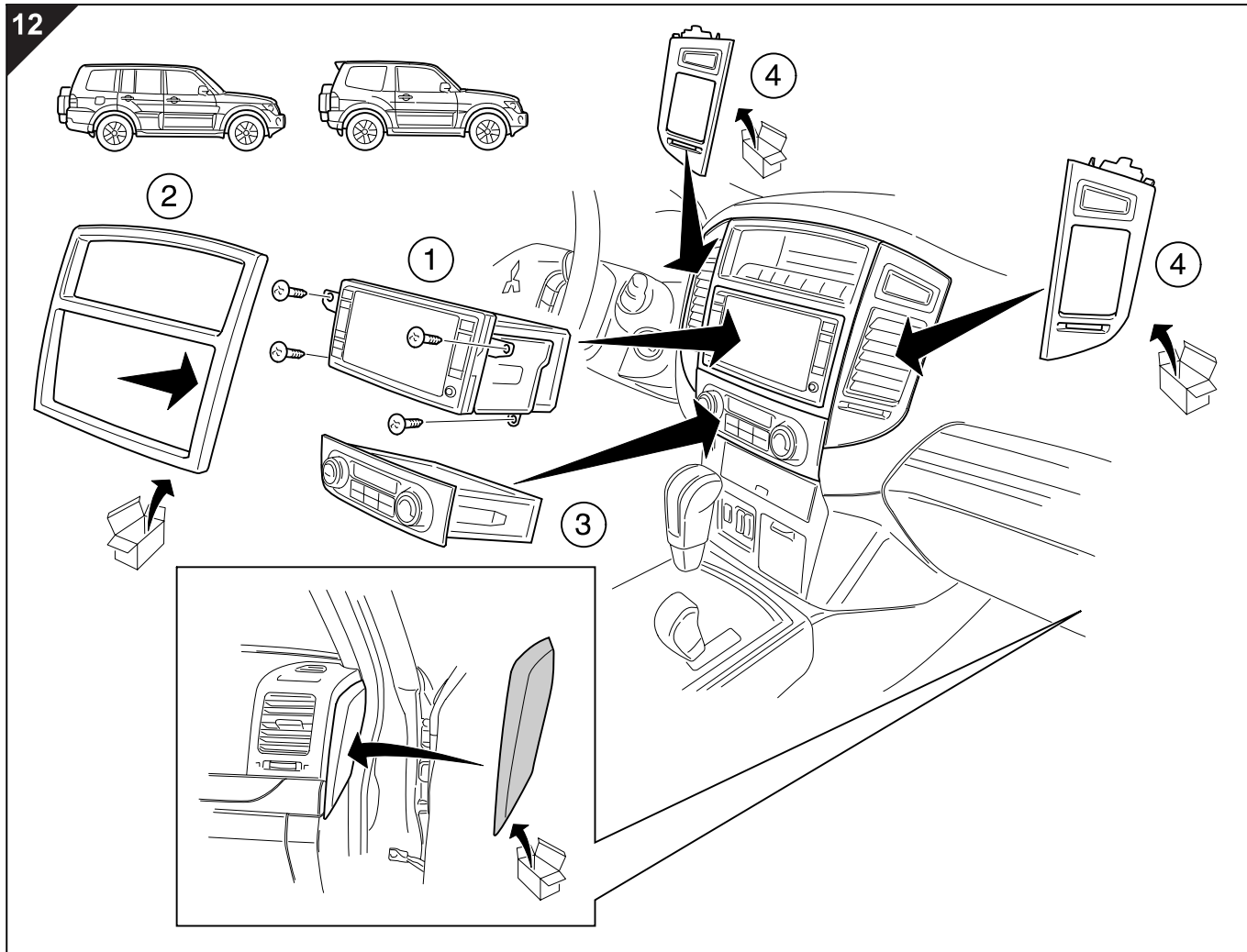
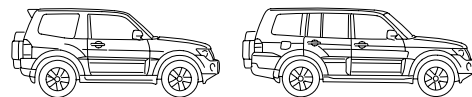


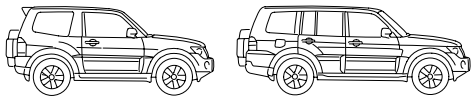
11



<b>NL</b> Rood Zwart Wit Groen Blauw	<b>E</b> Rojo Negro Blanco Verde Azul	<b>P</b> Vermelho Preto Branco Verde Azul	<b>I</b> Rosso Nero Bianco Verde Blu	<b>RUS</b> красный черный белый ЗЕЛЕНый голубо
---	--	--	---	---

<b>GB</b> Red Black White Green Blue	<b>D</b> Rot Schwarz Weiß Grün Blau	<b>F</b> Rouge Noir Blanc Vert Bleu
---	--	--

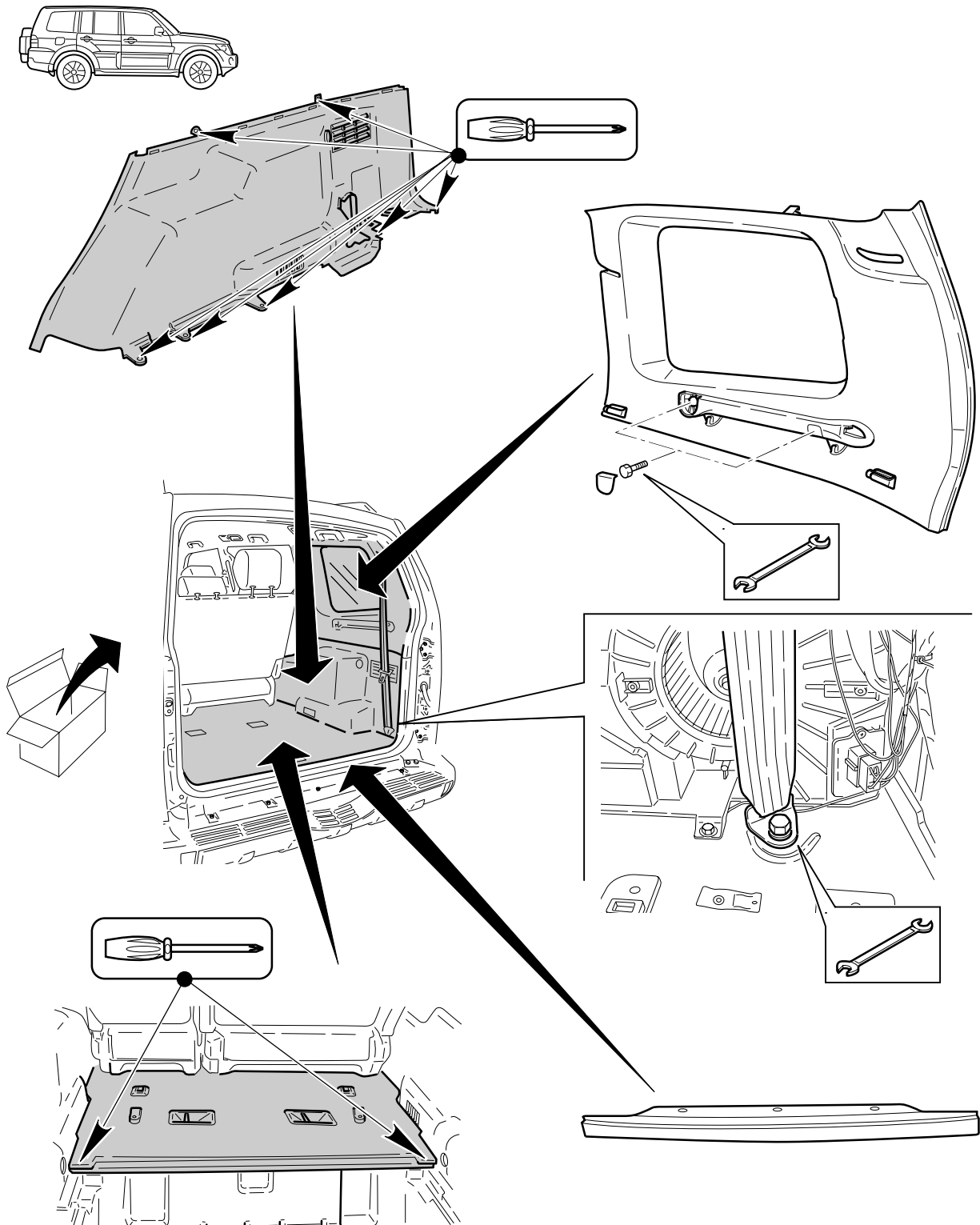


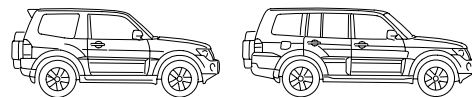


## Accessory

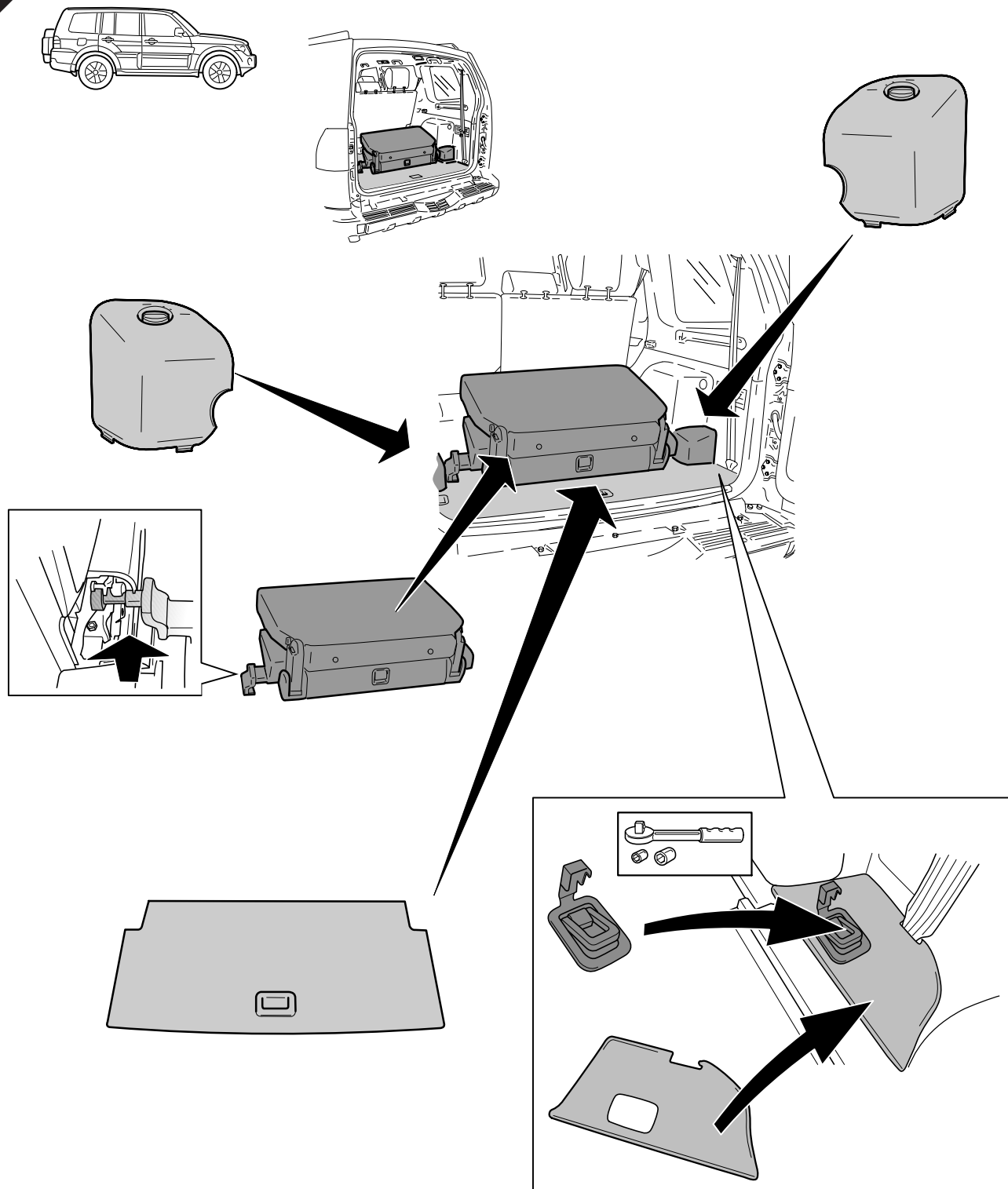


14





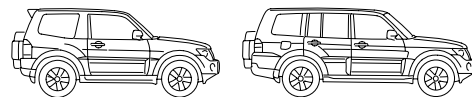
15





A line drawing showing a vehicle's rear frame. A rope is tied to a metal loop on the frame using a bow tie knot. A hand is shown holding the free end of the rope. The vehicle has a spare tire mounted on the side and a license plate area.





17

