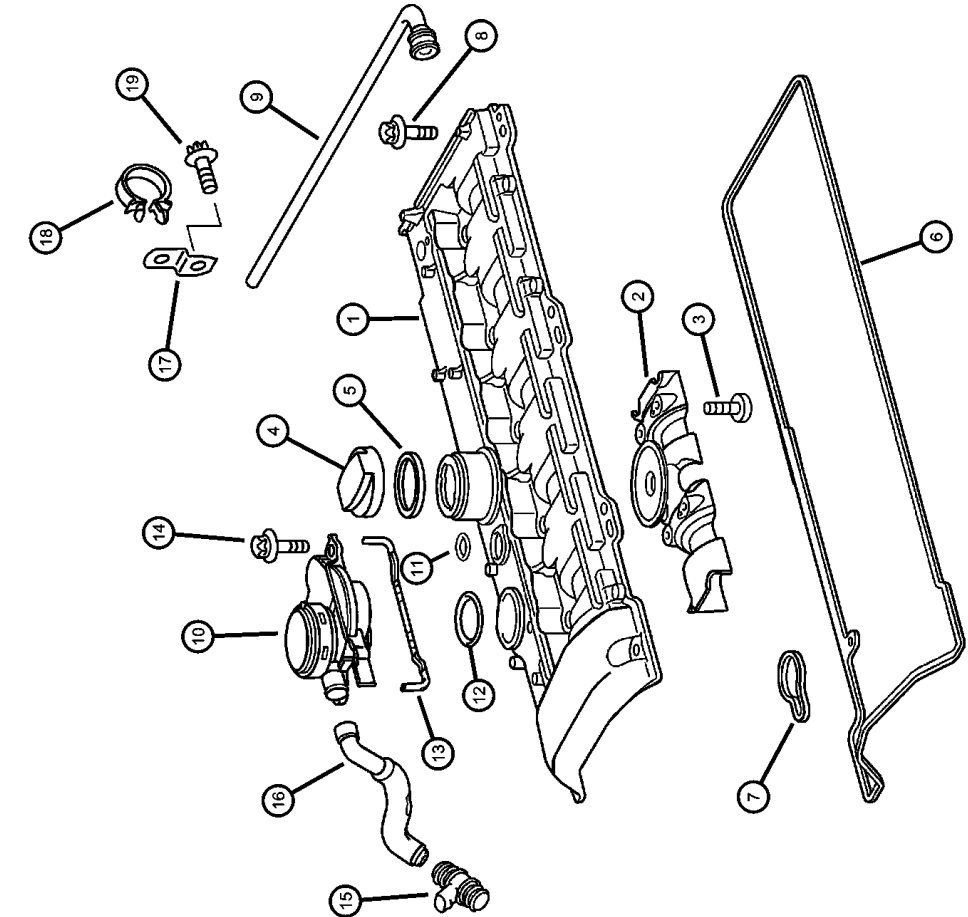


Cover, Cylinder Head
Figure 2.7LD-220



NOTE:
Sales Codes:
[DG0]=All Automatic Transmissions
[EN0]=All Turbo Diesel Engines

ITEM	PART NUMBER	QTY	LINE	SERIES	BODY	ENGINE	TRANS	TRIM	DESCRIPTION
1	05080028AA	1				EN0	DG0		COVER, Cylinder Head
2	05080082AA	1				EN0	DG0		PLATE
3	05073704AA	4				EN0	DG0		SCREW
4	05080172AA	1				EN0	DG0		CAP, Oil Filler
5	05080088AA	1				EN0	DG0		GASKET, Oil Filler Cap
6	05080084AA	1				EN0	DG0		GASKET, Cylinder Head, Valve Cover
7	05080083AA	5				EN0	DG0		GASKET, Nozzle holder
8	05073706AA	8				EN0	DG0		SCREW
9	05080089AA	1				EN0	DG0		HOSE
10	05080116AA	1				EN0	DG0		SEPERATOR, Oil
11	05080112AA	1				EN0	DG0		O RING, Oil separator to cylinder cover, Small
12	05080114AA	1				EN0	DG0		O RING, Oil separator to cylinder cover, Large
13	05080117AA	1				EN0	DG0		GASKET, Oil separator to cylinder cover
14	05073709AA	4				EN0	DG0		SCREW, SCREW, Oil separator to valve cover
15	05080183AA	1				EN0	DG0		TUBE, Crankcase Vent Valve
16	05080468AA	1				EN0	DG0		HOSE, Air Induction
17	05080090AA	1				EN0	DG0		BRACKET
18	05080091AB	1				EN0	DG0		CLAMP
19	05073824AA	2				EN0	DG0		SCREW

GRAND CHEROKEE (EUROPE) (WG)
SERIES
H = Laredo
P = Limited
S = Overland
LINE
J = JEEP - 4WD
U = JEEP - 4WD (RHD)

BODY
74 = SPORT UTILITY 4-DR
ENGINE
ENF = Engine - 2.7L 5Cyl 20V
T/Diesel DI
ERH = Engine - 4.0L Power
Tech I-6
EVA = Engine- 4.7L V8 MPI
EVC = Engine - 4.7L HO V8
MPI
TRANSMISSION
DGJ = Transmission-5-Spd.
Automatic, W5A580
DGK = Transmission - 4-Spd.
Automatic, 42RE
DQG = Transmission-5-Spd Automatic
5-45RFE

AR = use ase required - = Non illustrated part