

GROUP 32

POWER PLANT
MOUNT

CONTENTS

GENERAL DESCRIPTION.....	32-2	FRONT DIFFERENTIAL MOUNTING.....	32-7
ENGINE MOUNTING.....	32-4	REMOVAL AND INSTALLATION.....	32-7
REMOVAL AND INSTALLATION.....	32-4	INSPECTION.....	32-8
INSPECTION.....	32-5	CROSSMEMBER.....	32-8
TRANSMISSION MOUNTING.....	32-6	REMOVAL AND INSTALLATION.....	32-8
REMOVAL AND INSTALLATION.....	32-6	INSPECTION.....	32-9
INSPECTION.....	32-7	SPECIFICATIONS.....	32-9
		FASTENER TIGHTENING SPECIFICATIONS.....	32-9

GENERAL DESCRIPTION

M1321000100210

RWD

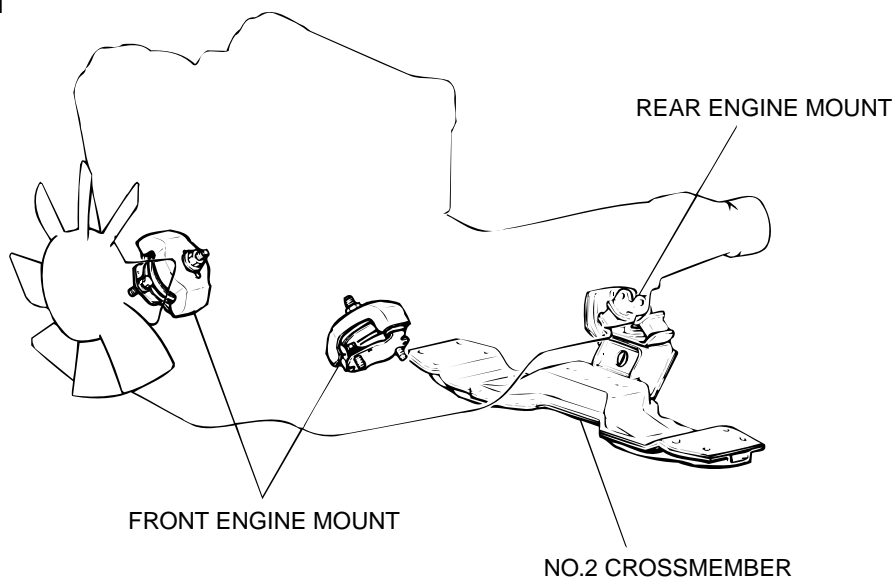
The engine and transmission assembly is supported at three points, where insulators are used. (Two points for the engine, one point for the transmission.) The number 2 crossmember is bolted to the frame and supports the transmission.

4WD

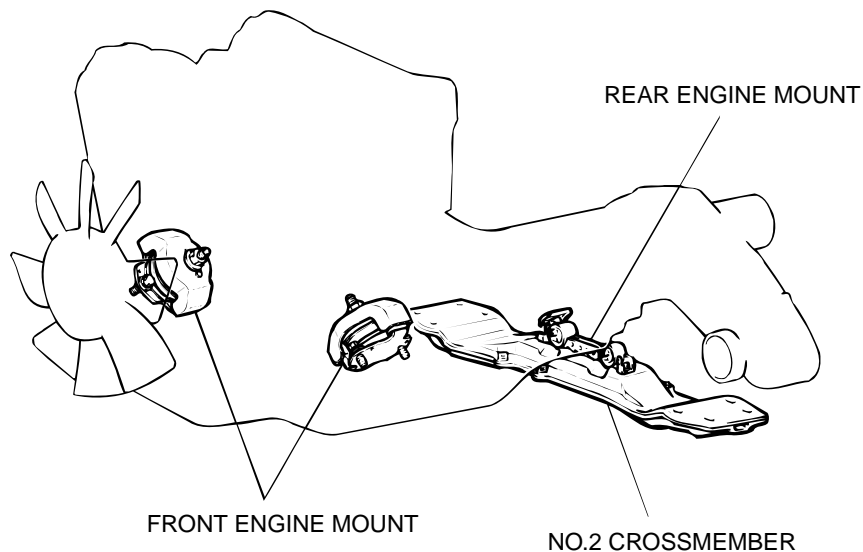
The engine and transmission assembly is supported at four points, where insulators are used. (Two points for the engine, two points for the transmission) The differential assembly is supported at three points, where mounting brackets and mounting rubber pieces are used. The front suspension crossmember is bolted to the frame and supports the front differential. The number 2 crossmember is bolted to the frame and supports the transmission and transfer.

CONSTRUCTION DIAGRAM

ENGINE MOUNT
<RWD>

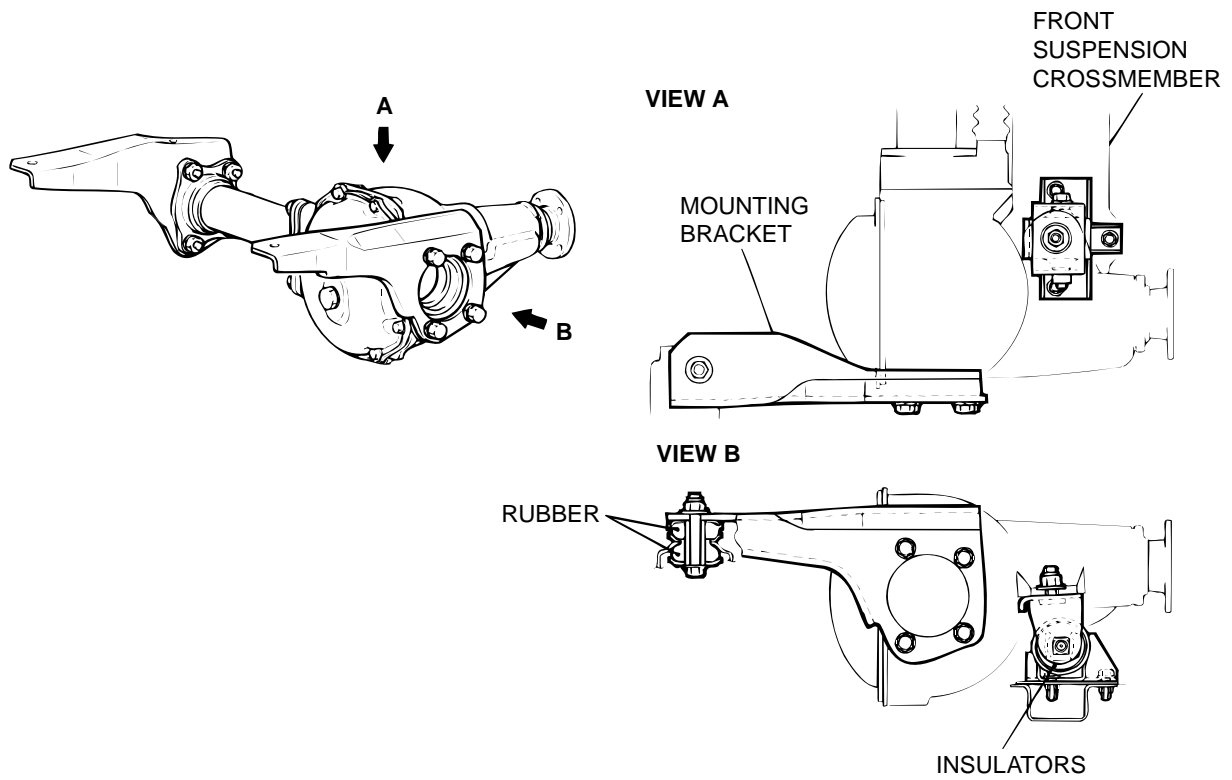


<4WD>



AC004539 AB

FRONT DIFFERENTIAL MOUNT



AC004540 AB

ENGINE MOUNTING

REMOVAL AND INSTALLATION

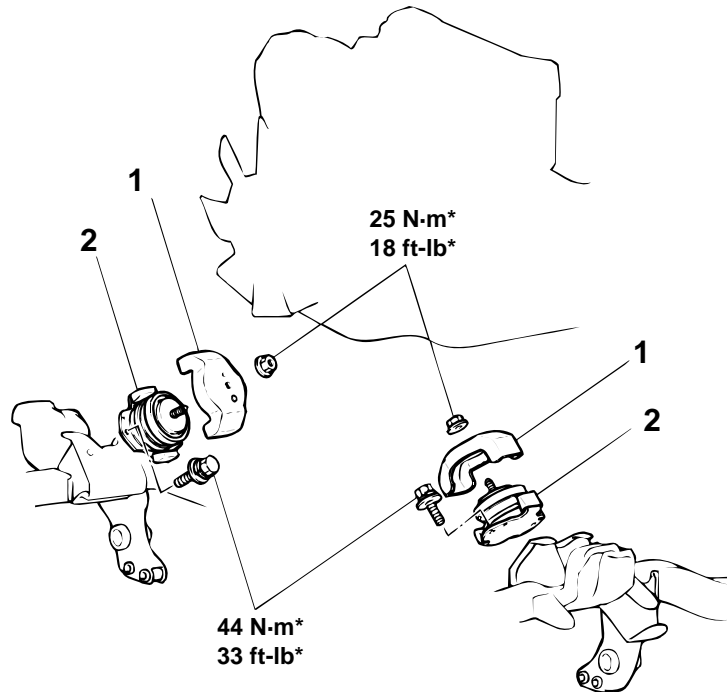
M1321001100246

CAUTION

*: Indicates parts which should be initially tightened, and then fully tightened after placing the vehicle horizontally and loading the full weight of the engine on the vehicle body.

Pre-removal and Post-installation Operation

- Air Cleaner Assembly Removal and Installation (Refer to GROUP 15, Air Cleaner [P.15-4.](#))
- Under Skid Plate and Under Cover Removal and Installation (Refer to GROUP 42, Under Cover [P.42-164.](#))



AC004541 AB

REMOVAL STEPS

- ENGINE ASSEMBLY REMOVAL (REFER TO GROUP 11A, ENGINE ASSEMBLY [P.11A-12](#), OR GROUP 11C, ENGINE ASSEMBLY [P.11C-12.](#))

REMOVAL STEPS (Continued)

- >>A<<
1. ENGINE MOUNT STOPPER
 2. ENGINE MOUNT INSULATOR

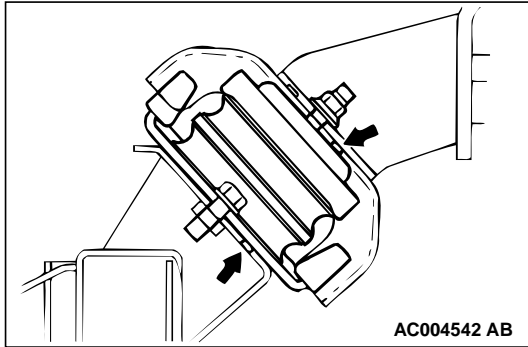
INSTALLATION SERVICE POINT

>>A<< ENGINE MOUNT INSULATOR INSTALLATION

CAUTION

Do not distort rubber portions, and never stain rubber portions with fuel or oil.

Make sure that the locating boss and hole are in alignment.



INSPECTION

M1321001200146

- Check the insulators for cracks, separation or deformation.
- Check the front insulator stoppers for deformation.

TRANSMISSION MOUNTING

REMOVAL AND INSTALLATION

M1321001400247

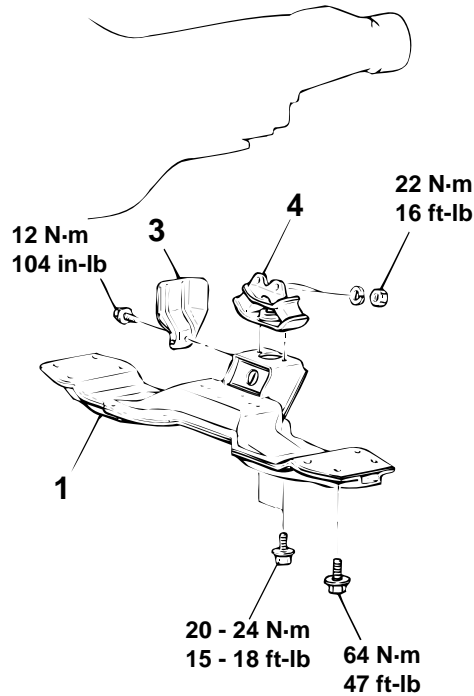
CAUTION

*: Indicates parts which should be initially tightened, and then fully tightened after placing the vehicle horizontally and loading the full weight of the engine on the vehicle body.

Pre-removal and Post-installation Operation

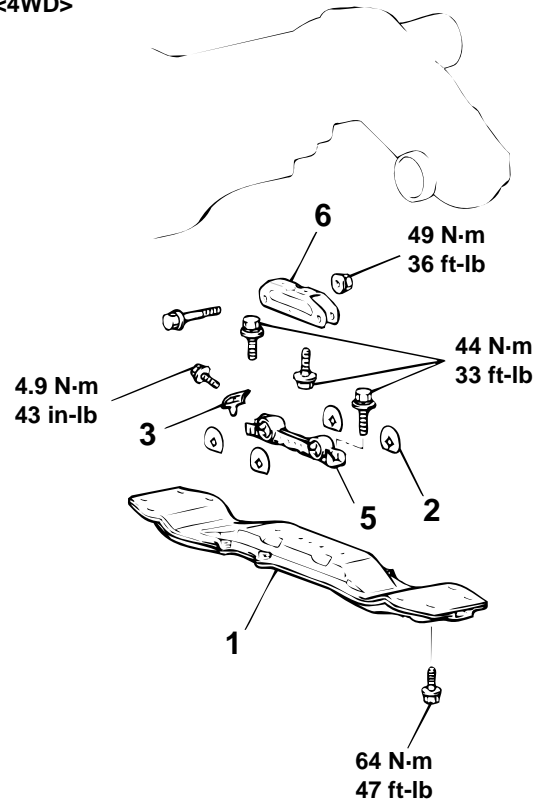
- Transfer Case Protector Removal and Installation (Refer to GROUP 42, Under Cover [P.42-164.](#))

<RWD>

**REMOVAL STEPS <RWD>**

- HOLD THE TRANSMISSION WITH A TRANSMISSION JACK.
- 1. NO.2 CROSSMEMBER
- 3. HEAT PROTECTOR
- 4. REAR ENGINE SUPPORT INSULATOR

<4WD>

**REMOVAL STEPS <4WD>**

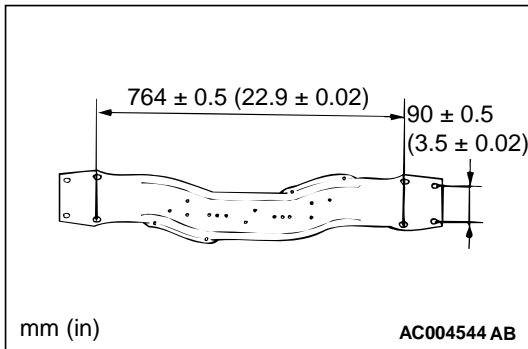
- HOLD THE TRANSMISSION WITH A TRANSMISSION JACK.
- 1. NO.2 CROSSMEMBER
- 2. STOPPER
- 3. HEAT PROTECTOR
- 5. TRANSMISSION MOUNTING INSULATOR
- 6. TRANSMISSION MOUNTING BRACKET

AC004543 AB

INSPECTION

M1321001500084

- Check the insulators for cracks, separation or deformation.
- Check the number 2 crossmember for deformation or corrosion.



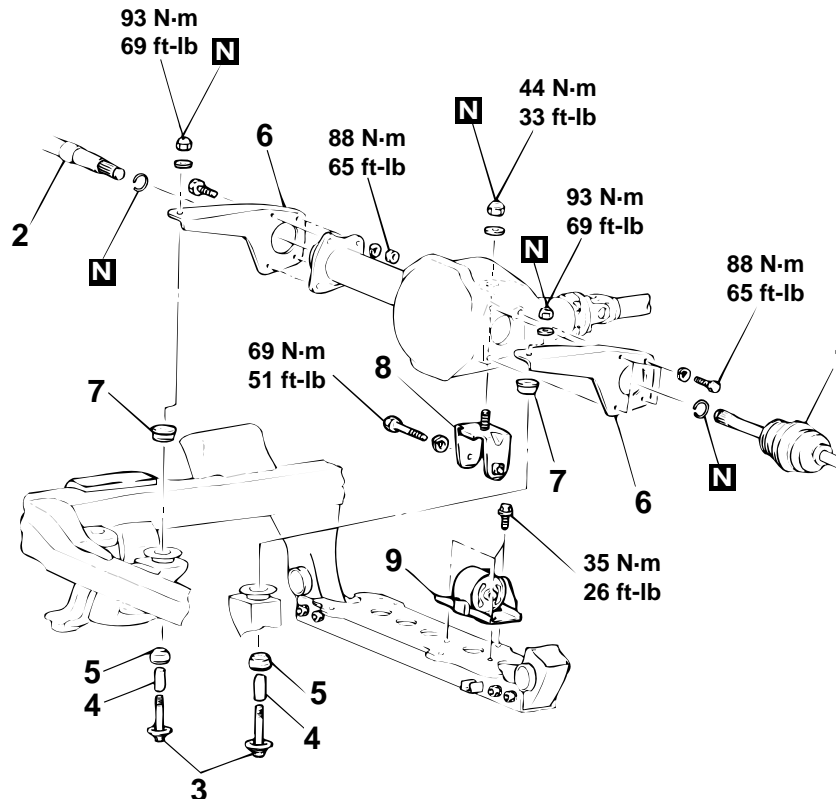
FRONT DIFFERENTIAL MOUNTING

REMOVAL AND INSTALLATION

M1321001700055

Pre-removal and Post-installation Operation

- Under Skid Plate and Under Cover Removal and Installation (Refer to GROUP 42, Under Cover [P.42-164.](#))



AC004545 AB

REMOVAL STEPS

- HOLD THE FRONT DIFFERENTIAL WITH A TRANSMISSION JACK.
- 1. DRIVE SHAFT (REFER TO GROUP 26, DRIVE SHAFT [P.26-22.](#))

REMOVAL STEPS (Continued)

- 2. INNER SHAFT (REFER TO GROUP 26, INNER SHAFT [P.26-32.](#))
- 3. PIN
- 4. SPACER
- 5. DIFFERENTIAL MOUNTING RUBBER B

REMOVAL STEPS (Continued)

6. DIFFERENTIAL MOUNTING
BRACKET
7. DIFFERENTIAL MOUNTING
RUBBER A
8. DIFFERENTIAL SUPPORT
BRACKET
9. DIFFERENTIAL MOUNTING
BRACKET

INSPECTION

M1321001800052

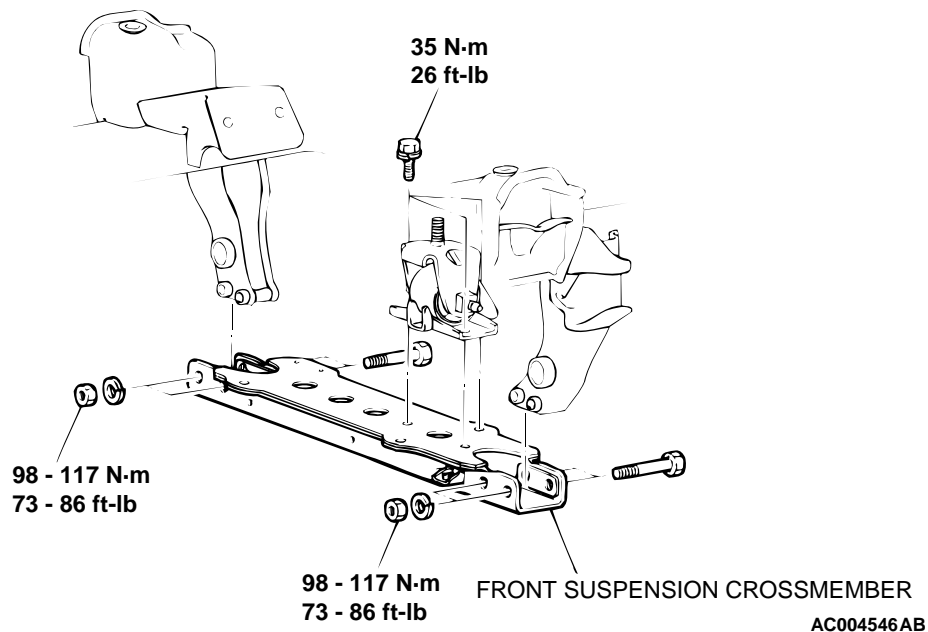
- Check the differential mounting brackets for deformation and damage.
- Check the differential support bracket for deformation and damage.
- Check the insulators for cracks, separation or deformation.
- Check the differential mounting rubber for cracks and damage.

CROSSMEMBER**REMOVAL AND INSTALLATION**

M1321003200216

Pre-removal and Post-installation Operation

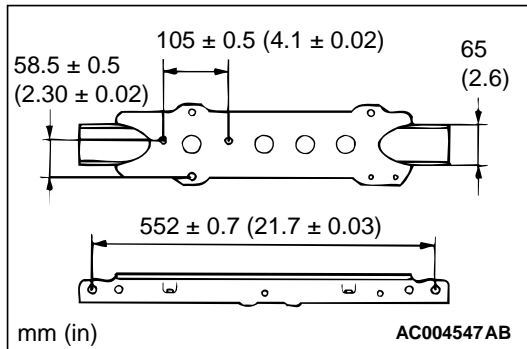
- Under Cover Removal and Installation (Refer to GROUP 42, Under Cover [P.42-164.](#))



INSPECTION

M1321003300105

- Check the crossmembers for cracks or damage.
- Check that the crossmembers measure as illustrated.



SPECIFICATIONS

FASTENER TIGHTENING SPECIFICATIONS

M1321004100212

ITEM	SPECIFICATION
Differential mounting bracket self-locking nut	93 N·m (69 ft-lb)
Differential mounting bracket to front differential bolt	88 N·m (65 ft-lb)
Differential mounting bracket to front suspension crossmember bolt	35 N·m (26 ft-lb)
Differential support bracket bolt	69 N·m (51 ft-lb)
Engine mount insulator to engine nut	25 N·m (18 ft-lb)
Engine mount insulator to frame bolt	44 N·m (33 ft-lb)
Front differential nut	88 N·m (65 ft-lb)
Front differential self-locking nut	44 N·m (33 ft-lb)
Front suspension crossmember nut	98 – 117 N·m (73 – 86 ft-lb)
No.2 crossmember to frame bolt	64 N·m (47 ft-lb)
No.2 crossmember to rear engine support insulator bolt	20 – 24 N·m (15 – 18 ft-lb)
Rear engine mounting heat protector bolt	12 N·m (104 in-lb)
Rear engine support insulator to transmission nut	22 N·m (16 ft-lb)
Transmission mounting bracket to transmission bolt	44 N·m (33 ft-lb)
Transmission mounting bracket to transmission mounting insulator nut	49 N·m (36 ft-lb)
Transmission mounting heat protector	4.9 N·m (43 in-lb)
Transmission mounting insulator bolt	44 N·m (33 ft-lb)

NOTES